

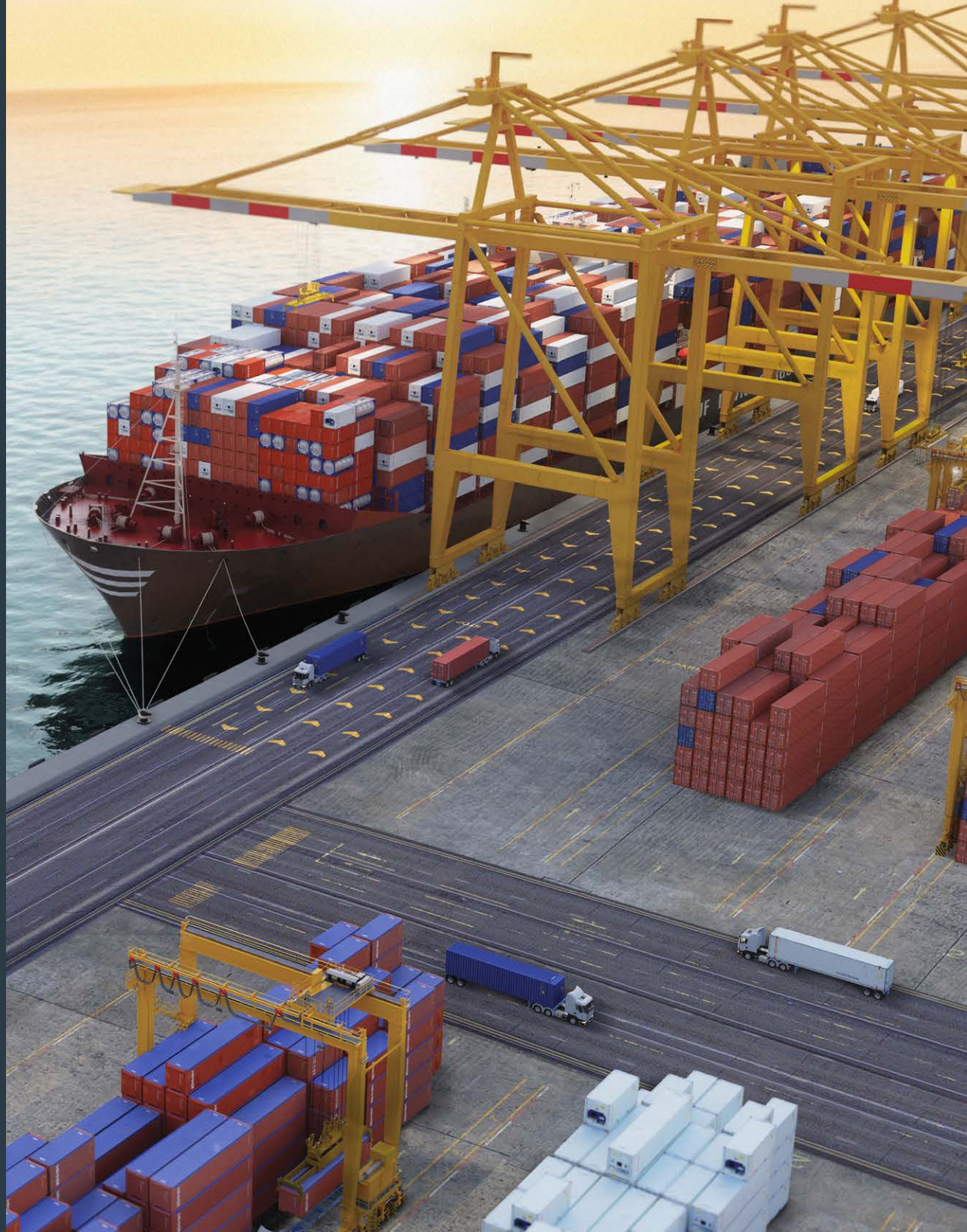


TRITON

OUR SECTORS

Shipping

Our vast range of products and services have been supporting the shipping sector for many years.



OUR SECTORS – SHIPPING

The go-to supplier of the global shipping industry

With an active container fleet of more than 7 million TEU, we are the container leasing company of choice to many of the world's major cargo shipping lines.

Through our extensive range of products and services, combined with our vast global network, we can offer our shipping industry customers multiple solutions for shipping and transporting products around the world. At Triton, we provide high-quality containers that undergo rigorous testing to meet all ISO standards.

Supporting the shipping sector for over 50 years

We are the number one supplier to seven of the top ten global shipping lines, and in 2021, we supplied all top ten shipping lines with new or used containers. In addition, we have provided 1.4 million new TEUs to top shipping lines since July 2020.

We also purchase and resell containers from our shipping line customers. Please get in touch with your local Triton representative for more information.

Shipping lines

Our ability to supply the right equipment at the right place and time ensures we are always there to meet the needs of the world's ocean carriers.

NVOCC/3PL/BCOs

Reliable access to shipper-owned (SOC) container supply for critical shipments.

Ocean terminals

Our extensive range of Chassis and Roll Trailers provides various solutions for moving equipment within even the busiest container terminals and cargo docks.

Short sea operators

We are committed to helping reduce road congestion and increasing sustainability.

MPV vessel operators

We provide our MPV customers with the capability to offer containers to their customer base for global projects.

PLEASE NOTE: The following pages showcase a small sample of products in the Triton global inventory. We stock a wide range of products for lease and sale in various conditions. Get in touch with your local Triton representative for more information.



CLASSIFICATION

Lease

Available via Triton's global network of supply locations.

40ft High Cube Dry Container



FEATURES

- Additional height provides extra internal cubic capacity, which means greater interior stacking capacity for your goods
- Manufactured with rust resistant corten steel
- Superior paint systems
- Resistant to damage and corrosion
- Secure and weatherproof, with vents to allow airflow
- Incredibly versatile
- Triton's industry leading new production testing and inspection criteria ensures the highest quality container
- Backed up by Triton's global network of supply locations and dedicated leasing and support teams
- Available globally
- IICL-6 repair criteria saves cost at off-hire
- Damage Protection Plan available to reduce costs and time at off-hire
- Flexible lease terms to meet your company needs



CONTAINER ROOF



CONTAINER FRONT

CONTAINER SIDE

CONTAINER REAR

DIMENSIONS (METRIC/IMPERIAL)

EXTERNAL DIMENSIONS

Length	12,192 mm	40' 0.0"
Width	2,438 mm	8' 0.0"
Height	2,896 mm	9' 6.0"

DOOR OPENING

Width	2,340 mm	7' 8.1"
Height	2,585 mm	8' 5.8"

INTERNAL DIMENSIONS

Length	12,032 mm	39' 5.7"
Width	2,352 mm	7' 8.6"
Height	2,698 mm	8' 10.2"

CAPACITY & WEIGHTS

Inside Cubic Capacity	76.4 m ³	2,700 ft ³
Max Gross	32,500 kg	71,650 lbs
Payload	28,800 kg	63,490 lbs
Tare	3,700 kg	8,160 lbs

NOTE: The dimensions and door openings of all containers correspond to ISO standards. However, due to production tolerances, a difference in measurement is possible.

DISCLAIMER: Every effort is made to ensure this information is accurate, however Triton does not assume any liability for the accuracy of the information and content provided in marketing or information materials, or for the consequences resulting from using the information and content provided. Triton does not guarantee or claim that said information and content is exhaustive. Claims as to the exhaustive nature of said information and content are excluded. The information and content is only provided for advertising purposes and is non-binding. No explicit or implied warranties or guarantees are made. The container displayed only represents a sample of the entire fleet.

The following items are registered or unregistered service marks in the United States and/or foreign jurisdictions pursuant to applicable intellectual property law and are the property of Triton International Limited and its subsidiaries: Triton® and TAL®.



CLASSIFICATION

For Sale: New

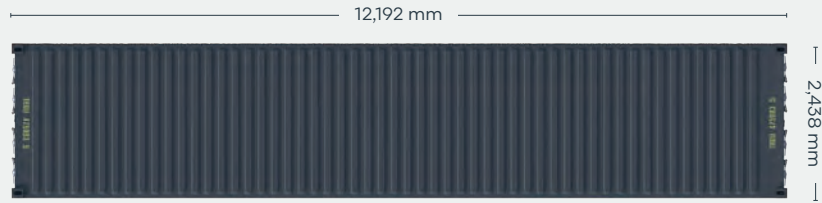
Available via Triton's global network of supply locations.

40ft Double Door Dry Container

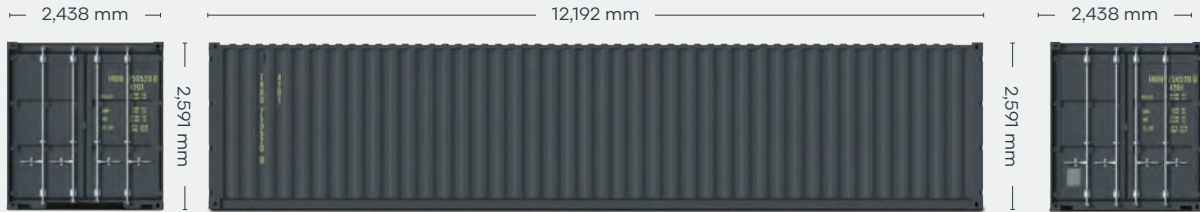


FEATURES

- Cargo doors on both ends provide easy access for stocking and retrieving stored goods
- Manufactured with rust resistant corten steel
- Secure and weatherproof, with vents to allow airflow
- Superior paint systems
- Resistant to damage and corrosion
- Advance orders in your preferred color (minimum volume required)
- Great options including 80 micron floor coating, lock boxes, waist high door locking handles
- Triton's industry leading new production testing and inspection criteria ensures the highest quality container
- Incredibly versatile and suitable for customers to modify into a wide range of applications
- Moved from factory to most major ports in the world
- Backed up by Triton's global network of supply locations and dedicated sales and support teams
- Available globally



CONTAINER ROOF



CONTAINER FRONT

CONTAINER SIDE

CONTAINER REAR

DIMENSIONS (METRIC/IMPERIAL)

EXTERNAL DIMENSIONS

Length	12,192 mm	40' 0.0"
Width	2,438 mm	8' 0.0"
Height	2,591 mm	8' 6.0"

INTERNAL DIMENSIONS

Length	11,978 mm	39' 3.6"
Width	2,352 mm	7' 8.6"
Height	2,393 mm	7' 10.2"

DOOR OPENING

Width	2,343 mm	7' 8.2"
Height	2,280 mm	7' 5.8"

CAPACITY & WEIGHTS

Inside Cubic Capacity	67.4 m ³	2380 ft ³
Max Gross	30,480 kg	67,200 lbs
Payload	26,900 kg	59,310 lbs
Tare	3,580 kg	7,890 lbs

NOTE: The dimensions and door openings of all containers correspond to ISO standards. However, due to production tolerances, a difference in measurement is possible.

DISCLAIMER: Every effort is made to ensure this information is accurate, however Triton does not assume any liability for the accuracy of the information and content provided in marketing or information materials, or for the consequences resulting from using the information and content provided. Triton does not guarantee or claim that said information and content is exhaustive. Claims as to the exhaustive nature of said information and content are excluded. The information and content is only provided for advertising purposes and is non-binding. No explicit or implied warranties or guarantees are made. The container displayed only represents a sample of the entire fleet.

The following items are registered or unregistered service marks in the United States and/or foreign jurisdictions pursuant to applicable intellectual property law and are the property of Triton International Limited and its subsidiaries: Triton® and TAL®.



45ft High Cube Pallet Wide Dry Container



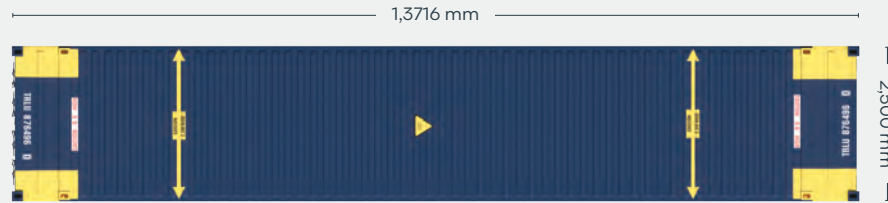
CLASSIFICATION

Lease

Available via Triton's global network of supply locations.

FEATURES

- It's distinctive shape allows for loading of 33 Euro Pallets, making it very competitive for Intermodal usage
- Low tare weight
- Fully intermodal: interchangeable on road, rail and sea
- The environment-friendly alternative to road transport (less CO₂ emission)
- Additional height and length provides extra internal cubic capacity, with a greater interior stacking capacity for your goods compared to a standard ISO container
- Manufactured with rust resistant corten steel
- Secure and weatherproof, with vents to allow airflow
- Strong steel construction to protect for impact damages
- Superior paint systems to protect from sea water and other environmental exposure
- Triton's industry leading new production testing and inspection criteria ensures the highest quality container
- Backed up by Triton's global network of supply locations and dedicated leasing and support teams



CONTAINER ROOF



CONTAINER FRONT

CONTAINER SIDE

CONTAINER REAR

DIMENSIONS (METRIC/IMPERIAL)

EXTERNAL DIMENSIONS

Length	13,716 mm	45' 0.0"
Width	2,500 mm	8' 2.4"
Height	2,896 mm	9' 6.0"

INTERNAL DIMENSIONS

Length	13,555 mm	44' 5.7"
Width (Between side panels)	2,444 mm	8' 0.2"
Height	2,695 mm	8' 10.1"

DOOR OPENING

Width	2,416 mm	7' 11.1"
Height	2,638 mm	8' 7.0"

CAPACITY & WEIGHTS

Inside Cubic Capacity	89.3 m ³	3,154 ft ³
Max Gross	34,000 kg	74,960 lbs
Payload	29,550 kg	65,150 lbs
Tare	4,450 kg	9,810 lbs

NOTE: The dimensions and door openings of all containers correspond to ISO standards. However, due to production tolerances, a difference in measurement is possible.

DISCLAIMER: Every effort is made to ensure this information is accurate, however Triton does not assume any liability for the accuracy of the information and content provided in marketing or information materials, or for the consequences resulting from using the information and content provided. Triton does not guarantee or claim that said information and content is exhaustive. Claims as to the exhaustive nature of said information and content are excluded. The information and content is only provided for advertising purposes and is non-binding. No explicit or implied warranties or guarantees are made. The container displayed only represents a sample of the entire fleet.

The following items are registered or unregistered service marks in the United States and/or foreign jurisdictions pursuant to applicable intellectual property law and are the property of Triton International Limited and its subsidiaries: Triton® and TAL®.



CLASSIFICATION

For Sale: Used

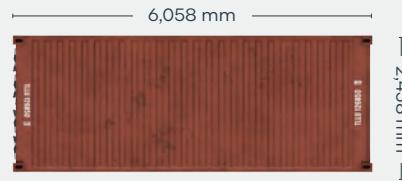
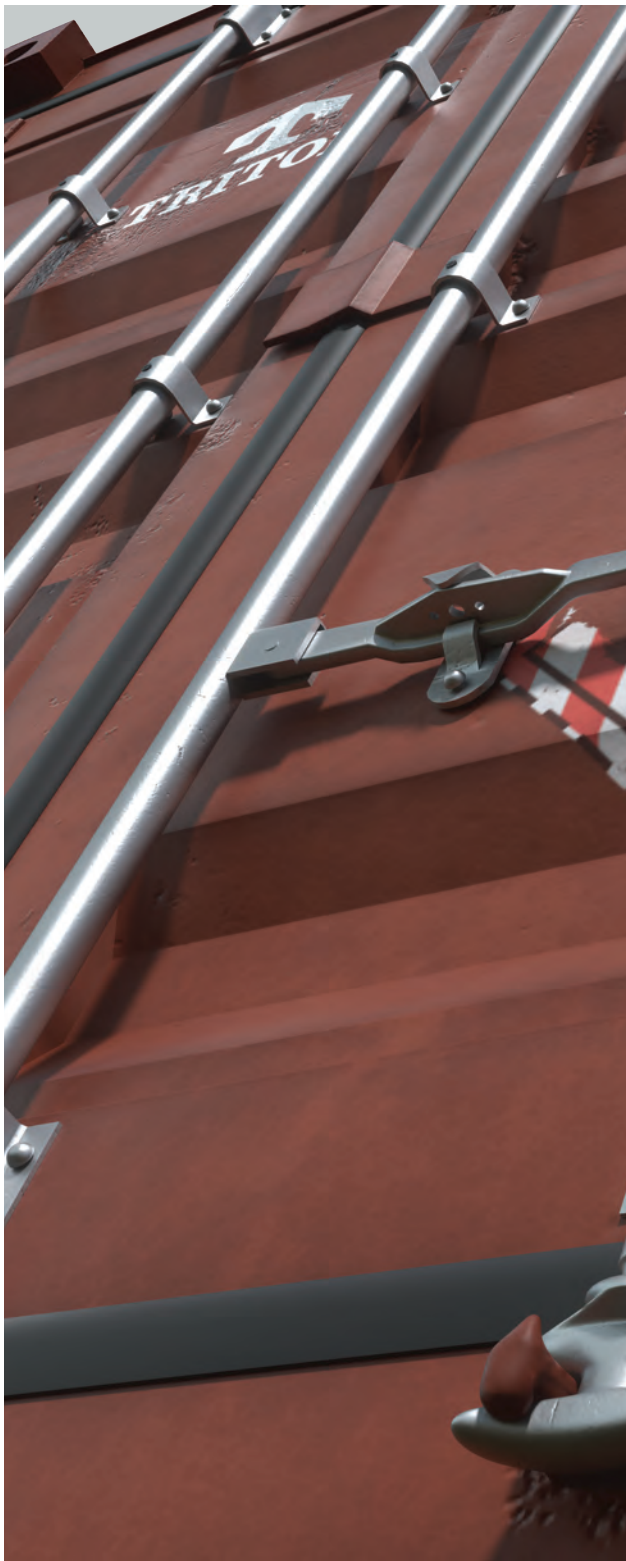
Available via Triton's global network of supply locations.

20ft Used Dry Container



FEATURES

- Available in a range of conditions to suit all needs, from cargo transportation to secure domestic storage
- Generally 11-15 years old when retired from service
- Constructed from rugged corten steel
- Durable and secure, with vents to allow airflow
- Resistant to damage and corrosion
- A variety of options available
- Incredibly versatile and suitable for customers to modify into a wide range of applications
- Available globally
- Backed up by Triton's global network of supply locations and dedicated sales and support teams
- Also available for Direct Delivery to buyer's facilities, providing significant cost savings on transport



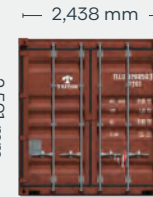
CONTAINER ROOF



CONTAINER FRONT



CONTAINER SIDE



CONTAINER REAR

DIMENSIONS (METRIC/IMPERIAL)

EXTERNAL DIMENSIONS

Length	6,058 mm	19' 10.5"
Width	2,438 mm	8' 0.0"
Height	2,591 mm	8' 6.0"

INTERNAL DIMENSIONS

Length	5,898 mm	19' 4.2"
Width	2,352 mm	7' 8.6"
Height	2,393 mm	7' 10.2"

DOOR OPENING

Width	2,340 mm	7' 8.1"
Height	2,280 mm	7' 5.8"

CAPACITY & WEIGHTS

Inside Cubic Capacity	33.2 m ³	1172 ft ³
Max Gross	30,480 kg	67,200 lbs
Payload	28,090–28,580 kg	61,931–63,011 lbs
Tare	1,900–2,390 kg	4,189–5,269 lbs

NOTE: The dimensions and door openings of all containers correspond to ISO standards. However, due to production tolerances, a difference in measurement is possible.

DISCLAIMER: Every effort is made to ensure this information is accurate, however Triton does not assume any liability for the accuracy of the information and content provided in marketing or information materials, or for the consequences resulting from using the information and content provided. Triton does not guarantee or claim that said information and content is exhaustive. Claims as to the exhaustive nature of said information and content are excluded. The information and content is only provided for advertising purposes and is non-binding. No explicit or implied warranties or guarantees are made. The container displayed only represents a sample of the entire fleet.

The following items are registered or unregistered service marks in the United States and/or foreign jurisdictions pursuant to applicable intellectual property law and are the property of Triton International Limited and its subsidiaries: Triton® and TAL®.



CLASSIFICATION

For Sale: Used

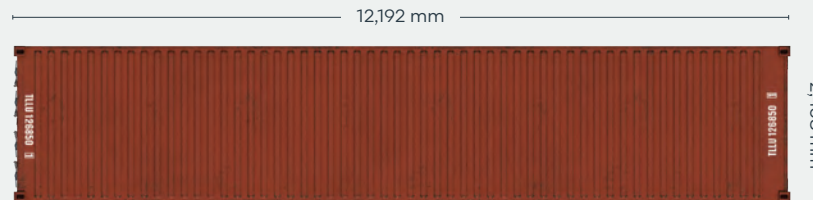
Available via Triton's global network of supply locations.

40ft Used Dry Container



FEATURES

- Available in a range of conditions to suit all needs, from cargo transportation to secure domestic storage
- Generally 11-15 years old when retired from service
- Constructed from rugged corten steel
- Durable and secure, with vents to allow airflow
- Resistant to damage and corrosion
- A variety of options available
- Incredibly versatile and suitable for customers to modify into a wide range of applications
- Available globally
- Backed up by Triton's global network of supply locations and dedicated sales and support teams
- Also available for direct delivery to buyer's facilities, providing significant cost savings on transport



CONTAINER ROOF



CONTAINER FRONT

CONTAINER SIDE

CONTAINER REAR

DIMENSIONS (METRIC/IMPERIAL)

EXTERNAL DIMENSIONS

Length	12,192 mm	40' 0.0"
Width	2,438 mm	8' 0.0"
Height	2,591 mm	8' 6.0"

INTERNAL DIMENSIONS

Length	12,032 mm	39' 5.7"
Width	2,352 mm	7' 8.6"
Height	2,393 mm	7' 10.2"

DOOR OPENING

Width	2,340 mm	7' 8.1"
Height	2,280 mm	7' 5.8"

CAPACITY & WEIGHTS

Inside Cubic Capacity	67.7 m ³	2390 ft ³
Max Gross	30,480–32,500 kg	67,200–71,650 lbs
Payload	26,980–29,070 kg	59,484–64,090 lbs
Tare	3,430–3,920 kg	7,560–8,640 lbs

NOTE: The dimensions and door openings of all containers correspond to ISO standards. However, due to production tolerances, a difference in measurement is possible.

DISCLAIMER: Every effort is made to ensure this information is accurate, however Triton does not assume any liability for the accuracy of the information and content provided in marketing or information materials, or for the consequences resulting from using the information and content provided. Triton does not guarantee or claim that said information and content is exhaustive. Claims as to the exhaustive nature of said information and content are excluded. The information and content is only provided for advertising purposes and is non-binding. No explicit or implied warranties or guarantees are made. The container displayed only represents a sample of the entire fleet.

The following items are registered or unregistered service marks in the United States and/or foreign jurisdictions pursuant to applicable intellectual property law and are the property of Triton International Limited and its subsidiaries: Triton® and TAL®.



CLASSIFICATION

For Sale: Used

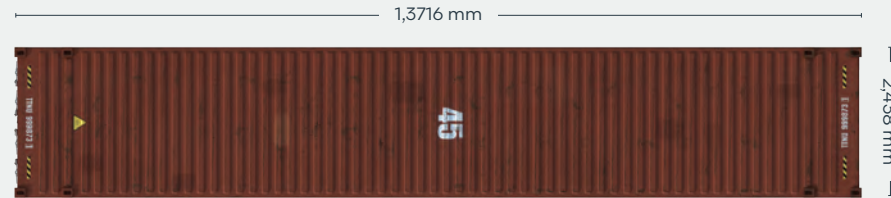
Available via Triton's global network of supply locations.

45ft Used High Cube Dry Container



FEATURES

- Available in a range of conditions to suit all needs, from cargo transportation to secure domestic storage
- Generally 11-15 years old when retired from service
- Constructed from rugged corten steel
- Additional height provides extra internal cubic capacity, which means greater interior stacking capacity for your goods
- Durable and secure, with vents to allow airflow
- Resistant to damage and corrosion
- Superior paint systems
- A variety of options available
- Incredibly versatile and suitable for customers to modify into a wide range of applications
- Available globally
- Backed up by Triton's global network of supply locations and dedicated sales and support teams
- Also available for Direct Delivery to buyer's facilities, providing significant cost savings on transport



CONTAINER ROOF



CONTAINER FRONT

CONTAINER SIDE

CONTAINER REAR

DIMENSIONS (METRIC/IMPERIAL)

EXTERNAL DIMENSIONS

Length	13,716 mm	45' 0.0"
Width	2,438 mm	8' 0.0"
Height	2,896 mm	9' 6.0"

INTERNAL DIMENSIONS

Length	13,556 mm	44' 5.7"
Width	2,352 mm	7' 8.6"
Height	2,698 mm	8' 10.2"

DOOR OPENING

Width	2,340 mm	7' 8.1"
Height	2,585 mm	8' 5.8"

CAPACITY & WEIGHTS

Inside Cubic Capacity	86.0 m ³	3040 ft ³
Max Gross	30,480–32,500 kg	67,200–71,650 lbs
Payload	25,270–27,900 kg	55,714–61,510 lbs
Tare	4,600 kg–5,210 kg	10,140–11,486 lbs

NOTE: The dimensions and door openings of all containers correspond to ISO standards. However, due to production tolerances, a difference in measurement is possible.

DISCLAIMER: Every effort is made to ensure this information is accurate, however Triton does not assume any liability for the accuracy of the information and content provided in marketing or information materials, or for the consequences resulting from using the information and content provided. Triton does not guarantee or claim that said information and content is exhaustive. Claims as to the exhaustive nature of said information and content are excluded. The information and content is only provided for advertising purposes and is non-binding. No explicit or implied warranties or guarantees are made. The container displayed only represents a sample of the entire fleet.

The following items are registered or unregistered service marks in the United States and/or foreign jurisdictions pursuant to applicable intellectual property law and are the property of Triton International Limited and its subsidiaries: Triton® and TAL®.



CLASSIFICATION

Lease

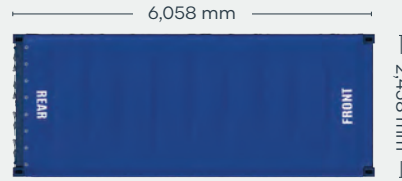
Available via Triton's global network of supply locations.

20ft Open Top Container



FEATURES

- Corrugated steel panels with strong wooden floor to protect the cargo
- Designed for cargos that require special loading dimensions
- Removable door header
- Removable roof bows and durable tarpaulin with customs approved cable to cover the topside
- Two swingable doors with custom approved closures
- 1 1/8" thick marine wooden floors with center dividers
- Several lashing rings and bars inside the container to secure the cargo
- Forklift pockets for easy empty handling
- Triton's industry leading new production testing and inspection criteria ensures the highest quality container
- Backed up by Triton's global network of supply locations and dedicated leasing and support teams
- Available in the high demand hub ports
- Flexible lease terms to meet your company needs



CONTAINER ROOF



CONTAINER FRONT



CONTAINER SIDE



CONTAINER REAR

DIMENSIONS (METRIC/IMPERIAL)

EXTERNAL DIMENSIONS

Length	6,058 mm	19' 10.5"
Width	2,438 mm	8' 0.0"
Height	2,591 mm	8' 6.0"

INTERNAL DIMENSIONS

Length	5,895 mm	19' 4.2"
Width (Between side panels)	2,352 mm	7' 8.6"
Height	2,348 mm	7' 8.4"

DOOR OPENING

Width	2,340 mm	7' 8.1"
Height	2,280 mm	7' 5.8"

CAPACITY & WEIGHTS

Inside Cubic Capacity	32.5 m ³	1,150 ft ³
Max Gross	30,480 kg	67,200 lbs
Payload	28,320 kg	62,440 lbs
Tare	2,160 kg	4,760 lbs

NOTE: The dimensions and door openings of all containers correspond to ISO standards. However, due to production tolerances, a difference in measurement is possible.

DISCLAIMER: Every effort is made to ensure this information is accurate, however Triton does not assume any liability for the accuracy of the information and content provided in marketing or information materials, or for the consequences resulting from using the information and content provided. Triton does not guarantee or claim that said information and content is exhaustive. Claims as to the exhaustive nature of said information and content are excluded. The information and content is only provided for advertising purposes and is non-binding. No explicit or implied warranties or guarantees are made. The container displayed only represents a sample of the entire fleet.

The following items are registered or unregistered service marks in the United States and/or foreign jurisdictions pursuant to applicable intellectual property law and are the property of Triton International Limited and its subsidiaries: Triton® and TAL®.



CLASSIFICATION

Lease

Available via Triton's global network of supply locations.

40ft Open Top Container

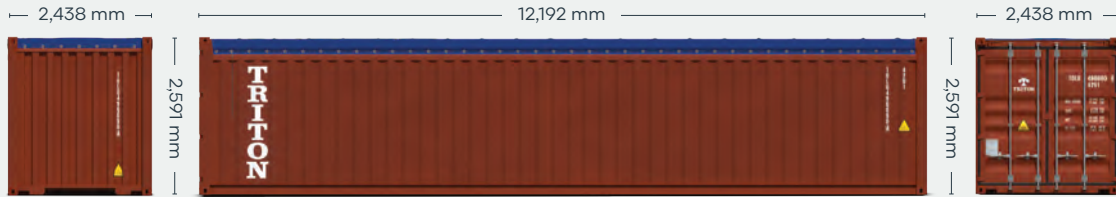


FEATURES

- Corrugated steel panels with strong wooden floor to protect the cargo
- Designed for cargos that require special loading dimensions
- Removable door header
- Removable roof bows and durable tarpaulin with customs approved cable to cover the topside.
- Two swingable doors with custom approved closures
- 1 1/8" thick marine wooden floors with center dividers
- Several lashing rings and bars inside the container to secure the cargo
- Triton's industry leading new production testing and inspection criteria ensures the highest quality container
- Backed up by Triton's global network of supply locations and dedicated leasing and support teams
- Available in the high demand hub ports
- Flexible lease terms to meet your company needs



CONTAINER ROOF



CONTAINER FRONT

CONTAINER SIDE

CONTAINER REAR

DIMENSIONS (METRIC/IMPERIAL)

EXTERNAL DIMENSIONS

Length	12,192 mm	40' 0.0"
Width	2,438 mm	8' 0.0"
Height	2,591 mm	8' 6.0"

INTERNAL DIMENSIONS

Length	12,032 mm	39' 5.7"
Width	2,352 mm	7' 8.6"
Height	2,348 mm	7' 8.4"

DOOR OPENING

Width	2,340 mm	7' 8.1"
Height	2,280 mm	7' 5.8"

CAPACITY & WEIGHTS

Inside Cubic Capacity	65.9 m ³	2330 ft ³
Max Gross	32,500 kg	71,650 lbs
Payload	28,760 kg	63,400 lbs
Tare	3,740 kg	8,250 lbs

NOTE: The dimensions and door openings of all containers correspond to ISO standards. However, due to production tolerances, a difference in measurement is possible.

DISCLAIMER: Every effort is made to ensure this information is accurate, however Triton does not assume any liability for the accuracy of the information and content provided in marketing or information materials, or for the consequences resulting from using the information and content provided. Triton does not guarantee or claim that said information and content is exhaustive. Claims as to the exhaustive nature of said information and content are excluded. The information and content is only provided for advertising purposes and is non-binding. No explicit or implied warranties or guarantees are made. The container displayed only represents a sample of the entire fleet.

The following items are registered or unregistered service marks in the United States and/or foreign jurisdictions pursuant to applicable intellectual property law and are the property of Triton International Limited and its subsidiaries: Triton® and TAL®.



CLASSIFICATION

Lease

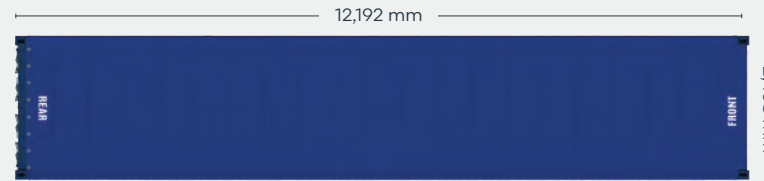
Available via Triton's global network of supply locations.

40ft High Cube Open Top Container

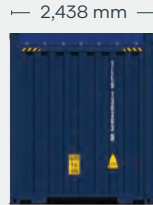


FEATURES

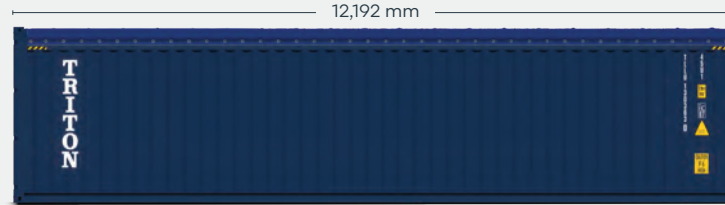
- Corrugated steel panels with strong wooden floor to protect the cargo
- Designed for cargos that require special loading dimensions
- Removable door header
- Removable roof bows and durable tarpaulin with customs approved cable to cover the topside.
- Two swingable doors with custom approved closures
- 1 1/8" thick marine wooden floors with center dividers
- Several lashing rings and bars inside the container to secure the cargo
- Triton's industry leading new production testing and inspection criteria ensures the highest quality container
- Backed up by Triton's global network of supply locations and dedicated leasing and support teams
- Available in the high demand hub ports
- Flexible lease terms to meet your company needs



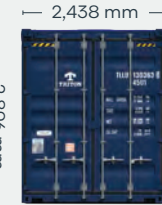
CONTAINER ROOF



CONTAINER FRONT



CONTAINER SIDE



CONTAINER REAR

DIMENSIONS (METRIC/IMPERIAL)

EXTERNAL DIMENSIONS

Length	12,192 mm	40' 0.0"
Width	2,438 mm	8' 0.0"
Height	2,896 mm	9' 6.0"

INTERNAL DIMENSIONS

Length	12,032 mm	39' 5.7"
Width	2,352 mm	7' 8.6"
Height	2,653 mm	8' 8.4"

DOOR OPENING

Width	2,340 mm	7' 8.1"
Height	2,585 mm	8' 5.8"

CAPACITY & WEIGHTS

Max Gross	32,500 kg	71,650 lbs
Payload	28,590 kg	63,030 lbs
Tare	3,910 kg	8,620 lbs

NOTE: The dimensions and door openings of all containers correspond to ISO standards. However, due to production tolerances, a difference in measurement is possible.

DISCLAIMER: Every effort is made to ensure this information is accurate, however Triton does not assume any liability for the accuracy of the information and content provided in marketing or information materials, or for the consequences resulting from using the information and content provided. Triton does not guarantee or claim that said information and content is exhaustive. Claims as to the exhaustive nature of said information and content are excluded. The information and content is only provided for advertising purposes and is non-binding. No explicit or implied warranties or guarantees are made. The container displayed only represents a sample of the entire fleet.

The following items are registered or unregistered service marks in the United States and/or foreign jurisdictions pursuant to applicable intellectual property law and are the property of Triton International Limited and its subsidiaries: Triton® and TAL®.



CLASSIFICATION

For Sale: Used

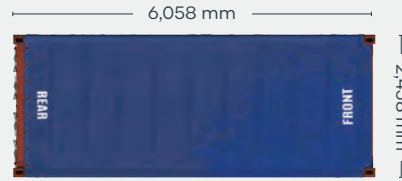
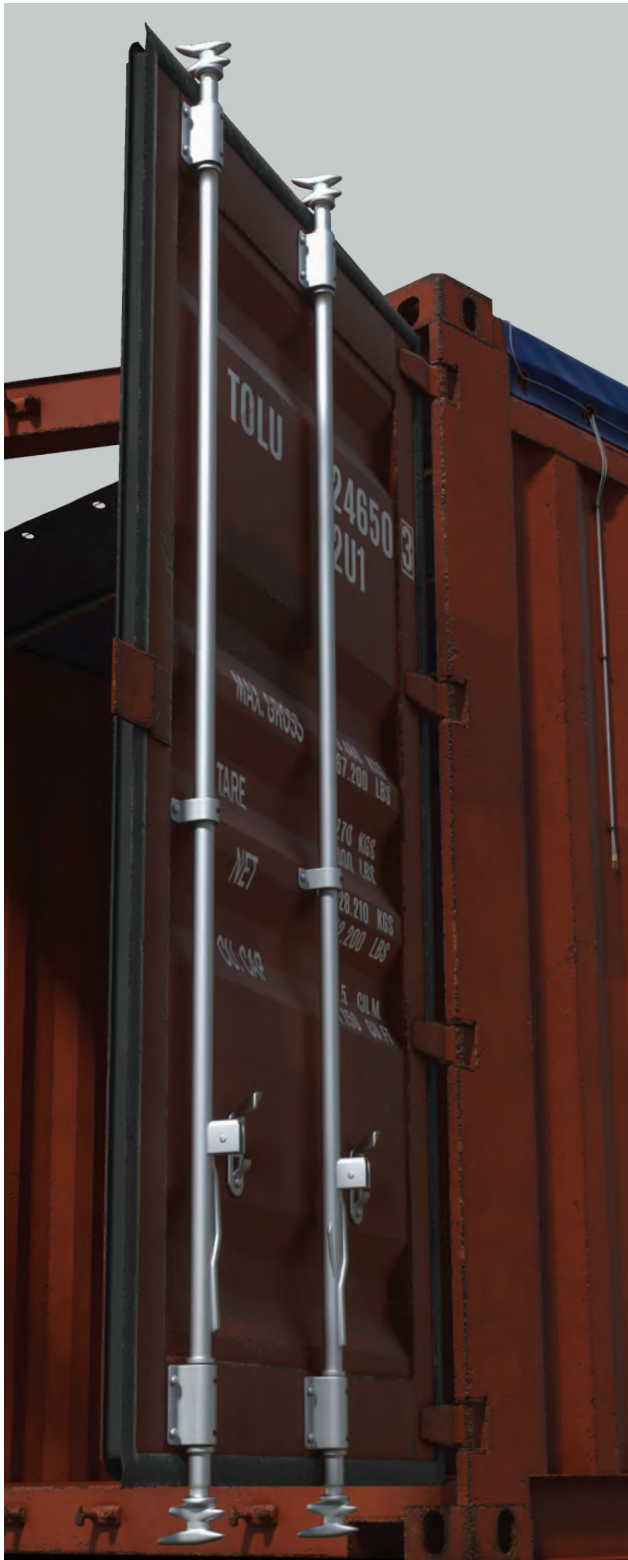
Available via Triton's global network of supply locations.

20ft Used Open Top Container

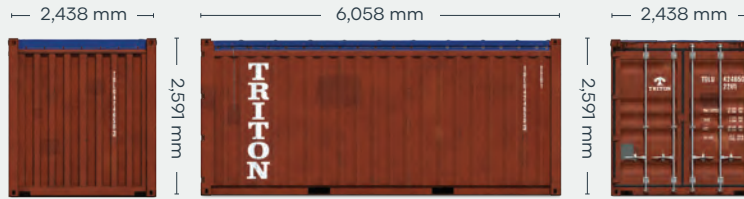


FEATURES

- Rugged corrugated steel exterior panels with a thick wooden floor
- Designed for cargos that require special loading dimensions
- Removable roof bows and heavy duty tarpaulin
- Swivel-out door header
- 14 gauge corrugated steel sides and 14 gauge locking steel double-end swing doors
- 1½" thick marine plywood floors, forklift tested to 16,000 lbs per 44 square inches
- Tie down steel lashing rings, 4000 lbs. cap. each
- (2) way laden fork lift pockets
- Security roof tarpaulin locking cable
- Backed up by Triton's global network of supply locations and dedicated sales and support teams
- Available globally



CONTAINER ROOF



CONTAINER FRONT

CONTAINER SIDE

CONTAINER REAR

DIMENSIONS (METRIC/IMPERIAL)

EXTERNAL DIMENSIONS

Length	6,058 mm	19' 10.5"
Width	2,438 mm	8' 0.0"
Height	2,591 mm	8' 6.0"

INTERNAL DIMENSIONS

Length	5,895 mm	19' 4.2"
Width (Between side panels)	2,352 mm	7' 8.6"
Height	2,348 mm	7' 8.4"

DOOR OPENING

Width	2,340 mm	7' 8.1"
Height	2,280 mm	7' 5.8"

CAPACITY & WEIGHTS

Inside Cubic Capacity	32.5 m ³	1,150 ft ³
Max Gross	30,480 kg	67,200 lbs
Payload	27,780–28,320 kg	61,250–62,440 lbs
Tare	2,160–2,700 kg	4,760–5,950 lbs

NOTE: The dimensions and door openings of all containers correspond to ISO standards. However, due to production tolerances, a difference in measurement is possible.

DISCLAIMER: Every effort is made to ensure this information is accurate, however Triton does not assume any liability for the accuracy of the information and content provided in marketing or information materials, or for the consequences resulting from using the information and content provided. Triton does not guarantee or claim that said information and content is exhaustive. Claims as to the exhaustive nature of said information and content are excluded. The information and content is only provided for advertising purposes and is non-binding. No explicit or implied warranties or guarantees are made. The container displayed only represents a sample of the entire fleet.

The following items are registered or unregistered service marks in the United States and/or foreign jurisdictions pursuant to applicable intellectual property law and are the property of Triton International Limited and its subsidiaries: Triton® and TAL®.



CLASSIFICATION

For Sale: Used

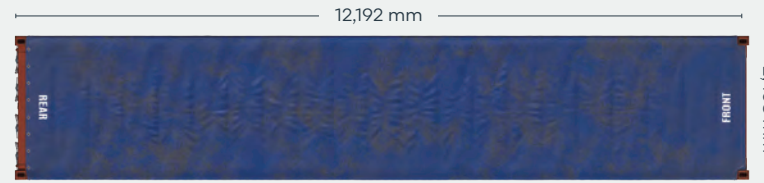
Available via Triton's global network of supply locations.

40ft Used Open Top Container

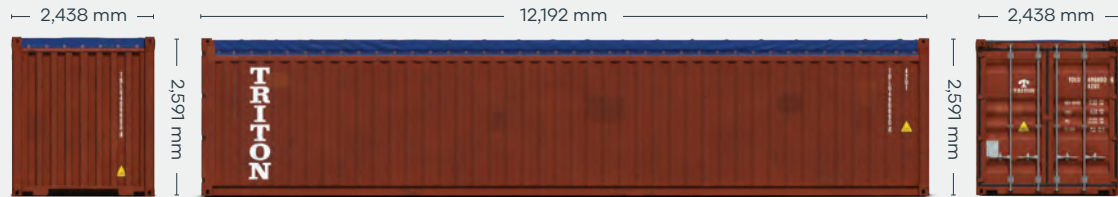


FEATURES

- Rugged corrugated steel exterior panels with a thick wooden floor
- Designed for cargos that require special loading dimensions
- Removable roof bows and heavy duty tarpaulin
- Swivel-out door header
- 14 gauge corrugated steel sides
- 14 gauge locking steel double end swing doors
- 1½" thick marine plywood floors/omega-3 floors, forklift tested to 16,000 lbs per 44 square inches
- Tie down steel lashing rings, 4000 lbs. cap. each
- (2) way laden fork lift pockets
- Security roof tarpaulin locking cable
- Backed up by Triton's global network of supply locations and dedicated sales and support teams
- Available globally



CONTAINER ROOF



CONTAINER FRONT

CONTAINER SIDE

CONTAINER REAR

DIMENSIONS (METRIC/IMPERIAL)

EXTERNAL DIMENSIONS

Length	12,192 mm	40' 0.0"
Width	2,438 mm	8' 0.0"
Height	2,591 mm	8' 6.0"

INTERNAL DIMENSIONS

Length	12,032 mm	39' 5.7"
Width	2,352 mm	7' 8.6"
Height	2,348 mm	7' 8.4"

DOOR OPENING

Width	2,340 mm	7' 8.1"
Height	2,280 mm	7' 5.8"

CAPACITY & WEIGHTS

Inside Cubic Capacity	65.9 m ³	2330 ft ³
Max Gross	30,480–32,500 kg	67,200–71,650 lbs
Payload	25,780–28,760 kg	56,840–63,400 lbs
Tare	3,700 kg–4,700 kg	8,160–10,360 lbs

NOTE: The dimensions and door openings of all containers correspond to ISO standards. However, due to production tolerances, a difference in measurement is possible.

DISCLAIMER: Every effort is made to ensure this information is accurate, however Triton does not assume any liability for the accuracy of the information and content provided in marketing or information materials, or for the consequences resulting from using the information and content provided. Triton does not guarantee or claim that said information and content is exhaustive. Claims as to the exhaustive nature of said information and content are excluded. The information and content is only provided for advertising purposes and is non-binding. No explicit or implied warranties or guarantees are made. The container displayed only represents a sample of the entire fleet.

The following items are registered or unregistered service marks in the United States and/or foreign jurisdictions pursuant to applicable intellectual property law and are the property of Triton International Limited and its subsidiaries: Triton® and TAL®.



CLASSIFICATION

Lease

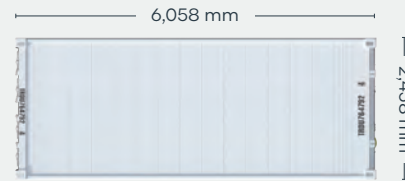
Available via Triton's global network of supply locations.

20ft Refrigerated Container



FEATURES

- Designed for safe transportation of temperature sensitive cargo and frozen & perishable goods. (Food-grade approved)
- Ideal for on-site temperature controlled storage
- Strong, robust, insulated and repair friendly
- State-of-the art design and low power consumption makes units highly efficient
- Standard features: HGSS roof end panels, T-bar flooring and interior aluminum scuff lining
- Triton's industry leading new production testing and inspection criteria ensures the highest quality container
- Can be ordered with Carrier, Starcool, Daikin or Thermo King machinery, with 3 Phase Power. These leading brands offer worldwide availability for parts and service
- Provisioned for track & trace feature
- Resistant to bacteria
- Low heat leakage values
- Low GWP refrigerants compatible
- Backed up by Triton's global network of supply locations and dedicated leasing and support teams
- Available globally



REEFER ROOF



REEFER FRONT

REEFER SIDE

REEFER REAR

DIMENSIONS (METRIC/IMPERIAL)

EXTERNAL DIMENSIONS

Length	6,058 mm	19' 10.5"
Width	2,438 mm	8' 0.0"
Height	2,591 mm	8' 6.0"

INTERNAL DIMENSIONS

Length	5,454 mm	17' 10.7"
Width	2,290 mm	7' 6.2"
Height	2,276 mm	7' 5.6"

DOOR OPENING

Width	2,294 mm	7' 6.3"
Height	2,264 mm	7' 5.1"

CAPACITY & WEIGHTS

Inside Cubic Capacity	28.4 m ³	1003 ft ³
Max Gross	30,480 kg	67,200 lbs
Payload	27,650 kg	60,960 lbs
Tare*	2,830 kg	6,240 lbs

*Tare can vary slightly based on reefer machine type.

NOTE: The dimensions and door openings of all containers correspond to ISO standards. However, due to production tolerances, a difference in measurement is possible.

DISCLAIMER: Every effort is made to ensure this information is accurate, however Triton does not assume any liability for the accuracy of the information and content provided in marketing or information materials, or for the consequences resulting from using the information and content provided. Triton does not guarantee or claim that said information and content is exhaustive. Claims as to the exhaustive nature of said information and content are excluded. The information and content is only provided for advertising purposes and is non-binding. No explicit or implied warranties or guarantees are made. The container displayed only represents a sample of the entire fleet.

The following items are registered or unregistered service marks in the United States and/or foreign jurisdictions pursuant to applicable intellectual property law and are the property of Triton International Limited and its subsidiaries: Triton® and TAL®.



CLASSIFICATION

Lease

Available via Triton's global network of supply locations.

40ft High Cube Refrigerated Container

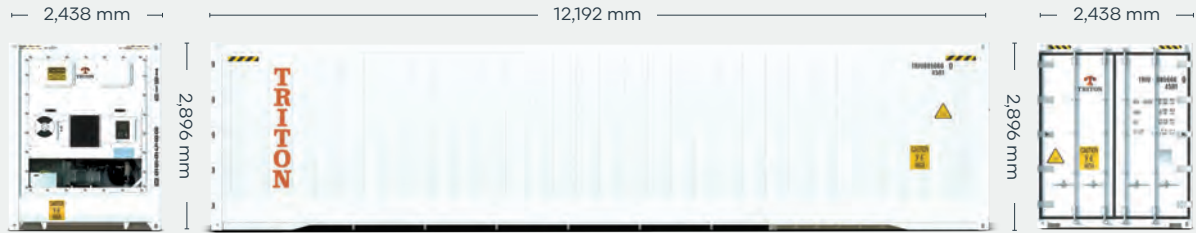


FEATURES

- Additional height provides extra internal cubic capacity, which means greater interior stacking capacity for your goods
- Designed for safe transportation of temperature sensitive cargo and frozen and perishable goods. (Food-grade approved)
- Ideal for on-site temperature controlled storage
- Strong, robust, insulated and repair friendly
- State-of-the-art design and low power consumption makes units highly efficient
- Standard features: HGSS roof end panels, T-bar flooring and interior aluminum scuff lining
- Provisioned for track & trace feature
- Triton's industry leading new production testing and inspection criteria ensures the highest quality container
- Resistant to bacteria
- Low heat leakage values
- Low GWP refrigerants compatible
- Can be ordered with Carrier, Starcool, Daikin or Thermo King machinery, with 3 Phase Power. These leading brands offer worldwide availability for parts and service
- Backed up by Triton's global network of supply locations and dedicated leasing and support teams
- Available globally



REEFER ROOF



REEFER FRONT

REEFER SIDE

REEFER REAR

DIMENSIONS (METRIC/IMPERIAL)

EXTERNAL DIMENSIONS

Length	12,192 mm	40' 0.0"
Width	2,438 mm	8' 0.0"
Height	2,896 mm	9' 6.0"

INTERNAL DIMENSIONS

Length	11,588 mm	38' 0.2"
Width	2,290 mm	7' 6.2"
Height	2,547.5 mm	8' 4.3"

DOOR OPENING

Width	2,294 mm	7' 6.3"
Height	2,569 mm	8' 5.1"

CAPACITY & WEIGHTS

Inside Cubic Capacity	67.6 m ³	2,387 ft ³
Max Gross	35,000 kg	77,160 lbs
Payload	30,440 kg	67,110 lbs
Tare*	4,560 kg	10,050 lbs

*Tare can vary slightly based on reefer machine type.

NOTE: The dimensions and door openings of all containers correspond to ISO standards. However, due to production tolerances, a difference in measurement is possible.

DISCLAIMER: Every effort is made to ensure this information is accurate, however Triton does not assume any liability for the accuracy of the information and content provided in marketing or information materials, or for the consequences resulting from using the information and content provided. Triton does not guarantee or claim that said information and content is exhaustive. Claims as to the exhaustive nature of said information and content are excluded. The information and content is only provided for advertising purposes and is non-binding. No explicit or implied warranties or guarantees are made. The container displayed only represents a sample of the entire fleet.

The following items are registered or unregistered service marks in the United States and/or foreign jurisdictions pursuant to applicable intellectual property law and are the property of Triton International Limited and its subsidiaries: Triton® and TAL®.



45ft High Cube Pallet Wide Refrigerated Container



CLASSIFICATION

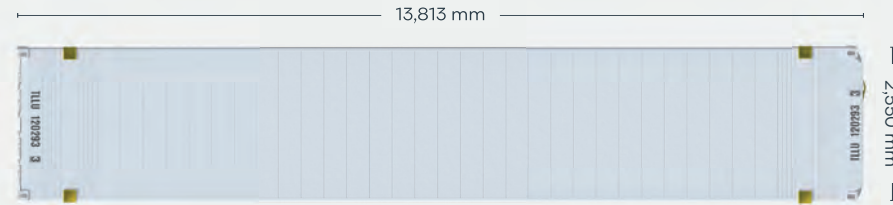
Lease

Available via Triton's global network of supply locations.

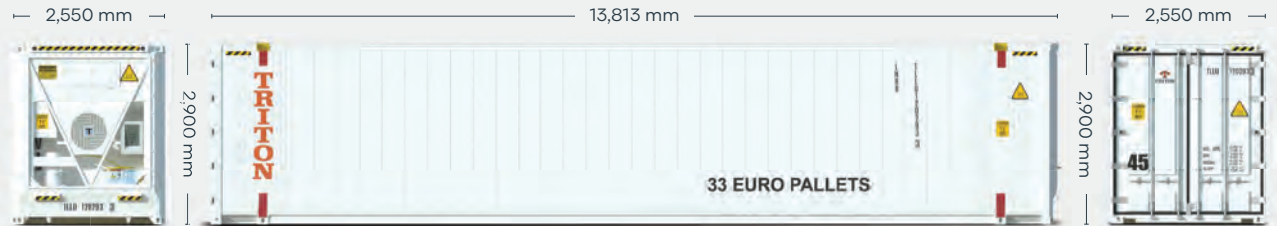


FEATURES

- Additional height and length provides extra internal cubic capacity, which means greater interior stacking capacity for your goods
- Designed for safe transportation of temperature sensitive cargo and frozen and perishable goods. (Food-grade approved)
- Resistant to bacteria
- Ideal for on-site temperature controlled storage
- Strong, robust, insulated and repair friendly
- State-of-the-art design and low power consumption makes units highly efficient
- Provisioned for track & trace feature
- Low GWP refrigerants compatible
- Standard features: HGSS roof end panels, document holder, power cable guide, cargo stowage bars, vacuum valve, flat flooring and interior aluminum scuff lining
- Triton's industry leading new production testing and inspection criteria ensures the highest quality container
- Can be ordered with Carrier, Starcool, Daikin or Thermo King machinery, with 3 Phase Power. These leading brands offer worldwide availability for parts and service
- Backed up by Triton's global network of supply locations and dedicated leasing and support teams
- Available globally



REEFER ROOF



REEFER FRONT

REEFER SIDE

REEFER REAR

DIMENSIONS (METRIC/IMPERIAL)

EXTERNAL DIMENSIONS

Length	13,813 mm	45' 0.0"
Width	2,550 mm	8' 3.6"
Height	2,900 mm	9' 5.1"

DOOR OPENING

Width	2,440 mm	8' 0.0"
Height	2,570 mm	8' 4.3"

INTERNAL DIMENSIONS

Length	13,261 mm	43' 0.0"
Width	2,440 mm	8' 0.0"
Height	2,570 mm	8' 4.3"

CAPACITY & WEIGHTS

Inside Cubic Capacity	83.5 m ³	2,949 ft ³
Max Gross	35,000 kg	77,160 lbs
Payload	28,920 kg	63,760 lbs
Tare*	6,080 kg	13,400 lbs

*Tare can vary slightly based on reefer machine type.

NOTE: The dimensions and door openings of all containers correspond to ISO standards. However, due to production tolerances, a difference in measurement is possible.

DISCLAIMER: Every effort is made to ensure this information is accurate, however Triton does not assume any liability for the accuracy of the information and content provided in marketing or information materials, or for the consequences resulting from using the information and content provided. Triton does not guarantee or claim that said information and content is exhaustive. Claims as to the exhaustive nature of said information and content are excluded. The information and content is only provided for advertising purposes and is non-binding. No explicit or implied warranties or guarantees are made. The container displayed only represents a sample of the entire fleet.

The following items are registered or unregistered service marks in the United States and/or foreign jurisdictions pursuant to applicable intellectual property law and are the property of Triton International Limited and its subsidiaries: Triton® and TAL®.



20ft Used Refrigerated Container



CLASSIFICATION

For Sale: Used

Available via Triton's global network of supply locations.



FEATURES

- Available in a range of conditions to suit all needs
- Refrigerated and insulated shipping containers
- Ideal for on-site temperature controlled storage
- Designed for safe transportation of perishable food, beverages and temperature sensitive cargo
- State-of-the-art design makes units highly efficient
- Most units have stainless steel lined interiors and T-bar flooring
- Most machinery comes with 3 Phase power and CFC friendly refrigerant
- Backed up by Triton's global network of supply locations and dedicated sales and support teams
- Available globally



REEFER ROOF



REEFER FRONT



REEFER SIDE



REEFER REAR

DIMENSIONS (METRIC/IMPERIAL)

EXTERNAL DIMENSIONS

Length	6,058 mm	19' 10.5"
Width	2,438 mm	8' 0.0"
Height	2,591 mm	8' 6.0"

INTERNAL DIMENSIONS

Length	5,454 mm	17' 10.7"
Width	2,290 mm	7' 6.2"
Height	2,276 mm	7' 5.6"

DOOR OPENING

Width	2,294 mm	7' 6.3"
Height	2,264 mm	7' 5.1"

CAPACITY & WEIGHTS

Inside Cubic Capacity	28.4 m ³	1003 ft ³
Max Gross	30,480 kg	67,200 lbs
Payload	27,650 kg	60,960 lbs
Tare*	2,830 kg	6,240 lbs

*Tare can vary slightly based on reefer machine type.

NOTE: The dimensions and door openings of all containers correspond to ISO standards. However, due to production tolerances, a difference in measurement is possible.

DISCLAIMER: Every effort is made to ensure this information is accurate, however Triton does not assume any liability for the accuracy of the information and content provided in marketing or information materials, or for the consequences resulting from using the information and content provided. Triton does not guarantee or claim that said information and content is exhaustive. Claims as to the exhaustive nature of said information and content are excluded. The information and content is only provided for advertising purposes and is non-binding. No explicit or implied warranties or guarantees are made. The container displayed only represents a sample of the entire fleet.

The following items are registered or unregistered service marks in the United States and/or foreign jurisdictions pursuant to applicable intellectual property law and are the property of Triton International Limited and its subsidiaries: Triton® and TAL®.



CLASSIFICATION

For Sale: Used

Available via Triton's global network of supply locations.

45ft Used High Cube Pallet Wide Refrigerated Container



FEATURES

- Available in a range of conditions to suit all needs
- Additional height and length provides extra internal cubic capacity, which means greater interior stacking capacity for your goods
- Refrigerated and insulated shipping containers
- Designed for safe transportation of perishable food, beverages and temperature sensitive cargo
- Ideal for on-site temperature controlled storage
- State of the art design makes units highly efficient
- Most units have stainless steel lined interiors and T-bar flooring
- Most machinery comes with 3 Phase power and CFC friendly refrigerant
- Backed up by Triton's global network of supply locations and dedicated sales and support teams
- Available globally



REEFER ROOF



REEFER FRONT

REEFER SIDE

REEFER REAR

DIMENSIONS (METRIC/IMPERIAL)

EXTERNAL DIMENSIONS

Length	13,813 mm	45' 0.0"
Width	2,550 mm	8' 3.6"
Height	2,900 mm	9' 5.1"

DOOR OPENING

Width	2,440 mm	8' 0.0"
Height	2,570 mm	8' 4.3"

INTERNAL DIMENSIONS

Length	13,261 mm	43' 0.0"
Width	2,440 mm	8' 0.0"
Height	2,570 mm	8' 4.3"

CAPACITY & WEIGHTS

Inside Cubic Capacity	83.5 m ³	2,949 ft ³
Max Gross	35,000 kg	77,160 lbs
Payload	28,920 kg	63,760 lbs
Tare*	6,080 kg	13,400 lbs

*Tare can vary slightly based on reefer machine type.

NOTE: The dimensions and door openings of all containers correspond to ISO standards. However, due to production tolerances, a difference in measurement is possible.

DISCLAIMER: Every effort is made to ensure this information is accurate, however Triton does not assume any liability for the accuracy of the information and content provided in marketing or information materials, or for the consequences resulting from using the information and content provided. Triton does not guarantee or claim that said information and content is exhaustive. Claims as to the exhaustive nature of said information and content are excluded. The information and content is only provided for advertising purposes and is non-binding. No explicit or implied warranties or guarantees are made. The container displayed only represents a sample of the entire fleet.

The following items are registered or unregistered service marks in the United States and/or foreign jurisdictions pursuant to applicable intellectual property law and are the property of Triton International Limited and its subsidiaries: Triton® and TAL®.



20ft Flush Folding Flatracks



CLASSIFICATION

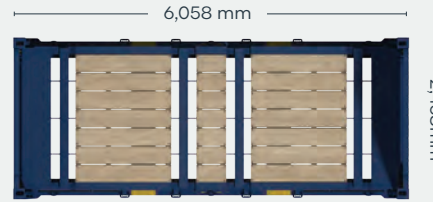
Lease

Available via Triton's global network of supply locations.



FEATURES

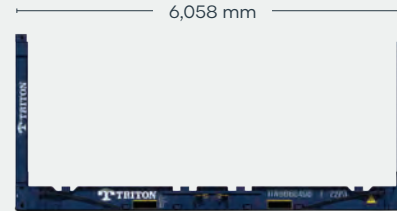
- Built to carry heavy or oversized cargoes
- Great for specialized shipments of steel, pipes, drums and machinery
- Forklift pockets for easy empty handling
- Heavy duty steel frames and thick plank floors and lashing rings all around
- With flush folding end frames to allow for efficient stacking and repositioning
- Triton's industry leading new production testing and inspection criteria ensures the highest quality container
- Available in the high demand hub ports
- Backed up by Triton's global network of supply locations and dedicated leasing and support teams
- Flexible lease terms to meet your company needs



FLATRACK TOP



FLATRACK FRONT



FLATRACK SIDE



FLATRACK REAR

DIMENSIONS (METRIC/IMPERIAL)

EXTERNAL DIMENSIONS

Length (Base bottom casting)	6,058 mm	19' 10.5"
Width (Base bottom casting)	2,438 mm	8' 0.0"
Height (End frame up)	2,591 mm	8' 6.0"
Height (End frame down)	370 mm	1' 2.6"

INTERNAL DIMENSIONS

Length (Between end panels)	6,038 mm	19' 9.7"
Width (Over bottom side rail)	2,194 mm	7' 2.4"
Height (Side rail to top castings)	2,233 mm	7' 3.9"

CAPACITY & WEIGHTS

Max Gross	45,000 kg	99,200 lbs
Payload	42,000 kg	92,590 lbs
Tare	3,000 kg	6,640 lbs

NOTE: The dimensions of containers correspond to ISO standards.

However, due to production tolerances, a difference in measurement is possible.

DISCLAIMER: Every effort is made to ensure this information is accurate, however Triton does not assume any liability for the accuracy of the information and content provided in marketing or information materials, or for the consequences resulting from using the information and content provided. Triton does not guarantee or claim that said information and content is exhaustive. Claims as to the exhaustive nature of said information and content are excluded. The information and content is only provided for advertising purposes and is non-binding. No explicit or implied warranties or guarantees are made. The container displayed only represents a sample of the entire fleet.

The following items are registered or unregistered service marks in the United States and/or foreign jurisdictions pursuant to applicable intellectual property law and are the property of Triton International Limited and its subsidiaries: Triton® and TAL®.



CLASSIFICATION

Lease

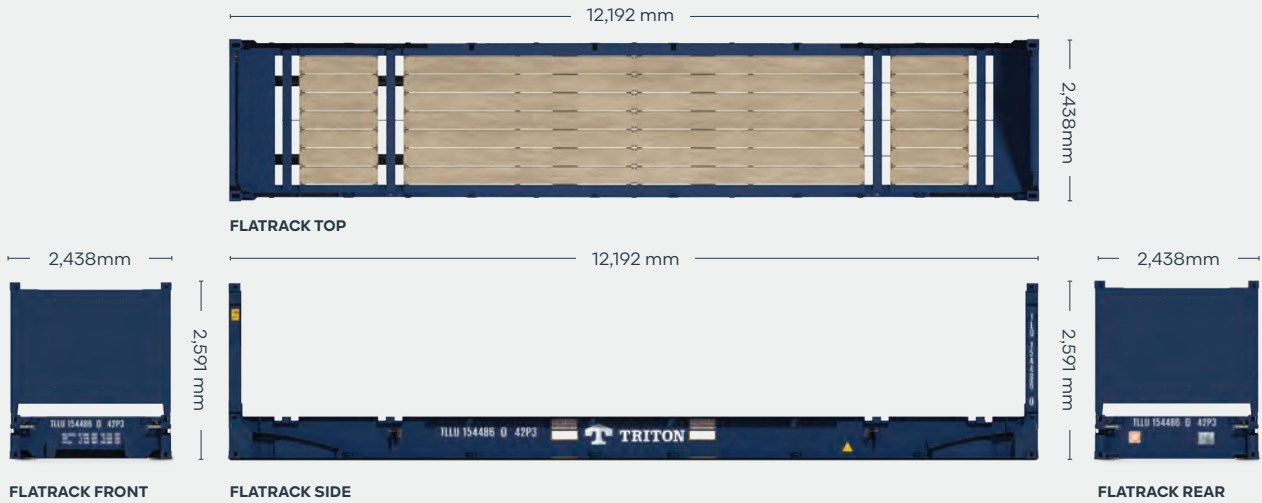
Available via Triton's global network of supply locations.

40ft Flush Folding Flatracks



FEATURES

- Built to carry heavy or oversized cargoes
- Great for specialized shipments of steel, pipes, drums and machinery
- Forklift pockets for easy empty handling
- Heavy duty steel frames and thick plank floors and lashing rings all around
- With flush folding end frames to allow for efficient stacking and repositioning
- Triton's industry leading new production testing and inspection criteria ensures the highest quality container
- Available in the high demand hub ports
- Backed up by Triton's global network of supply locations and dedicated leasing and support teams
- Flexible lease terms to meet your company needs



DIMENSIONS (METRIC/IMPERIAL)

EXTERNAL DIMENSIONS

Length (Base bottom casting)	12,192 mm	40' 0.0"
Width (Base bottom casting)	2,438 mm	8' 0.0"
Height (End frame up)	2,591 mm	8' 6.0"
Height (End frame down)	648 mm	2' 1.5"

INTERNAL DIMENSIONS

Length (Between end panels)	12,182 mm	39' 11.6"
Width (Over bottom side rail)	2,374 mm	7' 9.5"
Height (Side rail to top castings)	1,959 mm	6' 5.1"

CAPACITY & WEIGHTS

Max Gross	52,500 kg	115,740 lbs
Payload	47,260 kg	104,190 lbs
Tare	5,240 kg	11,550 lbs

NOTE: The dimensions of containers correspond to ISO standards.

However, due to production tolerances, a difference in measurement is possible.

DISCLAIMER: Every effort is made to ensure this information is accurate, however Triton does not assume any liability for the accuracy of the information and content provided in marketing or information materials, or for the consequences resulting from using the information and content provided. Triton does not guarantee or claim that said information and content is exhaustive. Claims as to the exhaustive nature of said information and content are excluded. The information and content is only provided for advertising purposes and is non-binding. No explicit or implied warranties or guarantees are made. The container displayed only represents a sample of the entire fleet.

The following items are registered or unregistered service marks in the United States and/or foreign jurisdictions pursuant to applicable intellectual property law and are the property of Triton International Limited and its subsidiaries: Triton® and TAL®.



CLASSIFICATION

Lease

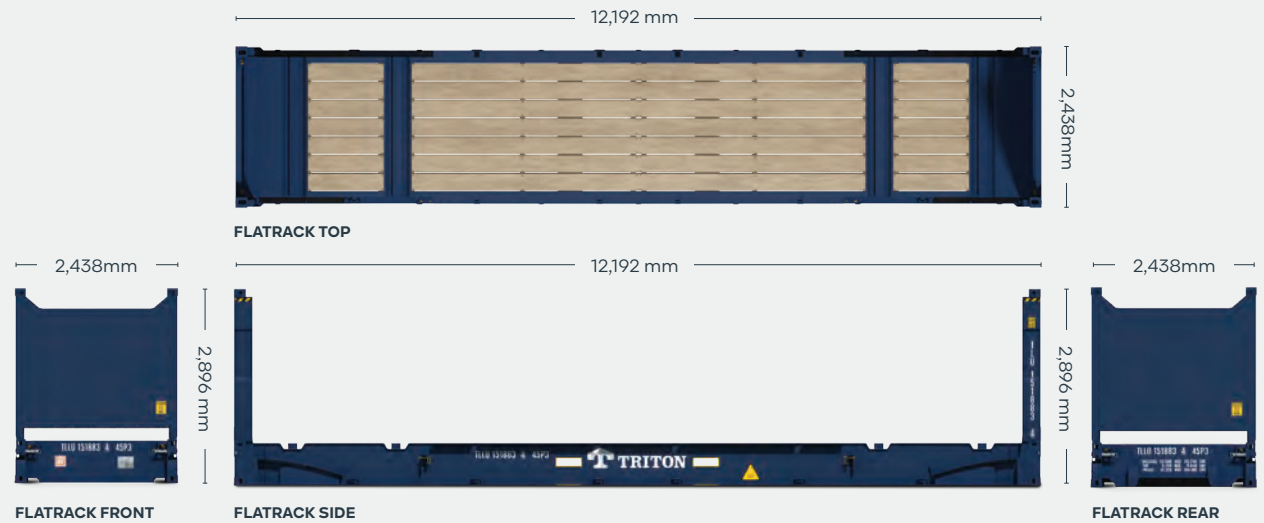
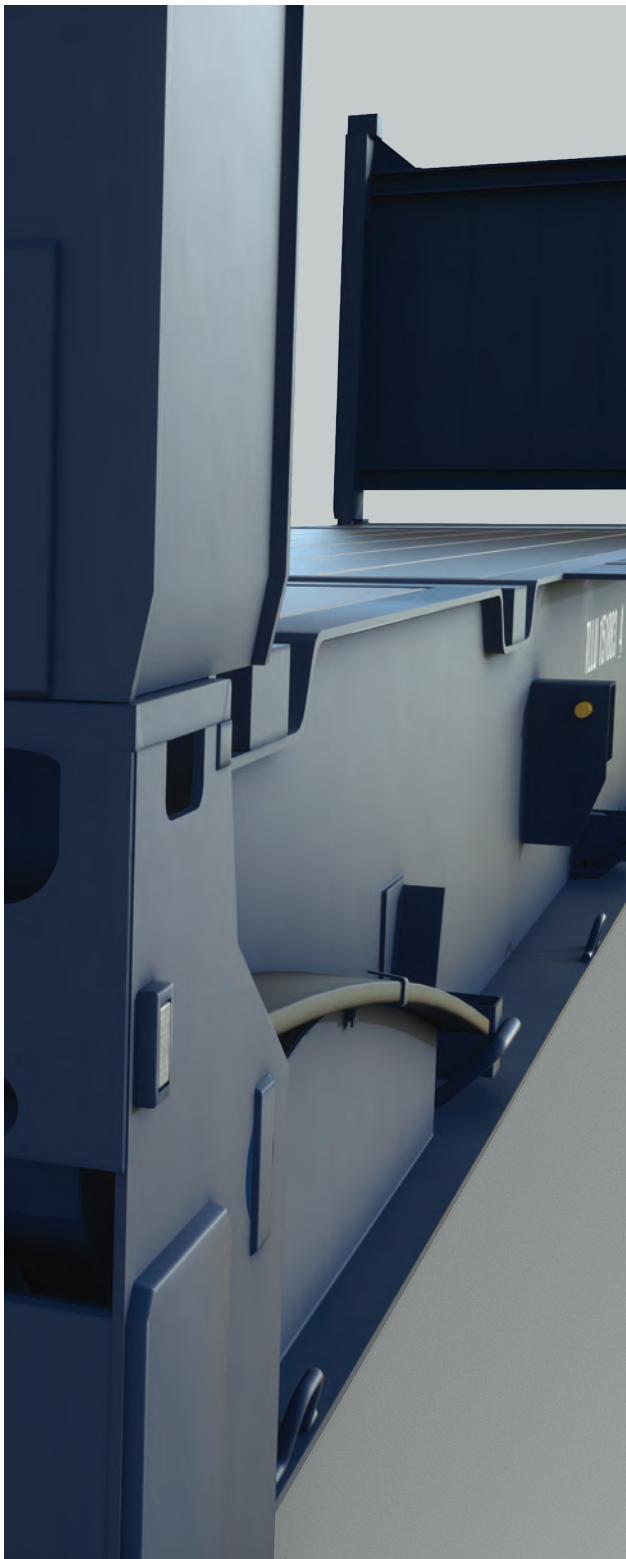
Available via Triton's global network of supply locations.

40ft High Cube Flush Folding Flatracks



FEATURES

- Additional height provides extra capacity for your goods
- Built to carry heavy or out of gauge cargoes
- Heavy duty steel frames and thick plank floors
- Great for specialized shipments of steel, pipes, drums and machinery
- With flush folding end frames to allow for efficient stacking
- Triton's industry leading new production testing and inspection criteria ensures the highest quality container
- Backed up by Triton's global network of supply locations and dedicated leasing and support teams
- Flexible lease terms to meet your company needs



DIMENSIONS (METRIC/IMPERIAL)

EXTERNAL DIMENSIONS

Length (Base bottom casting)	12,192 mm	40' 0.0"
Width (Base bottom casting)	2,438 mm	8' 0.0"
Height (End frame up)	2,896 mm	9' 6.0"
Height (End frame down)	648 mm	2' 1.5"

INTERNAL DIMENSIONS

Length (Between end panels)	12,182 mm	39' 11.6"
Width (Over bottom side rail)	2,374 mm	7' 9.5"
Height (Side rail to top castings)	2,264 mm	7' 5.1"

CAPACITY & WEIGHTS

Max Gross	52,500 kg	115,740 lbs
Payload	47,220 kg	104,100 lbs
Tare	5,280 kg	11,640 lbs

NOTE: The dimensions of containers correspond to ISO standards.

However, due to production tolerances, a difference in measurement is possible.

DISCLAIMER: Every effort is made to ensure this information is accurate, however Triton does not assume any liability for the accuracy of the information and content provided in marketing or information materials, or for the consequences resulting from using the information and content provided. Triton does not guarantee or claim that said information and content is exhaustive. Claims as to the exhaustive nature of said information and content are excluded. The information and content is only provided for advertising purposes and is non-binding. No explicit or implied warranties or guarantees are made. The container displayed only represents a sample of the entire fleet.

The following items are registered or unregistered service marks in the United States and/or foreign jurisdictions pursuant to applicable intellectual property law and are the property of Triton International Limited and its subsidiaries: Triton® and TAL®.



CLASSIFICATION

For Sale: Used

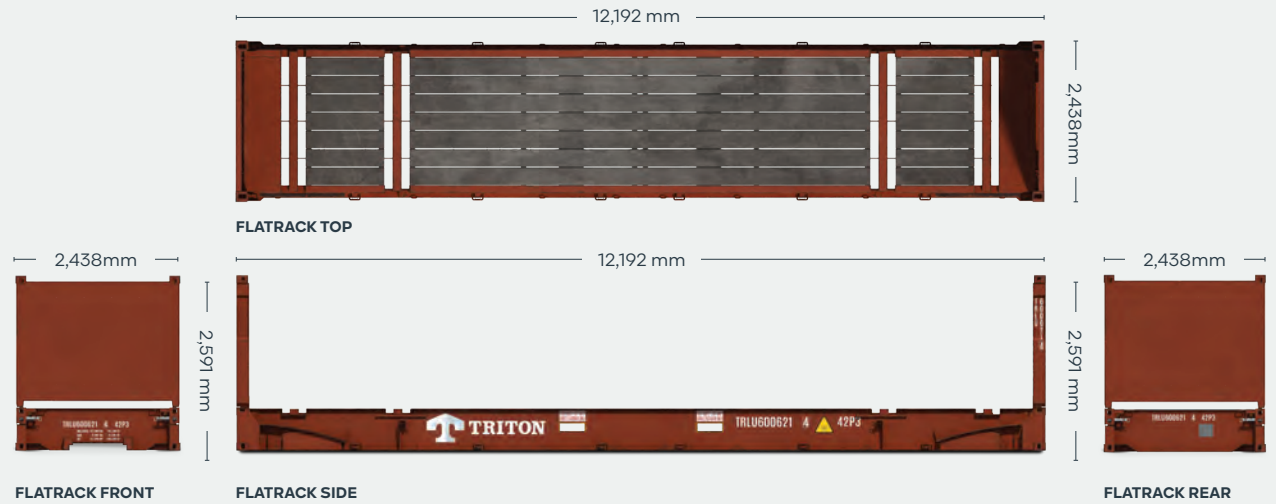
Available via Triton's global network of supply locations.

40ft Used Flush Folding Flatracks



FEATURES

- Built to carry heavy or out of gauge cargoes
- Heavy duty steel frames and thick plank floors
- Backed up by Triton's global network of supply locations and dedicated sales and support teams
- Great for specialized shipments of coiled steel, drums and machinery
- Many with flush folding end frames to allow for efficient stacking
- Available globally



DIMENSIONS (METRIC/IMPERIAL)

EXTERNAL DIMENSIONS

Length (Base bottom casting)	12,192 mm	40' 0.0"
Width (Base bottom casting)	2,438 mm	8' 0.0"
Height (End frame up)	2,591 mm	8' 6.0"
Height (End frame down)	648 mm	2' 1.5"

INTERNAL DIMENSIONS

Length (Between end panels)	12,182 mm	39' 11.6"
Width (Over bottom side rail)	2,374 mm	7' 9.5"
Height (Side rail to top castings)	1,959 mm	6' 5.1"

CAPACITY & WEIGHTS

Max Gross	45,000, 50,000 or 52,500kg 99,210, 110,230 or 115,740 lbs
Payload	39,200 – 47,520kg 86,421 – 104,764 lbs
Tare	4,780 kg – 5,800 kg 10,538 lbs – 12,787 lbs

NOTE: The dimensions of containers correspond to ISO standards.

However, due to production tolerances, a difference in measurement is possible.

DISCLAIMER: Every effort is made to ensure this information is accurate, however Triton does not assume any liability for the accuracy of the information and content provided in marketing or information materials, or for the consequences resulting from using the information and content provided. Triton does not guarantee or claim that said information and content is exhaustive. Claims as to the exhaustive nature of said information and content are excluded. The information and content is only provided for advertising purposes and is non-binding. No explicit or implied warranties or guarantees are made. The container displayed only represents a sample of the entire fleet.

The following items are registered or unregistered service marks in the United States and/or foreign jurisdictions pursuant to applicable intellectual property law and are the property of Triton International Limited and its subsidiaries: Triton® and TAL®.



CLASSIFICATION

For Sale: Used

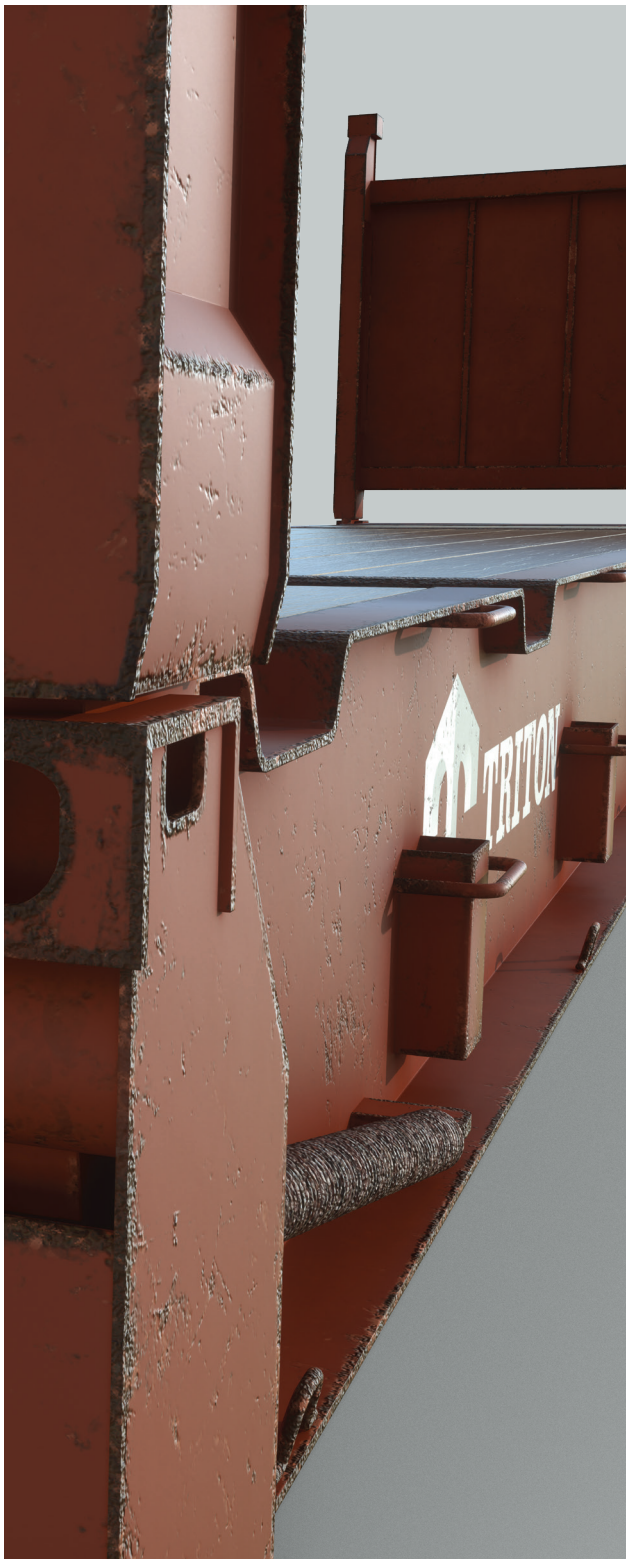
Available via Triton's global network of supply locations.

40ft Used High Cube Flush Folding Flatracks



FEATURES

- Additional height provides extra capacity for your goods
- Built to carry heavy or out of gauge cargoes
- Great for specialized shipments of coiled steel, drums and machinery
- Heavy duty steel frames and thick plank floors
- Many with flush folding end frames to allow for efficient stacking
- Backed up by Triton's global network of supply locations and dedicated sales and support teams
- Available globally



DIMENSIONS (METRIC/IMPERIAL)

EXTERNAL DIMENSIONS

Length (Base bottom casting)	12,192 mm	40' 0.0"
Width (Base bottom casting)	2,438 mm	8' 0.0"
Height (End frame up)	2,896 mm	9' 6.0"
Height (End frame down)	648 mm	2' 1.5"

INTERNAL DIMENSIONS

Length (Between end panels)	12,182 mm	39' 11.6"
Width (Over bottom side rail)	2,374 mm	7' 9.5"
Height (Side rail to top castings)	2,264 mm	7' 5.1"

CAPACITY & WEIGHTS

Max Gross	45,000 – 50,000 kg 99,210 – 110,230 lbs
Payload	39,300 – 47,200 kg 86,640 – 104,060 lbs
Tare	5,300 kg – 5,950 kg 11,680 lbs – 13,120 lbs

NOTE: The dimensions of containers correspond to ISO standards.

However, due to production tolerances, a difference in measurement is possible.

DISCLAIMER: Every effort is made to ensure this information is accurate, however Triton does not assume any liability for the accuracy of the information and content provided in marketing or information materials, or for the consequences resulting from using the information and content provided. Triton does not guarantee or claim that said information and content is exhaustive. Claims as to the exhaustive nature of said information and content are excluded. The information and content is only provided for advertising purposes and is non-binding. No explicit or implied warranties or guarantees are made. The container displayed only represents a sample of the entire fleet.

The following items are registered or unregistered service marks in the United States and/or foreign jurisdictions pursuant to applicable intellectual property law and are the property of Triton International Limited and its subsidiaries: Triton® and TAL®.

HERE. THERE. EVERYWHERE

We supply the world

Triton is the largest lessor of intermodal containers in the world with over 7 million TEU of containers. Our services are available in 89 countries around the globe. So, no matter where you need containers, we'll have them nearby. To find your nearest Triton Container Sales manager visit www.tritoncontainer.com.



**Global inventory of
cargoworthy containers
for lease and sale.**



**Unrivalled container
supply at competitive
prices.**



**Outstanding and
highly responsive
customer services.**



**Global network of 20 offices
and 3 independent agencies
across 16 countries.**



**Equipment
built to the
highest quality.**



**Our size, strength and reliability
make us the go-to supplier of
intermodal shipping containers.**



TRITON

We're the biggest for a reason, contact our friendly experts and experience Triton's world-leading service and cost savings today. Imagine what we can do together.

www.tritoncontainer.com