



TRITON

OUR SECTORS

High-value cargo

We frequently work with project shippers who specialize in moving high-value cargo for their clients.



OUR SECTORS – HIGH-VALUE CARGO

Providing equipment specifically designed for high-value cargo

Our range of equipment can provide the perfect solution for moving or shipping high-value cargo, such as yachts, cars, or helicopters.

High-value cargo can require specialist equipment and additional precautions to ensure shipments arrive at their destination safely. At Triton, we lease and sell a wide range of products designed specifically for this purpose.

Yachts and Boats

Triton Roll Trailers allow for minimal handling, reducing the risk of damage. With capacities between 60-120 tons and lengths ranging from 40ft to 62ft, they can accommodate a vast range of vessels.

Alternatively, Triton Flatracks (with flush folding end walls) and Open Tops (with protective tarpaulins) are also designed to move cargo that cannot fit within the constraints of a standard container. They are available in 20ft and 40ft lengths.

Railcars

Triton 62ft Roll Trailers with rails provide an economical solution to facilitate the safe transportation of railcars and ensure they can be loaded and unloaded efficiently.

Cars and vehicles

Vehicles can be shipped using Roll Trailers, Flatracks, and Dry Containers. The best method is dependent on several factors, including the type of vehicle, its size, and its destination. However, 20ft and 40ft Triton Dry Containers are often more cost-effective for transporting cars than other methods and help ensure the car and its contents are kept safe and secure.

Renewable energy equipment

Equipment used within the renewable energy sector is frequently high-value and oversized. In particular, wind turbines are rapidly becoming larger and therefore more challenging to move.

In particular, key components such as nacelles and turbine tower sections often require specialist equipment, such as Roll Trailers, Flatracks, and Dry Containers.

All of our products undergo routine maintenance and inspections to ensure they consistently perform to our high standards. In addition, our leasing agreements are designed to support our customers' operational and financial objectives.

We also sell used products in a variety of conditions, including "As-Is" and "Cargoworthy" export standards.

PLEASE NOTE: The following pages showcase a small sample of products in the Triton global inventory. We stock a wide range of products for lease and sale in various conditions. Get in touch with your local Triton representative for more information.



20ft Flush Folding Flatracks



CLASSIFICATION

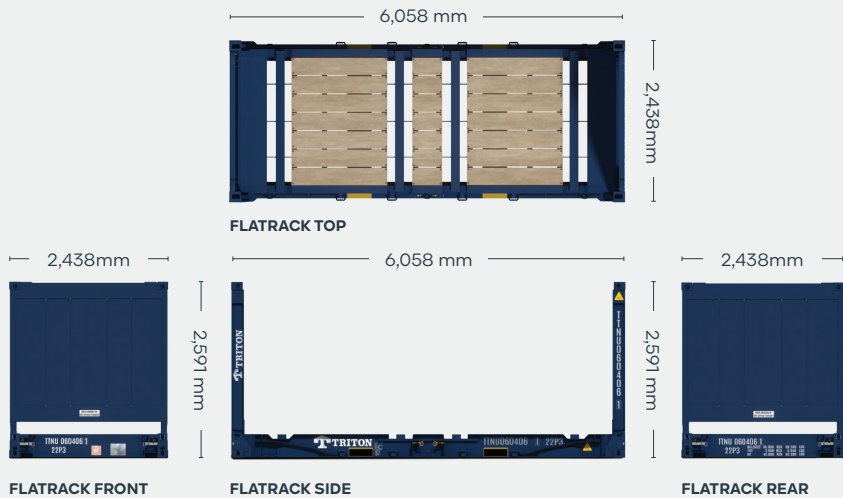
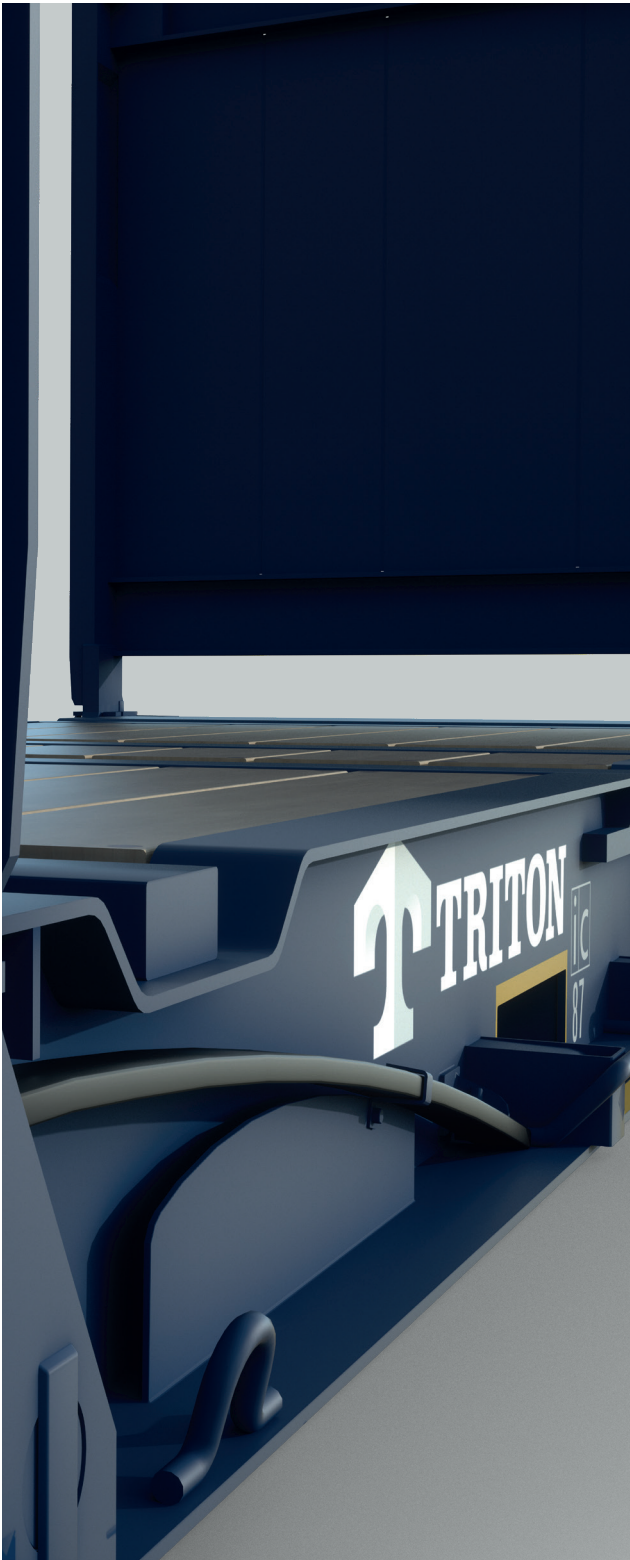
Lease

Available via Triton's global network of supply locations.



FEATURES

- Built to carry heavy or oversized cargoes
- Great for specialized shipments of steel, pipes, drums and machinery
- Forklift pockets for easy empty handling
- Heavy duty steel frames and thick plank floors and lashing rings all around
- With flush folding end frames to allow for efficient stacking and repositioning
- Triton's industry leading new production testing and inspection criteria ensures the highest quality container
- Available in the high demand hub ports
- Backed up by Triton's global network of supply locations and dedicated leasing and support teams
- Flexible lease terms to meet your company needs



DIMENSIONS (METRIC/IMPERIAL)

EXTERNAL DIMENSIONS

Length (Base bottom casting)	6,058 mm	19' 10.5"
Width (Base bottom casting)	2,438 mm	8' 0.0"
Height (End frame up)	2,591 mm	8' 6.0"
Height (End frame down)	370 mm	1' 2.6"

INTERNAL DIMENSIONS

Length (Between end panels)	6,038 mm	19' 9.7"
Width (Over bottom side rail)	2,194 mm	7' 2.4"
Height (Side rail to top castings)	2,233 mm	7' 3.9"

NOTE: The dimensions of containers correspond to ISO standards.
However, due to production tolerances, a difference in measurement is possible.


DISCLAIMER: Every effort is made to ensure this information is accurate, however Triton does not assume any liability for the accuracy of the information and content provided in marketing or information materials, or for the consequences resulting from using the information and content provided. Triton does not guarantee or claim that said information and content is exhaustive. Claims as to the exhaustive nature of said information and content are excluded. The information and content is only provided for advertising purposes and is non-binding. No explicit or implied warranties or guarantees are made. The container displayed only represents a sample of the entire fleet.

The following items are registered or unregistered service marks in the United States and/or foreign jurisdictions pursuant to applicable intellectual property law and are the property of Triton International Limited and its subsidiaries: Triton® and TAL®.

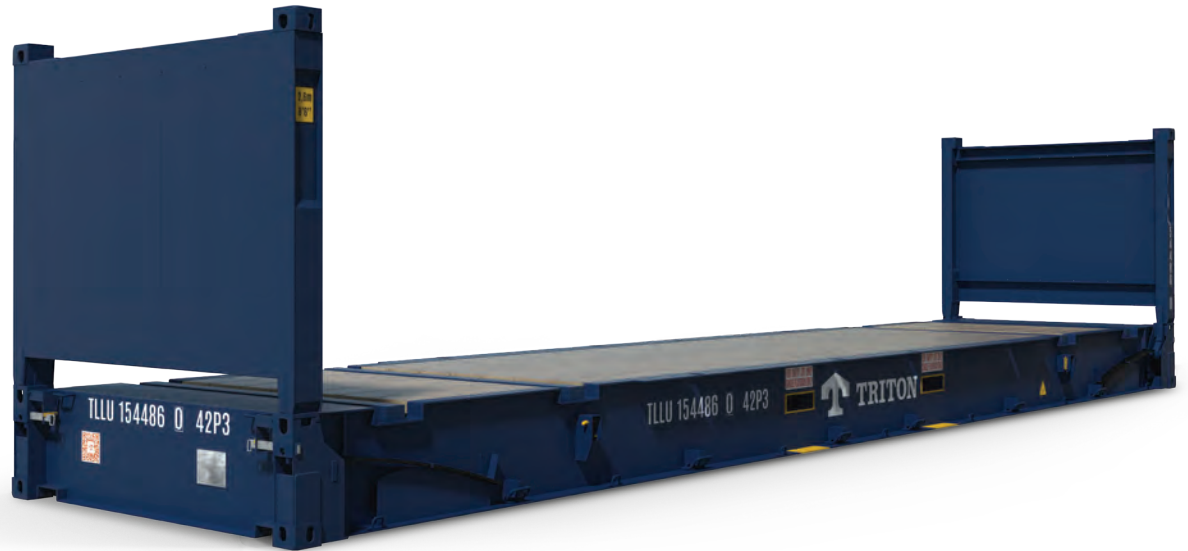
CAPACITY & WEIGHTS

Max Gross	45,000 kg	99,200 lbs
Payload	42,000 kg	92,590 lbs
Tare	3,000 kg	6,640 lbs



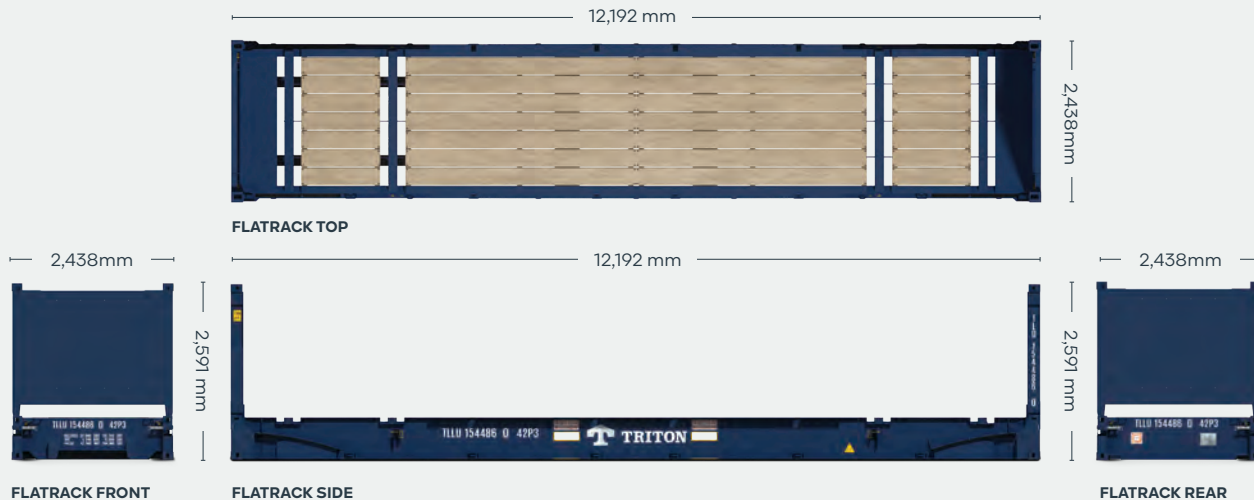

CLASSIFICATION
Lease
Available via Triton's
global network of supply
locations.

40ft Flush Folding Flatracks



FEATURES

- Built to carry heavy or oversized cargoes
- Great for specialized shipments of steel, pipes, drums and machinery
- Forklift pockets for easy empty handling
- Heavy duty steel frames and thick plank floors and lashing rings all around
- With flush folding end frames to allow for efficient stacking and repositioning
- Triton's industry leading new production testing and inspection criteria ensures the highest quality container
- Available in the high demand hub ports
- Backed up by Triton's global network of supply locations and dedicated leasing and support teams
- Flexible lease terms to meet your company needs



DIMENSIONS (METRIC/IMPERIAL)

EXTERNAL DIMENSIONS

Length (Base bottom casting)	12,192 mm	40' 0.0"
Width (Base bottom casting)	2,438 mm	8' 0.0"
Height (End frame up)	2,591 mm	8' 6.0"
Height (End frame down)	648 mm	2' 1.5"

INTERNAL DIMENSIONS

Length (Between end panels)	12,182 mm	39' 11.6"
Width (Over bottom side rail)	2,374 mm	7' 9.5"
Height (Side rail to top castings)	1,959 mm	6' 5.1"

CAPACITY & WEIGHTS

Max Gross	52,500 kg	115,740 lbs
Payload	47,260 kg	104,190 lbs
Tare	5,240 kg	11,550 lbs

NOTE: The dimensions of containers correspond to ISO standards.

However, due to production tolerances, a difference in measurement is possible.

DISCLAIMER: Every effort is made to ensure this information is accurate, however Triton does not assume any liability for the accuracy of the information and content provided in marketing or information materials, or for the consequences resulting from using the information and content provided. Triton does not guarantee or claim that said information and content is exhaustive. Claims as to the exhaustive nature of said information and content are excluded. The information and content is only provided for advertising purposes and is non-binding. No explicit or implied warranties or guarantees are made. The container displayed only represents a sample of the entire fleet.

The following items are registered or unregistered service marks in the United States and/or foreign jurisdictions pursuant to applicable intellectual property law and are the property of Triton International Limited and its subsidiaries: Triton® and TAL®.



CLASSIFICATION

Lease

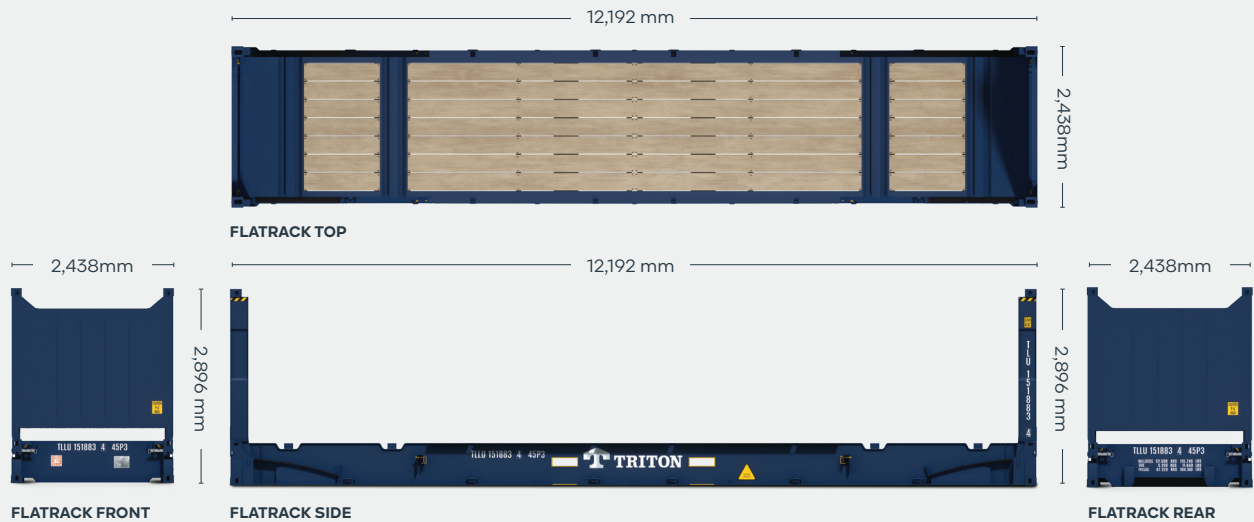
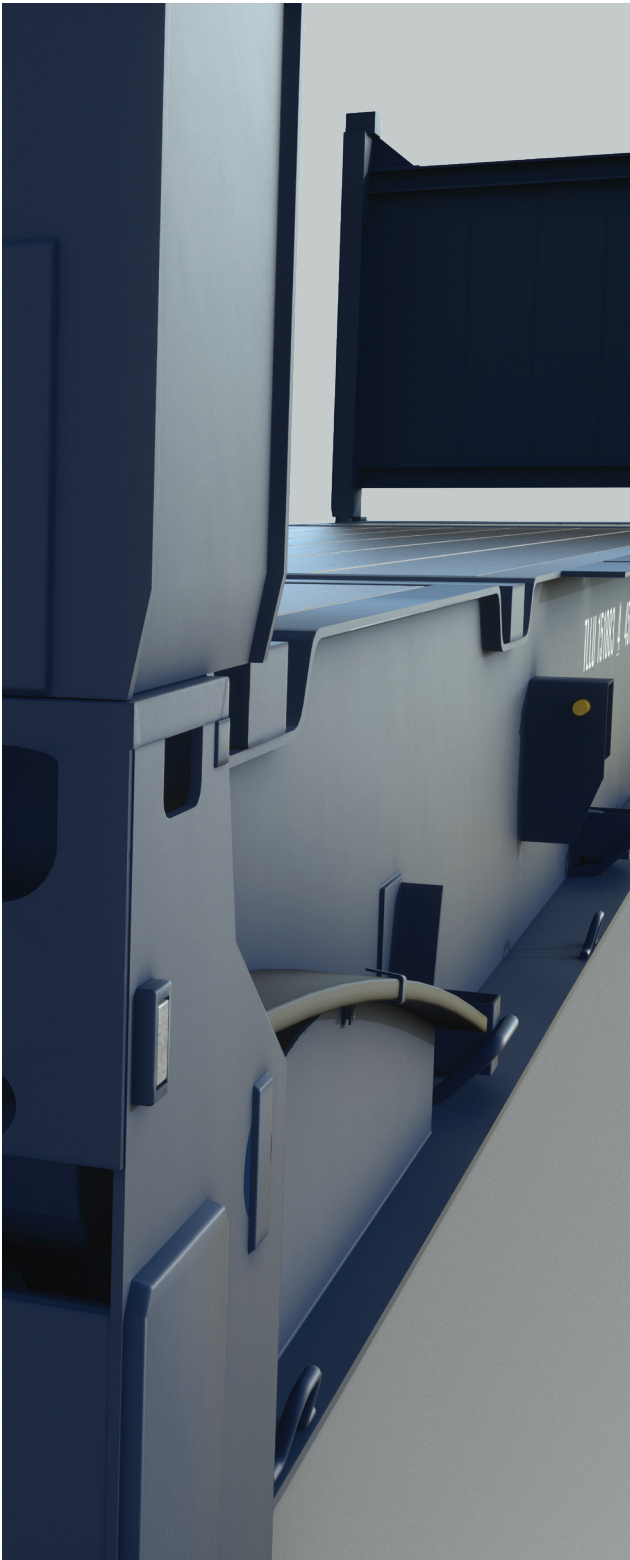
Available via Triton's global network of supply locations.

40ft High Cube Flush Folding Flatracks



FEATURES

- Additional height provides extra capacity for your goods
- Built to carry heavy or out of gauge cargoes
- Heavy duty steel frames and thick plank floors
- Great for specialized shipments of steel, pipes, drums and machinery
- With flush folding end frames to allow for efficient stacking
- Triton's industry leading new production testing and inspection criteria ensures the highest quality container
- Backed up by Triton's global network of supply locations and dedicated leasing and support teams
- Flexible lease terms to meet your company needs



DIMENSIONS (METRIC/IMPERIAL)

EXTERNAL DIMENSIONS

Length (Base bottom casting)	12,192 mm	40' 0.0"
Width (Base bottom casting)	2,438 mm	8' 0.0"
Height (End frame up)	2,896 mm	9' 6.0"
Height (End frame down)	648 mm	2' 1.5"

INTERNAL DIMENSIONS

Length (Between end panels)	12,182 mm	39' 11.6"
Width (Over bottom side rail)	2,374 mm	7' 9.5"
Height (Side rail to top castings)	2,264 mm	7' 5.1"

CAPACITY & WEIGHTS

Max Gross	52,500 kg	115,740 lbs
Payload	47,220 kg	104,100 lbs
Tare	5,280 kg	11,640 lbs

NOTE: The dimensions of containers correspond to ISO standards.

However, due to production tolerances, a difference in measurement is possible.

DISCLAIMER: Every effort is made to ensure this information is accurate, however Triton does not assume any liability for the accuracy of the information and content provided in marketing or information materials, or for the consequences resulting from using the information and content provided. Triton does not guarantee or claim that said information and content is exhaustive. Claims as to the exhaustive nature of said information and content are excluded. The information and content is only provided for advertising purposes and is non-binding. No explicit or implied warranties or guarantees are made. The container displayed only represents a sample of the entire fleet.

The following items are registered or unregistered service marks in the United States and/or foreign jurisdictions pursuant to applicable intellectual property law and are the property of Triton International Limited and its subsidiaries: Triton® and TAL®.



CLASSIFICATION

For Sale: Used

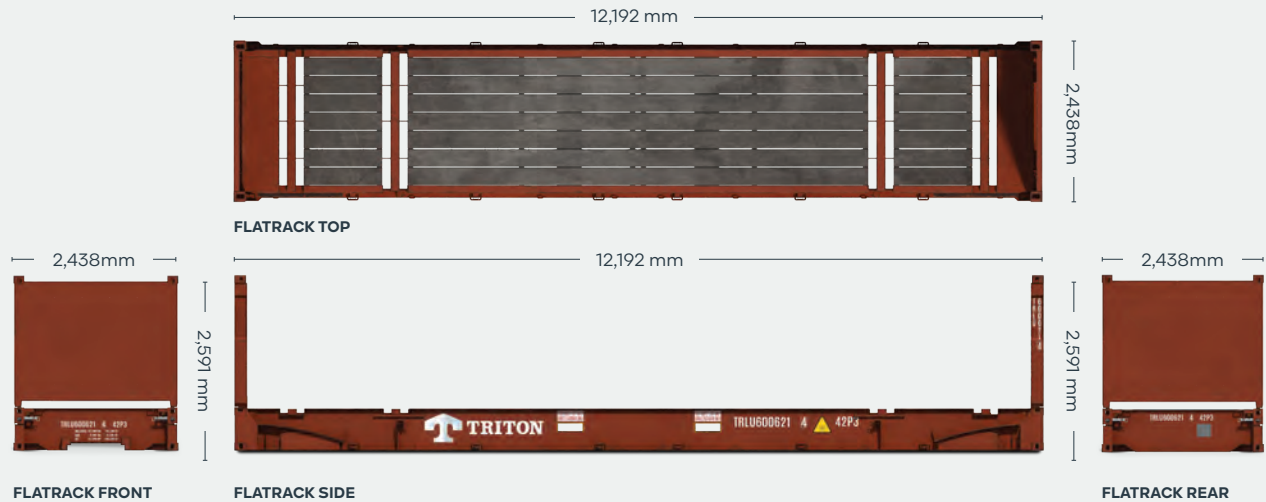
Available via Triton's global network of supply locations.

40ft Used Flush Folding Flatracks



FEATURES

- Built to carry heavy or out of gauge cargoes
- Great for specialized shipments of coiled steel, drums and machinery
- Heavy duty steel frames and thick plank floors
- Many with flush folding end frames to allow for efficient stacking
- Backed up by Triton's global network of supply locations and dedicated sales and support teams
- Available globally



DIMENSIONS (METRIC/IMPERIAL)

EXTERNAL DIMENSIONS

Length (Base bottom casting)	12,192 mm	40' 0.0"
Width (Base bottom casting)	2,438 mm	8' 0.0"
Height (End frame up)	2,591 mm	8' 6.0"
Height (End frame down)	648 mm	2' 1.5"

INTERNAL DIMENSIONS

Length (Between end panels)	12,182 mm	39' 11.6"
Width (Over bottom side rail)	2,374 mm	7' 9.5"
Height (Side rail to top castings)	1,959 mm	6' 5.1"

CAPACITY & WEIGHTS

Max Gross	45,000, 50,000 or 52,500kg 99,210, 110,230 or 115,740 lbs
Payload	39,200 – 47,520kg 86,421 – 104,764 lbs
Tare	4,780 kg – 5,800 kg 10,538 lbs – 12,787 lbs

NOTE: The dimensions of containers correspond to ISO standards.

However, due to production tolerances, a difference in measurement is possible.

DISCLAIMER: Every effort is made to ensure this information is accurate, however Triton does not assume any liability for the accuracy of the information and content provided in marketing or information materials, or for the consequences resulting from using the information and content provided. Triton does not guarantee or claim that said information and content is exhaustive. Claims as to the exhaustive nature of said information and content are excluded. The information and content is only provided for advertising purposes and is non-binding. No explicit or implied warranties or guarantees are made. The container displayed only represents a sample of the entire fleet.

The following items are registered or unregistered service marks in the United States and/or foreign jurisdictions pursuant to applicable intellectual property law and are the property of Triton International Limited and its subsidiaries: Triton® and TAL®.



CLASSIFICATION

Lease

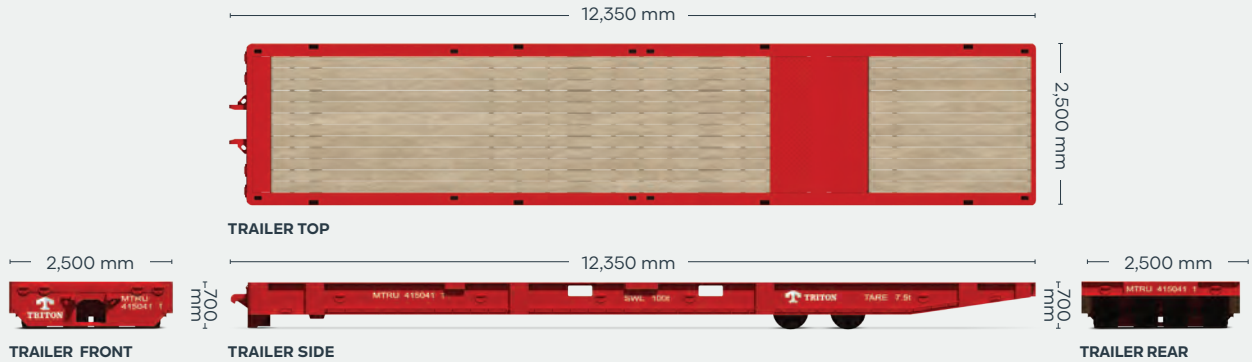
Available via Triton's global network of supply locations.

40ft Roll Trailer



FEATURES

- Available in 40ft length
- Tonnage rating from 60 to 120 tons
- Payload is specifically designed for the movement of products such as high-value cargo such as yachts, rail carriages, steel and cables.
- Triton's industry leading new production testing and inspection criteria ensures the highest quality unit.
- Available globally.
- Flexible lease terms to meet your company needs.
- Backed up by Triton's global network of supply locations and dedicated leasing and support teams.



DIMENSIONS (METRIC/IMPERIAL)

EXTERNAL DIMENSIONS

Length	12,350 mm	40' 6.2"
Width	2,500 mm	8' 2.4"
Height	700 mm	2' 3.6"
Over the wheel set	730 mm	2' 4.7"
Ground clearance	218 mm	0' 8.6"

CAPACITY & WEIGHTS

Capacity	100 tons
Tare	7.5 tons

DISCLAIMER: Every effort is made to ensure this information is accurate, however Triton does not assume any liability for the accuracy of the information and content provided in marketing or information materials, or for the consequences resulting from using the information and content provided. Triton does not guarantee or claim that said information and content is exhaustive. Claims as to the exhaustive nature of said information and content are excluded. The information and content is only provided for advertising purposes and is non-binding. No explicit or implied warranties or guarantees are made. The container displayed only represents a sample of the entire fleet.

The following items are registered or unregistered service marks in the United States and/or foreign jurisdictions pursuant to applicable intellectual property law and are the property of Triton International Limited and its subsidiaries: Triton® and TAL®.

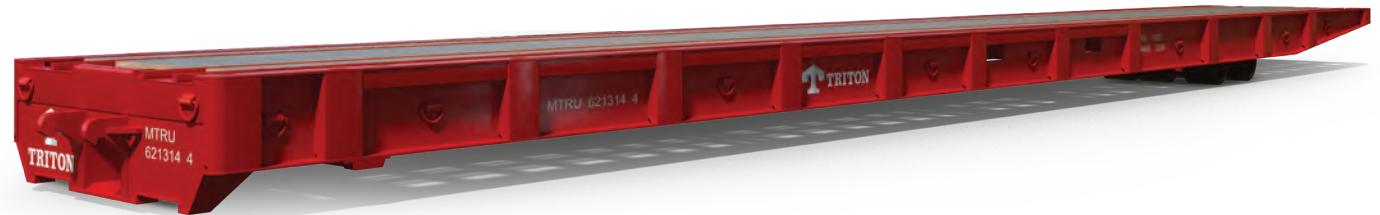


CLASSIFICATION

Lease

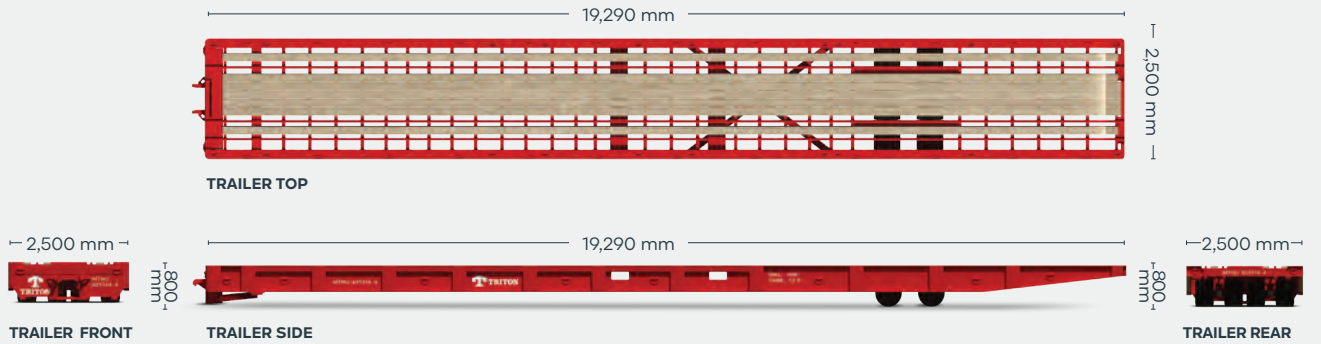
Available via Triton's global network of supply locations.

62ft Roll Trailer



FEATURES

- Available in 62ft length
- Supplied with or without 3 rails
- Designed to handle 2 track gauges: Standard Gauge (1,435mm track) and Three Foot Six Inch Gauge (1,067mm track)
- Tonnage rating from 90 to 100 tons
- Payload is specifically designed for the movement of products such as rail-cars and over length cargo
- Triton's industry leading new production testing and inspection criteria ensures the highest quality unit
- Backed up by Triton's global network of supply locations and dedicated leasing and support teams
- Available globally
- Flexible lease terms to meet your company needs



DIMENSIONS (METRIC/IMPERIAL)

EXTERNAL DIMENSIONS

Length	19,290 mm	63' 3.4"
Width	2,500 mm	8' 2.4"
Height	800 mm	2' 7.5"
Over the wheel set	850 mm	2' 9.4"
Ground clearance	282 mm	11.1"

CAPACITY & WEIGHTS

Capacity (with 3 rails)	100 tons
Tare (with 3 rails)	12.9 tons

DISCLAIMER: Every effort is made to ensure this information is accurate, however Triton does not assume any liability for the accuracy of the information and content provided in marketing or information materials, or for the consequences resulting from using the information and content provided. Triton does not guarantee or claim that said information and content is exhaustive. Claims as to the exhaustive nature of said information and content are excluded. The information and content is only provided for advertising purposes and is non-binding. No explicit or implied warranties or guarantees are made. The container displayed only represents a sample of the entire fleet.

The following items are registered or unregistered service marks in the United States and/or foreign jurisdictions pursuant to applicable intellectual property law and are the property of Triton International Limited and its subsidiaries: Triton® and TAL®.

HERE. THERE. EVERYWHERE

We supply the world

Triton is the largest lessor of intermodal containers in the world with over 7 million TEU of containers. Our services are available in 89 countries around the globe. So, no matter where you need containers, we'll have them nearby. To find your nearest Triton Container Sales manager visit www.tritoncontainer.com.



**Global inventory of
cargoworthy containers
for lease and sale.**



**Unrivalled container
supply at competitive
prices.**



**Outstanding and
highly responsive
customer services.**



**Global network of 20 offices
and 3 independent agencies
across 16 countries.**



**Equipment
built to the
highest quality.**



**Our size, strength and reliability
make us the go-to supplier of
intermodal shipping containers.**



We're the biggest for a reason, contact our friendly experts and experience Triton's world-leading service and cost savings today. Imagine what we can do together.

www.tritoncontainer.com