



TRITON

OUR SECTORS

Storage

Triton Containers can be used to securely store equipment, excess inventory and more for short or long periods.



OUR SECTORS – STORAGE

Store items with confidence

Once retired from marine use and purchased by our customers, Triton ISO Cargo Containers can be painted, refurbished, and when required, modified for service in the portable storage industry.

Containers where our customers need them

We are a valued partner to companies operating within the portable and domestic storage industry. Our containers offer a cost-effective, durable, secure, on-site alternative to traditional brick and mortar storage facilities. They are available in a range of conditions to meet our customers' unique storage needs and budgets, including "Cargoworthy Premium", "Cargoworthy Standard", "IICL New", "IICL Used", and "As-Is".

The largest global seller of used containers

Our extensive global operating infrastructure enables us to deliver unrivaled container supply capabilities to our customers; our scale allows us to operate with the lowest cost ratios in the industry.

Safe and secure storage solutions

Container storage is a valuable asset to many businesses, from manufacturing to construction, and the retail sector. Triton 20ft and 40ft Double Door Containers, also commonly known as "Tunnel Containers", are increasingly used for this purpose. They have two secure points of access, as such, it is possible to divide them into two separate storage areas using partitions. This feature often makes them more space and cost-effective than purchasing individual standard units of the same capacity.

Other popular Triton products include Tank Containers, Refrigerated Containers, and other Dry Containers with standard lengths of 8ft, 10ft, and 45ft.

The NPSA

Triton Container Sales is a proud charter member of the National Portable Storage Association in North America (NPSA). NPSA is a non-profit membership association dedicated to the advancement of the portable storage industry.

PLEASE NOTE: The following pages showcase a small sample of products in the Triton global inventory. We stock a wide range of products for lease and sale in various conditions. Get in touch with your local Triton representative for more information.



8ft Dry Container



CLASSIFICATION

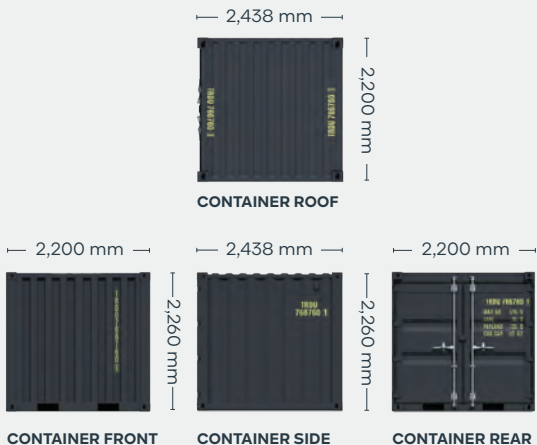
For Sale: New

Available via Triton's global network of supply locations.



FEATURES

- Manufactured with rust resistant corten steel
- Secure and weatherproof, with vents to allow airflow
- Incredibly versatile
- Ideal for smaller domestic applications such as the construction industry
- Superior paint systems
- Advance orders in your preferred color (minimum volume required)
- Great options including 80 micron floor coating, lock boxes, waist high door locking handles
- Triton's industry leading new production testing and inspection criteria ensures the highest quality container
- Minimize shipping costs by loading an 8' unit inside of a 10' unit
- Moved from factory to most major ports in the world
- Backed up by Triton's global network of supply locations and dedicated sales and support teams
- Available globally



DIMENSIONS (METRIC/IMPERIAL)

EXTERNAL DIMENSIONS

Length	2,200 mm	7' 2.6"
Width	2,438 mm	8' 0.0"
Height	2,260 mm	7' 5.0"

INTERNAL DIMENSIONS

Length	2,112 mm	6' 11.1"
Width	2,287 mm	7' 6.0"
Height	2,062 mm	6' 9.2"

DOOR OPENING

Width	2,106 mm	6' 10.9"
Height	1,949 mm	6' 4.7"

CAPACITY & WEIGHTS

Inside Cubic Capacity	9.96 m ³	351.7 ft ³
Max Gross	6,000 kg	13,230 lbs
Payload	5,150 kg	11,350 lbs
Tare	850 kg	1,880 lbs

NOTE: The dimensions and door openings of all containers correspond to ISO standards. However, due to production tolerances, a difference in measurement is possible.

DISCLAIMER: Every effort is made to ensure this information is accurate, however Triton does not assume any liability for the accuracy of the information and content provided in marketing or information materials, or for the consequences resulting from using the information and content provided. Triton does not guarantee or claim that said information and content is exhaustive. Claims as to the exhaustive nature of said information and content are excluded. The information and content is only provided for advertising purposes and is non-binding. No explicit or implied warranties or guarantees are made. The container displayed only represents a sample of the entire fleet.

The following items are registered or unregistered service marks in the United States and/or foreign jurisdictions pursuant to applicable intellectual property law and are the property of Triton International Limited and its subsidiaries: Triton® and TAL®.



10ft Dry Container



CLASSIFICATION

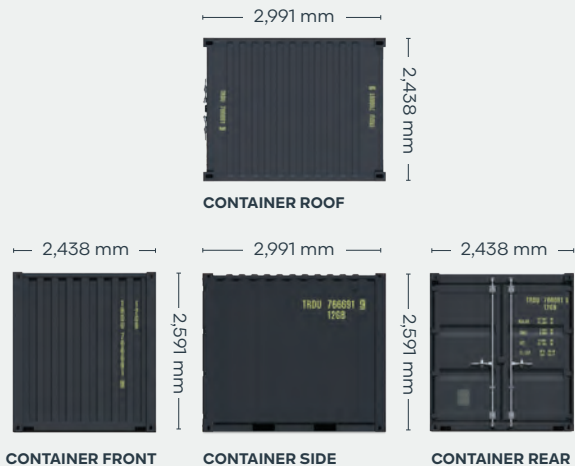
For Sale: New

Available via Triton's global network of supply locations.



FEATURES

- Manufactured with rust resistant corten steel
- Secure and weatherproof, with vents to allow airflow
- Superior paint systems
- Incredibly versatile and suitable for customers to modify into a wide range of applications
- Advance orders in your preferred color (minimum volume required)
- Ideal for smaller domestic applications such as the construction industry
- Great options including 80 micron floor coating, lock boxes, waist high door locking handles
- Triton's industry leading new production testing and inspection criteria ensures the highest quality container
- Shipping costs can be minimized by loading 2x10' units joined together (using approved ISO certification method)
- Moved from factory to most major ports in the world
- Backed up by Triton's global network of supply locations and dedicated sales and support teams
- Available globally



DIMENSIONS (METRIC/IMPERIAL)

EXTERNAL DIMENSIONS

Length	2,991 mm	9' 9.8"
Width	2,438 mm	8' 0.0"
Height	2,591 mm	8' 6.0"

INTERNAL DIMENSIONS

Length	2,831 mm	9' 3.5"
Width	2,352 mm	7' 8.6"
Height	2,393 mm	7' 10.2"

DOOR OPENING

Width	2,338 mm	7' 8.0"
Height	2,280 mm	7' 5.8"

CAPACITY & WEIGHTS

Inside Cubic Capacity	15.9 m ³	563 ft ³
Max Gross	10,160 kg	22,400 lbs
Payload	8,960 kg	19,755 lbs
Tare	1,200 kg	2,645 lbs

NOTE: The dimensions and door openings of all containers correspond to ISO standards. However, due to production tolerances, a difference in measurement is possible.

DISCLAIMER: Every effort is made to ensure this information is accurate, however Triton does not assume any liability for the accuracy of the information and content provided in marketing or information materials, or for the consequences resulting from using the information and content provided. Triton does not guarantee or claim that said information and content is exhaustive. Claims as to the exhaustive nature of said information and content are excluded. The information and content is only provided for advertising purposes and is non-binding. No explicit or implied warranties or guarantees are made. The container displayed only represents a sample of the entire fleet.

The following items are registered or unregistered service marks in the United States and/or foreign jurisdictions pursuant to applicable intellectual property law and are the property of Triton International Limited and its subsidiaries: Triton® and TAL®.



20ft Double Door Dry Container



CLASSIFICATION

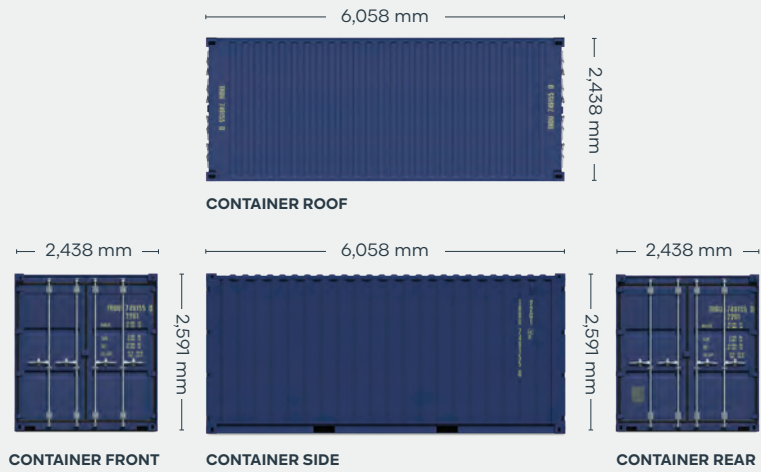
For Sale: New

Available via Triton's global network of supply locations.



FEATURES

- Cargo doors on both ends provide easy access for stocking and retrieving stored goods
- Manufactured with rust resistant corten steel
- Secure and weatherproof, with vents to allow airflow
- Superior paint systems
- Resistant to damage and corrosion
- Advance orders in your preferred color (minimum volume required)
- Great options including 80 micron floor coating, lock boxes, waist high door locking handles
- Triton's industry leading new production testing and inspection criteria ensures the highest quality container
- Incredibly versatile and suitable for customers to modify into a wide range of applications
- Backed up by Triton's global network of supply locations and dedicated sales and support teams
- Moved from factory to most major ports in the world
- Available globally



DIMENSIONS (METRIC/IMPERIAL)

EXTERNAL DIMENSIONS

Length	6,058 mm	19' 10.5"
Width	2,438 mm	8' 0.0"
Height	2,591 mm	8' 6.0"

INTERNAL DIMENSIONS

Length	5,844 mm	19' 2.1"
Width	2,352 mm	7' 8.6"
Height	2,393 mm	7' 10.2"

DOOR OPENING

Width	2,343 mm	7' 8.2"
Height	2,280 mm	7' 5.8"

CAPACITY & WEIGHTS

Inside Cubic Capacity	32.9 m ³	1162 ft ³
Max Gross	30,480 kg	67,200 lbs
Payload	28,280 kg	62,350 lbs
Tare	2,200 kg	4,850 lbs

NOTE: The dimensions and door openings of all containers correspond to ISO standards. However, due to production tolerances, a difference in measurement is possible.

DISCLAIMER: Every effort is made to ensure this information is accurate, however Triton does not assume any liability for the accuracy of the information and content provided in marketing or information materials, or for the consequences resulting from using the information and content provided. Triton does not guarantee or claim that said information and content is exhaustive. Claims as to the exhaustive nature of said information and content are excluded. The information and content is only provided for advertising purposes and is non-binding. No explicit or implied warranties or guarantees are made. The container displayed only represents a sample of the entire fleet.

The following items are registered or unregistered service marks in the United States and/or foreign jurisdictions pursuant to applicable intellectual property law and are the property of Triton International Limited and its subsidiaries: Triton® and TAL®.



20ft Duocon Container



CLASSIFICATION

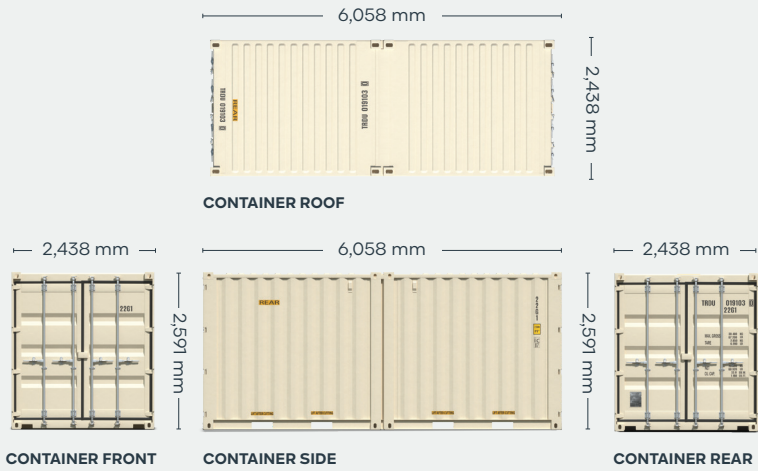
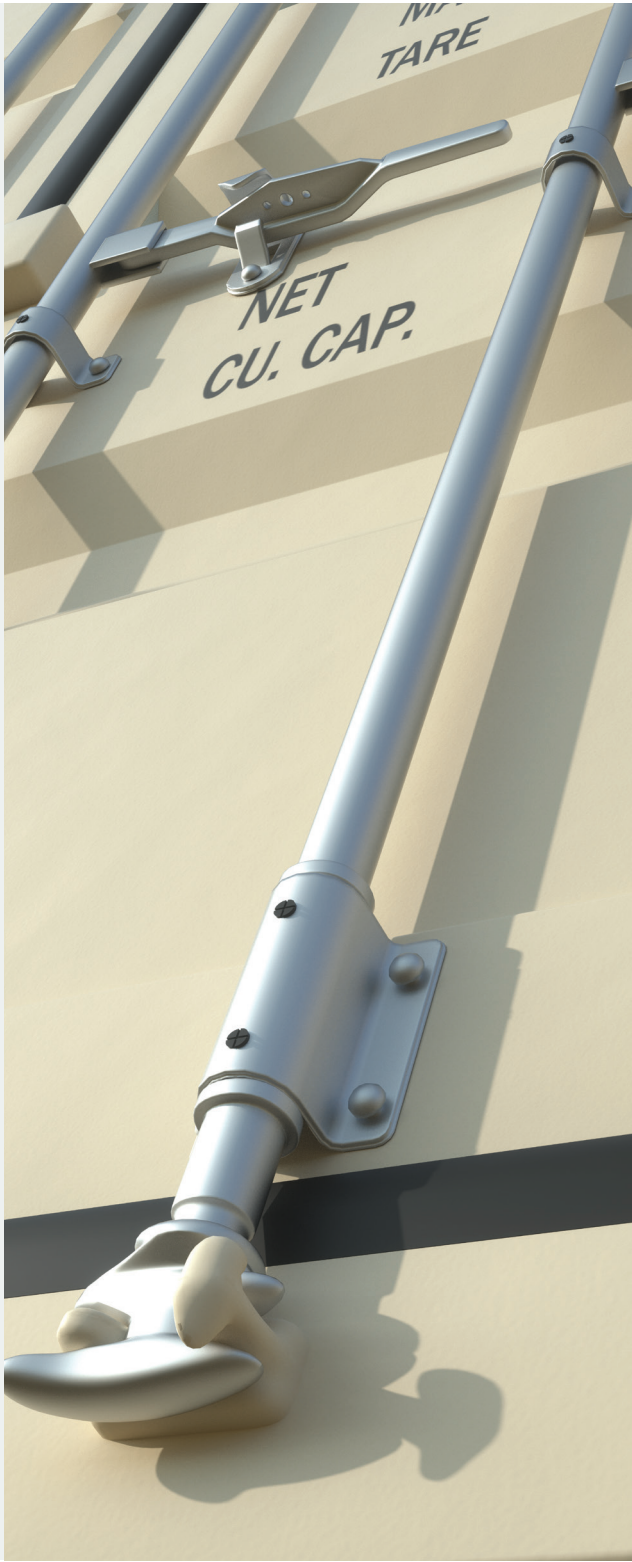
For Sale: New

Available via Triton's global network of supply locations.



FEATURES

- Provides significant freight cost savings
- Cargo doors on both ends provide easy access for stocking and retrieving stored goods
- Manufactured with rust resistant corten steel
- Superior paint systems
- Secure and weatherproof, with vents to allow airflow
- Great options including internal lashing loops, forklift pockets, lock boxes, and waist high door locking handles
- Triton's industry leading new production testing and inspection criteria ensures the highest quality container
- Incredibly versatile and suitable for customers to modify into a wide range of applications
- Backed up by Triton's global network of supply locations and dedicated sales and support teams
- Available across the US



DIMENSIONS (METRIC/IMPERIAL)

EXTERNAL DIMENSIONS

Length	6,058 mm	19' 10.5"
Width	2,438 mm	8' 0.0"
Height	2,591 mm	8' 6.0"

INTERNAL DIMENSIONS

Length	5,844 mm	19' 2.1"
Width	2,352 mm	7' 8.6"
Height	2,393 mm	7' 10.2"

DOOR OPENING

Width	2,343 mm	7' 8.2"
Height	2,280 mm	7' 5.8"

CAPACITY & WEIGHTS

Inside Cubic Capacity	32.9 m ³	1162 ft ³
Max Gross	30,480 kg	67,200 lbs
Max Payload	27,650 kg	60,960 lbs
Tare Weight	2,830 kg	6,240 lbs

NOTE: The dimensions and door openings of all containers correspond to ISO standards. However, due to production tolerances, a difference in measurement is possible.

DISCLAIMER: Every effort is made to ensure this information is accurate, however Triton does not assume any liability for the accuracy of the information and content provided in marketing or information materials, or for the consequences resulting from using the information and content provided. Triton does not guarantee or claim that said information and content is exhaustive. Claims as to the exhaustive nature of said information and content are excluded. The information and content is only provided for advertising purposes and is non-binding. No explicit or implied warranties or guarantees are made. The container displayed only represents a sample of the entire fleet.

The following items are registered or unregistered service marks in the United States and/or foreign jurisdictions pursuant to applicable intellectual property law and are the property of Triton International Limited and its subsidiaries: Triton® and TAL®.



CLASSIFICATION

For Sale: New

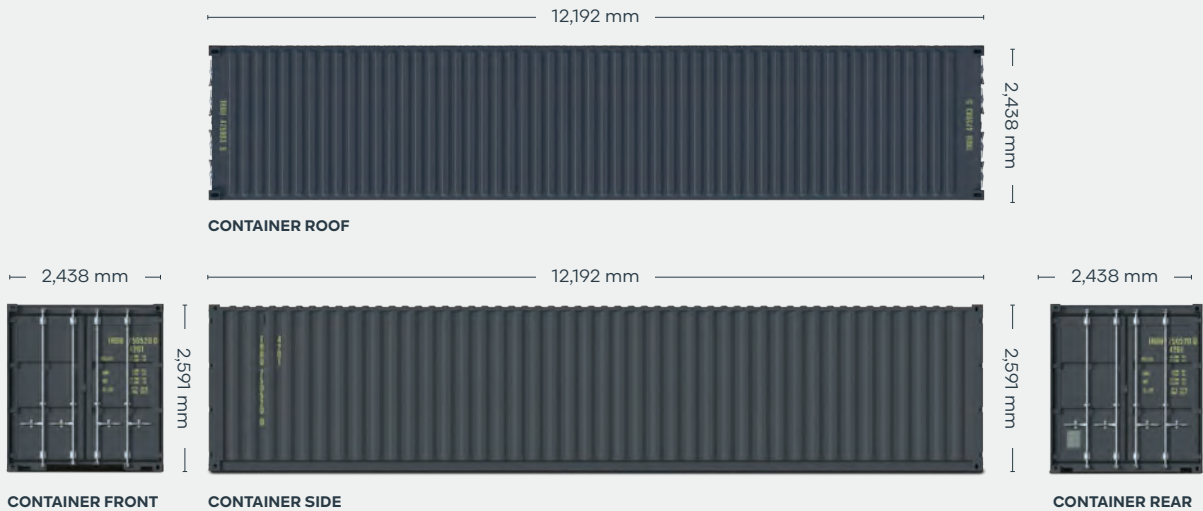
Available via Triton's global network of supply locations.

40ft Double Door Dry Container



FEATURES

- Cargo doors on both ends provide easy access for stocking and retrieving stored goods
- Manufactured with rust resistant corten steel
- Secure and weatherproof, with vents to allow airflow
- Superior paint systems
- Resistant to damage and corrosion
- Advance orders in your preferred color (minimum volume required)
- Great options including 80 micron floor coating, lock boxes, waist high door locking handles
- Triton's industry leading new production testing and inspection criteria ensures the highest quality container
- Incredibly versatile and suitable for customers to modify into a wide range of applications
- Moved from factory to most major ports in the world
- Backed up by Triton's global network of supply locations and dedicated sales and support teams
- Available globally



DIMENSIONS (METRIC/IMPERIAL)

EXTERNAL DIMENSIONS

Length	12,192 mm	40' 0.0"
Width	2,438 mm	8' 0.0"
Height	2,591 mm	8' 6.0"

INTERNAL DIMENSIONS

Length	11,978 mm	39' 3.6"
Width	2,352 mm	7' 8.6"
Height	2,393 mm	7' 10.2"

DOOR OPENING

Width	2,343 mm	7' 8.2"
Height	2,280 mm	7' 5.8"

CAPACITY & WEIGHTS

Inside Cubic Capacity	67.4 m ³	2380 ft ³
Max Gross	30,480 kg	67,200 lbs
Payload	26,900 kg	59,310 lbs
Tare	3,580 kg	7,890 lbs

NOTE: The dimensions and door openings of all containers correspond to ISO standards. However, due to production tolerances, a difference in measurement is possible.

DISCLAIMER: Every effort is made to ensure this information is accurate, however Triton does not assume any liability for the accuracy of the information and content provided in marketing or information materials, or for the consequences resulting from using the information and content provided. Triton does not guarantee or claim that said information and content is exhaustive. Claims as to the exhaustive nature of said information and content are excluded. The information and content is only provided for advertising purposes and is non-binding. No explicit or implied warranties or guarantees are made. The container displayed only represents a sample of the entire fleet.

The following items are registered or unregistered service marks in the United States and/or foreign jurisdictions pursuant to applicable intellectual property law and are the property of Triton International Limited and its subsidiaries: Triton® and TAL®.



CLASSIFICATION

For Sale: New

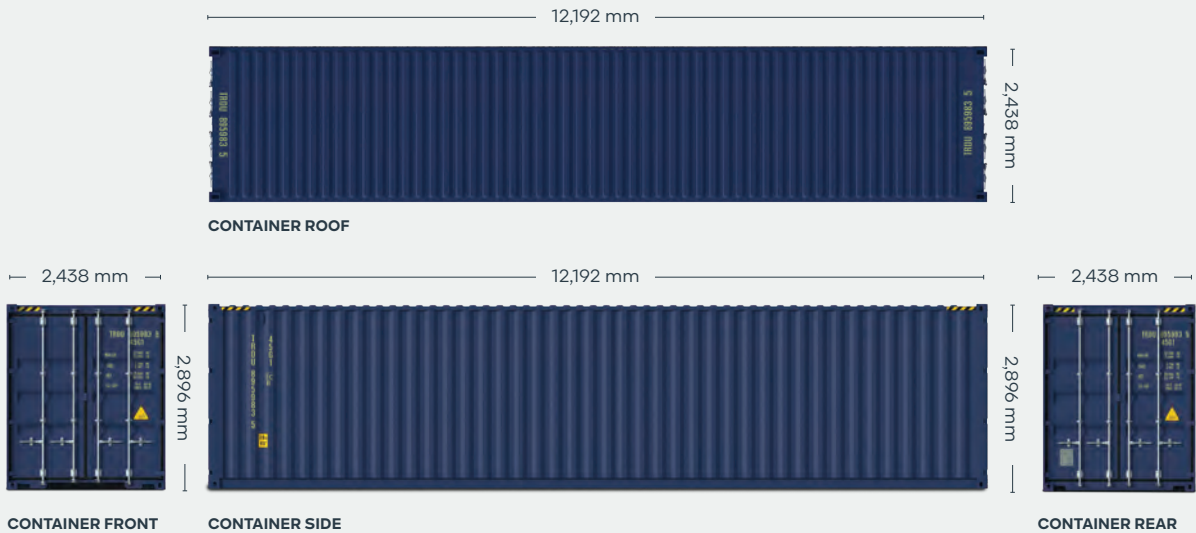
Available via Triton's global network of supply locations.

40ft High Cube Double Door Dry Container



FEATURES

- Additional height provides extra internal cubic capacity, which means greater interior stacking capacity for your goods
- Cargo doors on both ends provide easy access for stocking and retrieving stored goods
- Manufactured with rust resistant corten steel
- Secure and weatherproof, with vents to allow airflow
- Resistant to damage and corrosion
- Great options including 80 micron floor coating, lock boxes, waist high door locking handles
- Superior paint systems
- Advance orders in your preferred color (minimum volume required)
- Triton's industry leading new production testing and inspection criteria ensures the highest quality container
- Moved from factory to most major ports in the world
- Incredibly versatile and suitable for customers to modify into a wide range of applications
- Backed up by Triton's global network of supply locations and dedicated sales and support teams
- Available globally



DIMENSIONS (METRIC/IMPERIAL)

EXTERNAL DIMENSIONS

Length	12,192 mm	40' 0.0"
Width	2,438 mm	8' 0.0"
Height	2,896 mm	9' 6.0"

INTERNAL DIMENSIONS

Length	11,978 mm	39' 3.6"
Width	2,352 mm	7' 8.6"
Height	2,698 mm	8' 10.2"

DOOR OPENING

Width	2,343 mm	7' 8.2"
Height	2,585 mm	8' 5.7"

CAPACITY & WEIGHTS

Inside Cubic Capacity	76.0 m ³	2684 ft ³
Max Gross	30,480 kg	67,200 lbs
Payload	26,730 kg	58,930 lbs
Tare	3,750 kg	8,270 lbs

NOTE: The dimensions and door openings of all containers correspond to ISO standards. However, due to production tolerances, a difference in measurement is possible.

DISCLAIMER: Every effort is made to ensure this information is accurate, however Triton does not assume any liability for the accuracy of the information and content provided in marketing or information materials, or for the consequences resulting from using the information and content provided. Triton does not guarantee or claim that said information and content is exhaustive. Claims as to the exhaustive nature of said information and content are excluded. The information and content is only provided for advertising purposes and is non-binding. No explicit or implied warranties or guarantees are made. The container displayed only represents a sample of the entire fleet.

The following items are registered or unregistered service marks in the United States and/or foreign jurisdictions pursuant to applicable intellectual property law and are the property of Triton International Limited and its subsidiaries: Triton® and TAL®.



20ft Used Dry Container



CLASSIFICATION

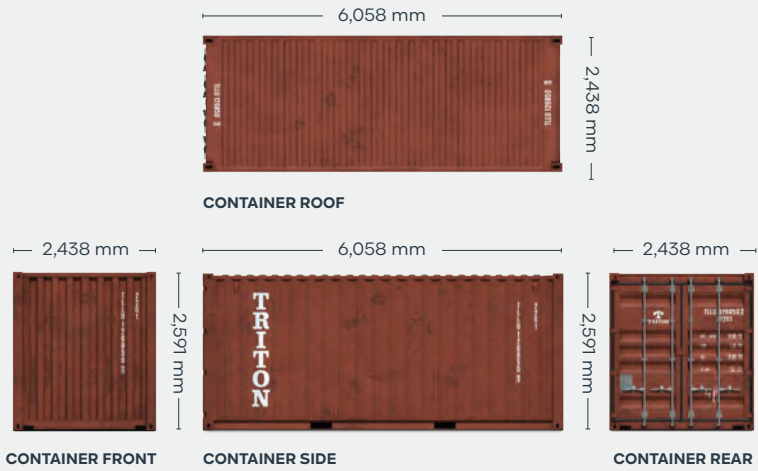
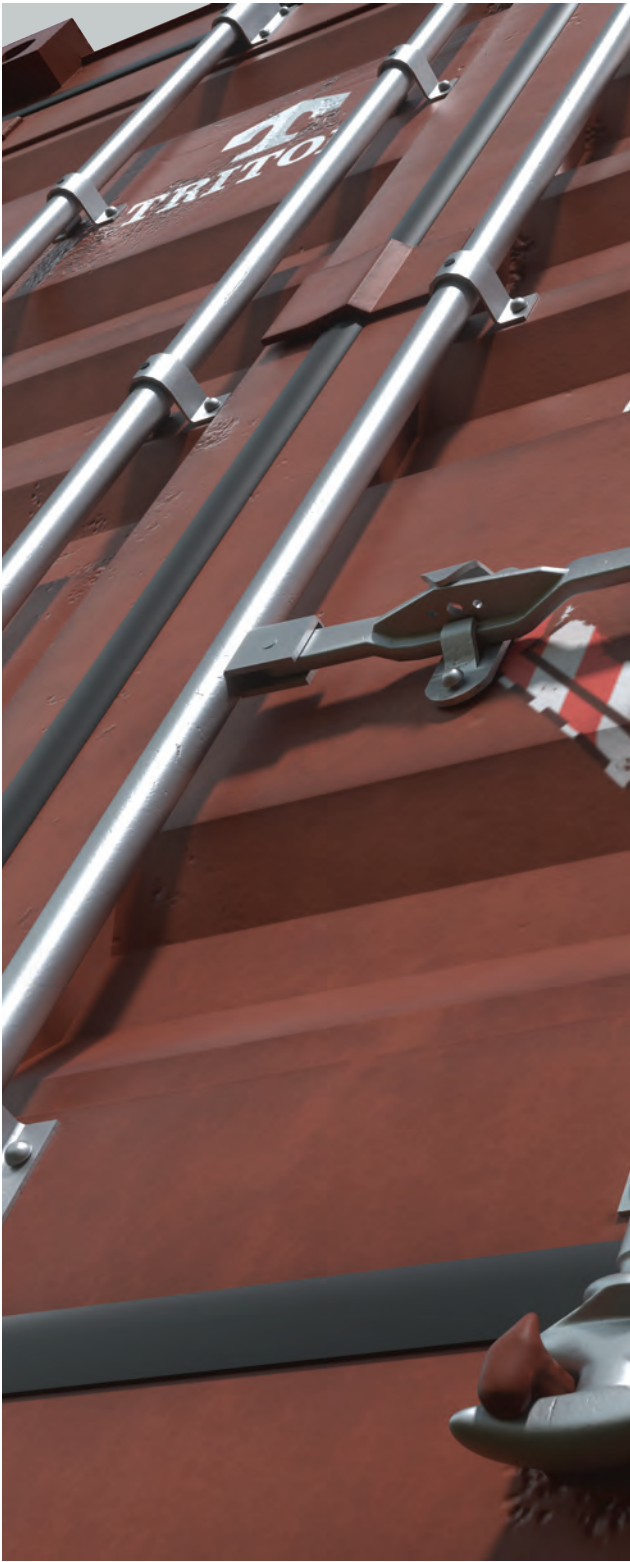
For Sale: Used

Available via Triton's global network of supply locations.



FEATURES

- Available in a range of conditions to suit all needs, from cargo transportation to secure domestic storage
- Generally 11-15 years old when retired from service
- Constructed from rugged corten steel
- Durable and secure, with vents to allow airflow
- Resistant to damage and corrosion
- A variety of options available
- Incredibly versatile and suitable for customers to modify into a wide range of applications
- Available globally
- Backed up by Triton's global network of supply locations and dedicated sales and support teams
- Also available for Direct Delivery to buyer's facilities, providing significant cost savings on transport



DIMENSIONS (METRIC/IMPERIAL)

EXTERNAL DIMENSIONS

Length	6,058 mm	19' 10.5"
Width	2,438 mm	8' 0.0"
Height	2,591 mm	8' 6.0"

INTERNAL DIMENSIONS

Length	5,898 mm	19' 4.2"
Width	2,352 mm	7' 8.6"
Height	2,393 mm	7' 10.2"

DOOR OPENING

Width	2,340 mm	7' 8.1"
Height	2,280 mm	7' 5.8"

CAPACITY & WEIGHTS

Inside Cubic Capacity	33.2 m ³	1172 ft ³
Max Gross	30,480 kg	67,200 lbs
Payload	28,090–28,580 kg	61,931–63,011 lbs
Tare	1,900–2,390 kg	4,189–5,269 lbs

NOTE: The dimensions and door openings of all containers correspond to ISO standards. However, due to production tolerances, a difference in measurement is possible.

DISCLAIMER: Every effort is made to ensure this information is accurate, however Triton does not assume any liability for the accuracy of the information and content provided in marketing or information materials, or for the consequences resulting from using the information and content provided. Triton does not guarantee or claim that said information and content is exhaustive. Claims as to the exhaustive nature of said information and content are excluded. The information and content is only provided for advertising purposes and is non-binding. No explicit or implied warranties or guarantees are made. The container displayed only represents a sample of the entire fleet.

The following items are registered or unregistered service marks in the United States and/or foreign jurisdictions pursuant to applicable intellectual property law and are the property of Triton International Limited and its subsidiaries: Triton® and TAL®.



CLASSIFICATION

For Sale: Used

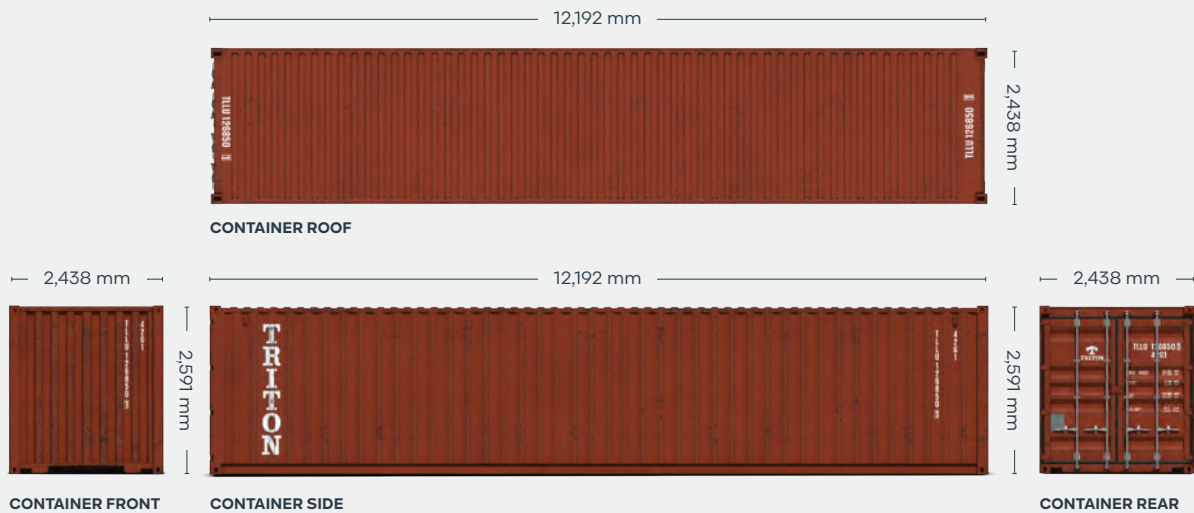
Available via Triton's global network of supply locations.

40ft Used Dry Container



FEATURES

- Available in a range of conditions to suit all needs, from cargo transportation to secure domestic storage
- Generally 11-15 years old when retired from service
- Constructed from rugged corten steel
- Durable and secure, with vents to allow airflow
- Resistant to damage and corrosion
- A variety of options available
- Incredibly versatile and suitable for customers to modify into a wide range of applications
- Available globally
- Backed up by Triton's global network of supply locations and dedicated sales and support teams
- Also available for direct delivery to buyer's facilities, providing significant cost savings on transport



DIMENSIONS (METRIC/IMPERIAL)

EXTERNAL DIMENSIONS

Length	12,192 mm	40' 0.0"
Width	2,438 mm	8' 0.0"
Height	2,591 mm	8' 6.0"

INTERNAL DIMENSIONS

Length	12,032 mm	39' 5.7"
Width	2,352 mm	7' 8.6"
Height	2,393 mm	7' 10.2"

DOOR OPENING

Width	2,340 mm	7' 8.1"
Height	2,280 mm	7' 5.8"

CAPACITY & WEIGHTS

Inside Cubic Capacity	67.7 m ³	2390 ft ³
Max Gross	30,480–32,500 kg	67,200–71,650 lbs
Payload	26,980–29,070 kg	59,484–64,090 lbs
Tare	3,430–3,920 kg	7,560–8,640 lbs

NOTE: The dimensions and door openings of all containers correspond to ISO standards. However, due to production tolerances, a difference in measurement is possible.

DISCLAIMER: Every effort is made to ensure this information is accurate, however Triton does not assume any liability for the accuracy of the information and content provided in marketing or information materials, or for the consequences resulting from using the information and content provided. Triton does not guarantee or claim that said information and content is exhaustive. Claims as to the exhaustive nature of said information and content are excluded. The information and content is only provided for advertising purposes and is non-binding. No explicit or implied warranties or guarantees are made. The container displayed only represents a sample of the entire fleet.

The following items are registered or unregistered service marks in the United States and/or foreign jurisdictions pursuant to applicable intellectual property law and are the property of Triton International Limited and its subsidiaries: Triton® and TAL®.



CLASSIFICATION

For Sale: Used

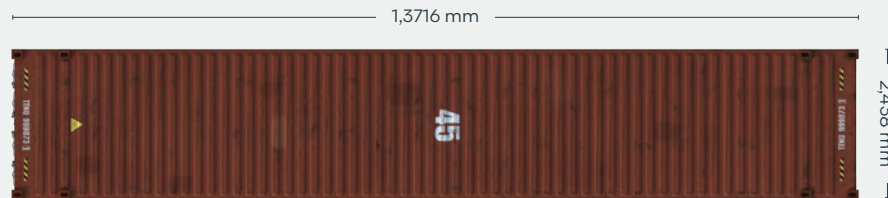
Available via Triton's global network of supply locations.

45ft Used High Cube Dry Container

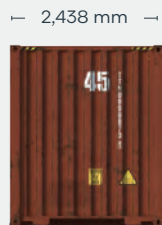


FEATURES

- Available in a range of conditions to suit all needs, from cargo transportation to secure domestic storage
- Generally 11-15 years old when retired from service
- Constructed from rugged corten steel
- Additional height provides extra internal cubic capacity, which means greater interior stacking capacity for your goods
- Durable and secure, with vents to allow airflow
- Resistant to damage and corrosion
- Superior paint systems
- A variety of options available
- Incredibly versatile and suitable for customers to modify into a wide range of applications
- Available globally
- Backed up by Triton's global network of supply locations and dedicated sales and support teams
- Also available for Direct Delivery to buyer's facilities, providing significant cost savings on transport



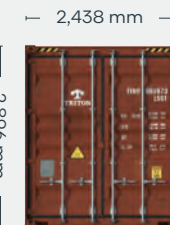
CONTAINER ROOF



CONTAINER FRONT



CONTAINER SIDE



CONTAINER REAR

DIMENSIONS (METRIC/IMPERIAL)

EXTERNAL DIMENSIONS

Length	13,716 mm	45' 0.0"
Width	2,438 mm	8' 0.0"
Height	2,896 mm	9' 6.0"

INTERNAL DIMENSIONS

Length	13,556 mm	44' 5.7"
Width	2,352 mm	7' 8.6"
Height	2,698 mm	8' 10.2"

DOOR OPENING

Width	2,340 mm	7' 8.1"
Height	2,585 mm	8' 5.8"

CAPACITY & WEIGHTS

Inside Cubic Capacity	86.0 m ³	3040 ft ³
Max Gross	30,480–32,500 kg	67,200–71,650 lbs
Payload	25,270–27,900 kg	55,714–61,510 lbs
Tare	4,600 kg–5,210 kg	10,140–11,486 lbs

NOTE: The dimensions and door openings of all containers correspond to ISO standards. However, due to production tolerances, a difference in measurement is possible.

DISCLAIMER: Every effort is made to ensure this information is accurate, however Triton does not assume any liability for the accuracy of the information and content provided in marketing or information materials, or for the consequences resulting from using the information and content provided. Triton does not guarantee or claim that said information and content is exhaustive. Claims as to the exhaustive nature of said information and content are excluded. The information and content is only provided for advertising purposes and is non-binding. No explicit or implied warranties or guarantees are made. The container displayed only represents a sample of the entire fleet.

The following items are registered or unregistered service marks in the United States and/or foreign jurisdictions pursuant to applicable intellectual property law and are the property of Triton International Limited and its subsidiaries: Triton® and TAL®.



CLASSIFICATION

For Sale: New

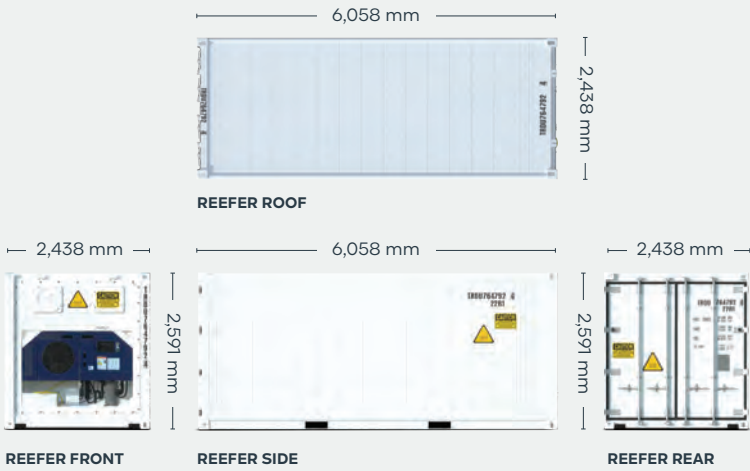
Available via Triton's global network of supply locations.

20ft Refrigerated Container



FEATURES

- Designed for safe transportation of perishable food, beverages and temperature sensitive cargo
- Ideal for on-site temperature controlled storage
- Strong, robust, insulated and repair friendly
- Resistant to bacteria
- Low heat leakage values
- Low GWP refrigerants compatible
- State-of-the-art design and low power consumption makes units highly efficient
- With HGSS roof end panels, vacuum valve, T-bar flooring and interior aluminum scuff lining
- Provisioned for track & trace feature
- Triton's industry leading new production testing and inspection criteria ensures the highest quality container
- Can be ordered with Carrier or Thermo King machinery, with 3 Phase Power and CFC friendly refrigerant
- Backed up by Triton's global network of supply locations and dedicated sales and support teams
- Available globally



DIMENSIONS (METRIC/IMPERIAL)

EXTERNAL DIMENSIONS

Length	6,058 mm	19' 10.5"
Width	2,438 mm	8' 0.0"
Height	2,591 mm	8' 6.0"

INTERNAL DIMENSIONS

Length	5,454 mm	17' 10.7"
Width	2,290 mm	7' 6.2"
Height	2,276 mm	7' 5.6"

DOOR OPENING

Width	2,294 mm	7' 6.3"
Height	2,264 mm	7' 5.1"

CAPACITY & WEIGHTS

Inside Cubic Capacity	28.4 m ³	1003 ft ³
Max Gross	30,480 kg	67,200 lbs
Payload	27,650 kg	60,960 lbs
Tare*	2,830 kg	6,240 lbs

*Tare can vary slightly based on reefer machine type.

NOTE: The dimensions and door openings of all containers correspond to ISO standards. However, due to production tolerances, a difference in measurement is possible.

DISCLAIMER: Every effort is made to ensure this information is accurate, however Triton does not assume any liability for the accuracy of the information and content provided in marketing or information materials, or for the consequences resulting from using the information and content provided. Triton does not guarantee or claim that said information and content is exhaustive. Claims as to the exhaustive nature of said information and content are excluded. The information and content is only provided for advertising purposes and is non-binding. No explicit or implied warranties or guarantees are made. The container displayed only represents a sample of the entire fleet.

The following items are registered or unregistered service marks in the United States and/or foreign jurisdictions pursuant to applicable intellectual property law and are the property of Triton International Limited and its subsidiaries: Triton® and TAL®.

40ft High Cube Domestic Refrigerated Container



STANDARD FEATURES

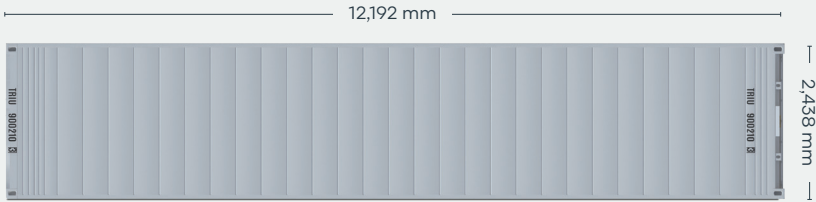
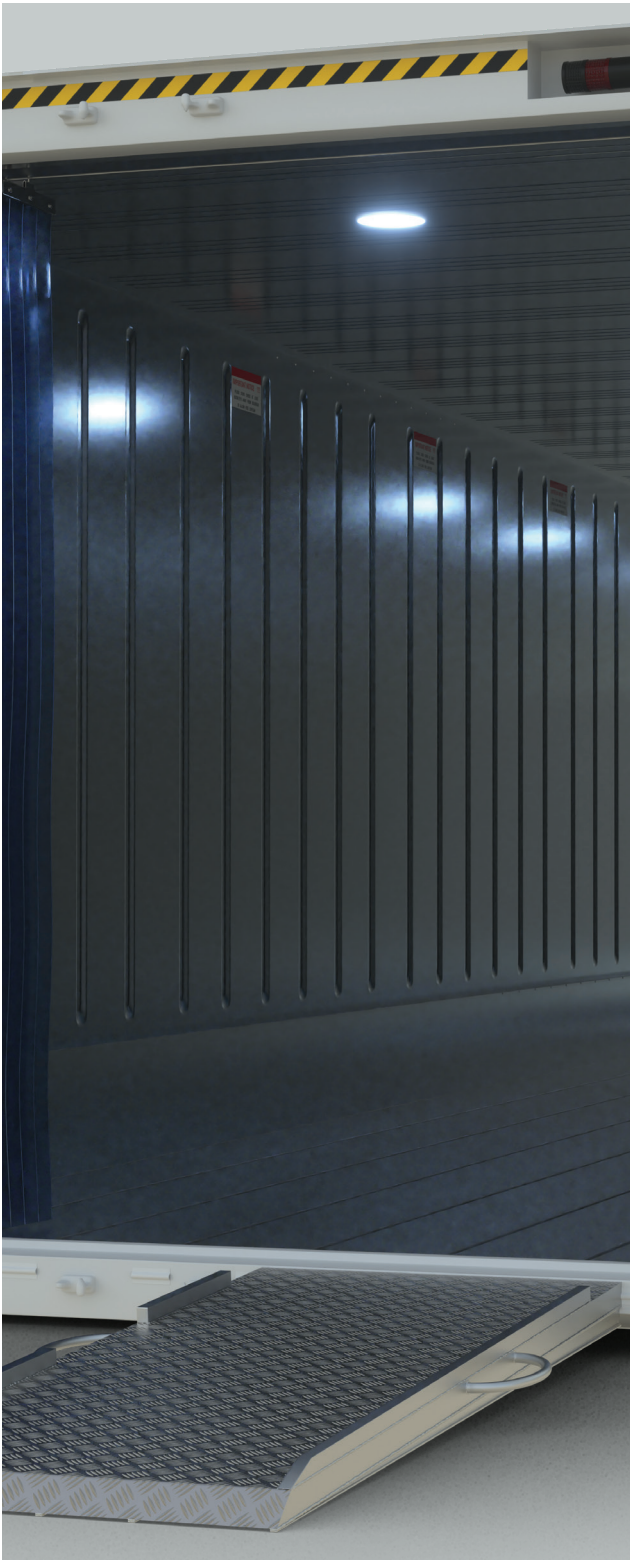
- Temperature range from -35°C to +30°C
- 3 phase machinery
- Easy open double doors (fully lockable)
- Flat flooring for easy maneuver of trolleys
- Aluminium loading ramp
- Internal lighting including emergency internal lighting in the event of a power failure
- Man trap panic alarm
- Plastic strip curtains

OPTIONAL FEATURES

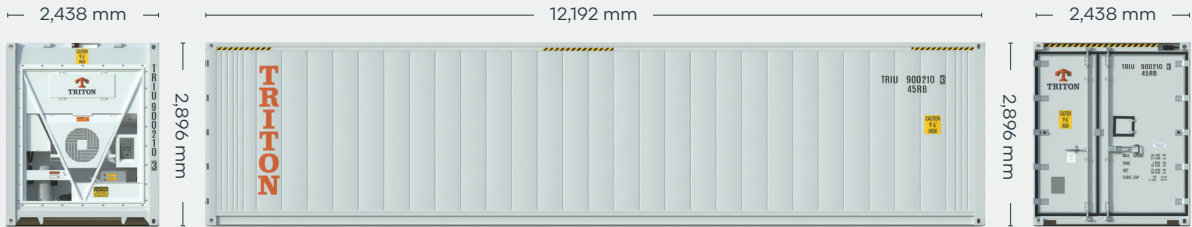
- Remote monitoring system (can be accessed via mobile phone, tablet or PC anywhere in the world)
- Can be ordered with Carrier, Starcool, Daikin or Thermo King machinery, with 3 Phase Power. These leading brands offer worldwide availability for parts and service

TEMPERATURE CONTROLLED STORAGE IDEAL FOR:

- Food and drink
 - Fresh fruit
 - Ice cream
 - Dairy
 - Meat
 - Fish
- Pharmaceutical / medical equipment
- Many other products that require a controlled environment



REEFER ROOF



REEFER FRONT

REEFER SIDE

REEFER REAR

DIMENSIONS (METRIC/IMPERIAL)

EXTERNAL DIMENSIONS

Length	12,192 mm	40' 0.0"
Width	2,438 mm	8' 0.0"
Height	2,896 mm	9' 6.0"

INTERNAL DIMENSIONS

Length	11,596 mm	38' 0.5"
Width	2,290 mm	7' 6.6"
Height	2,591 mm	8' 6.0"

DOOR OPENING

Width	2,200 mm	7' 2.61"
Height	2,543 mm	8' 4.12"

CAPACITY & WEIGHTS

Inside Cubic Capacity	68.8 m ³	2,430ft ³
Max Gross	34,000 kg	74,960 lbs
Payload	29,500 kg	65,036 lbs
Tare*	4,500 kg	9921 lbs

*Tare can vary slightly based on reefer machine type.

NOTE: The dimensions and door openings of all containers correspond to ISO standards. However, due to production tolerances, a difference in measurement is possible.

DISCLAIMER: Every effort is made to ensure this information is accurate, however Triton does not assume any liability for the accuracy of the information and content provided in marketing or information materials, or for the consequences resulting from using the information and content provided. Triton does not guarantee or claim that said information and content is exhaustive. Claims as to the exhaustive nature of said information and content are excluded. The information and content is only provided for advertising purposes and is non-binding. No explicit or implied warranties or guarantees are made. The container displayed only represents a sample of the entire fleet.

The following items are registered or unregistered service marks in the United States and/or foreign jurisdictions pursuant to applicable intellectual property law and are the property of Triton International Limited and its subsidiaries: Triton® and TAL®.



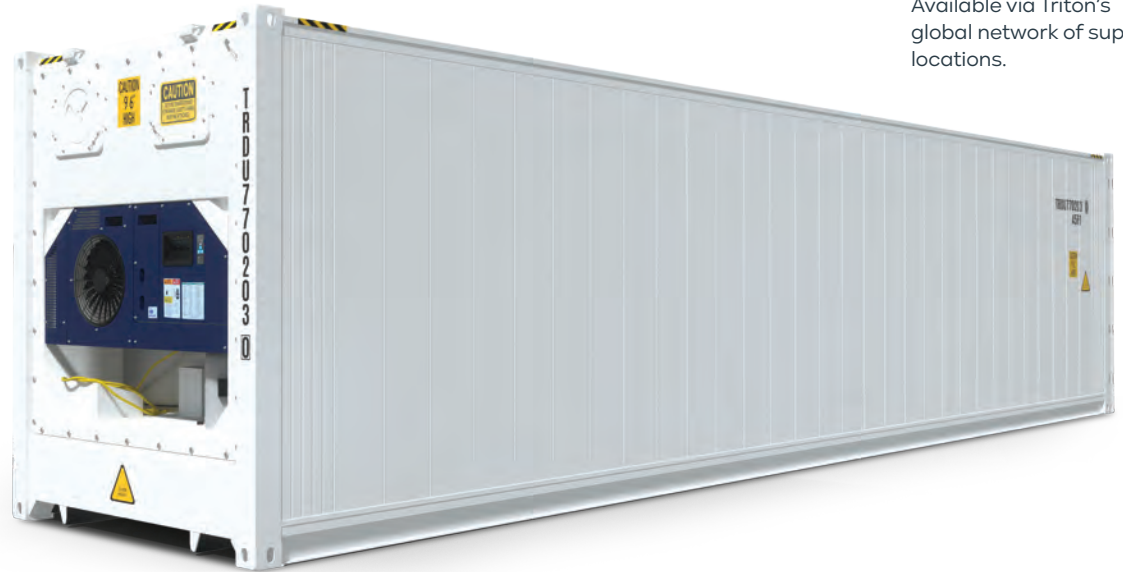
40ft High Cube Refrigerated Container



CLASSIFICATION

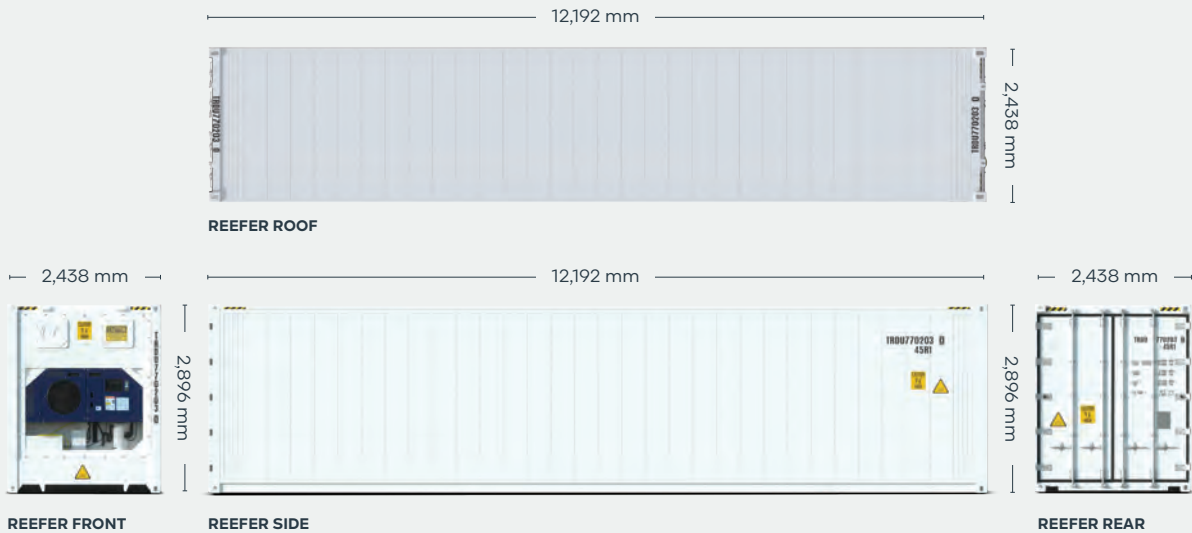
For Sale: New

Available via Triton's global network of supply locations.



FEATURES

- Additional height provides extra internal cubic capacity, which means greater interior stacking capacity for your goods
- Designed for safe transportation of perishable food, beverage and temperature sensitive cargo
- Ideal for on-site temperature controlled storage
- Strong, robust, insulated and repair friendly
- State-of-the-art design and low power consumption makes units highly efficient
- With HGSS roof end panels, vacuum valve, T-bar flooring and interior aluminum scuff lining
- Provisioned for track & trace feature
- Triton's industry leading new production testing and inspection criteria ensures the highest quality container
- Resistant to bacteria
- Low heat leakage values
- Low GWP refrigerants compatible
- Can be ordered with Carrier or Thermo King machinery, with 3 Phase Power and CFC friendly refrigerant. Both leading brands offer worldwide availability for parts and service
- Backed up by Triton's global network of supply locations and dedicated sales and support teams
- Available globally



DIMENSIONS (METRIC/IMPERIAL)

EXTERNAL DIMENSIONS

Length	12,192 mm	40' 0.0"
Width	2,438 mm	8' 0.0"
Height	2,896 mm	9' 6.0"

INTERNAL DIMENSIONS

Length	11,588 mm	38' 0.2"
Width	2,290 mm	7' 6.2"
Height	2,547.5 mm	8' 4.3"

DOOR OPENING

Width	2,294 mm	7' 6.3"
Height	2,569 mm	8' 5.1"

CAPACITY & WEIGHTS

Inside Cubic Capacity	67.6 m ³	2,387 ft ³
Max Gross	35,000 kg	77,160 lbs
Payload	30,440 kg	67,110 lbs
Tare*	4,560 kg	10,050 lbs

*Tare can vary slightly based on reefer machine type.

NOTE: The dimensions and door openings of all containers correspond to ISO standards. However, due to production tolerances, a difference in measurement is possible.

DISCLAIMER: Every effort is made to ensure this information is accurate, however Triton does not assume any liability for the accuracy of the information and content provided in marketing or information materials, or for the consequences resulting from using the information and content provided. Triton does not guarantee or claim that said information and content is exhaustive. Claims as to the exhaustive nature of said information and content are excluded. The information and content is only provided for advertising purposes and is non-binding. No explicit or implied warranties or guarantees are made. The container displayed only represents a sample of the entire fleet.

The following items are registered or unregistered service marks in the United States and/or foreign jurisdictions pursuant to applicable intellectual property law and are the property of Triton International Limited and its subsidiaries: Triton® and TAL®.



45ft High Cube Pallet Wide Refrigerated Container



CLASSIFICATION

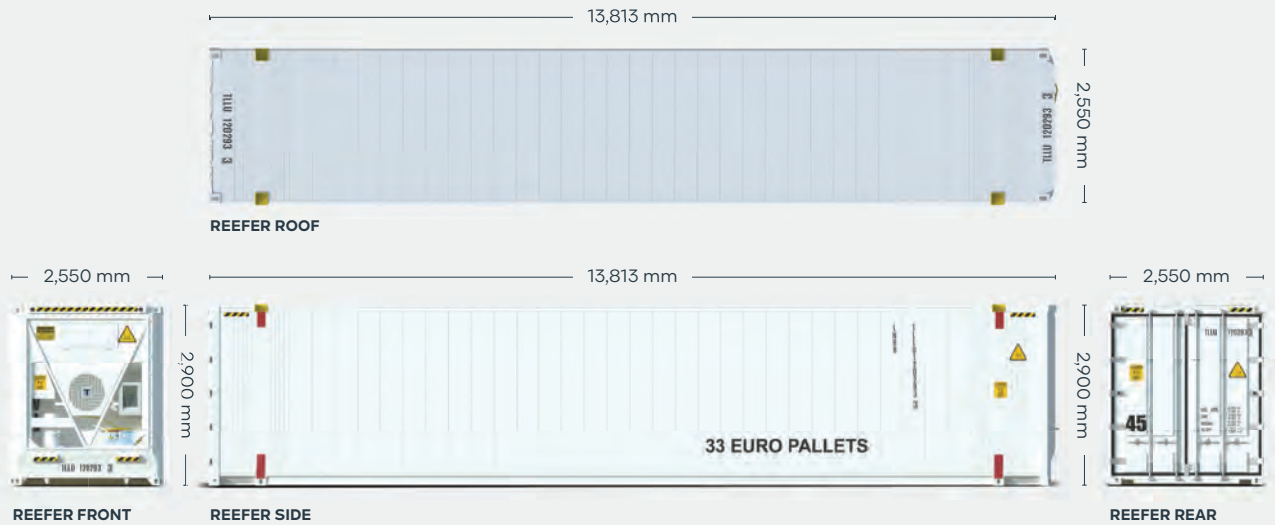
For Sale: New

Available via Triton's global network of supply locations.



FEATURES

- Additional height and length provides extra internal cubic capacity, which means greater interior stacking capacity for your goods
- Designed for safe transportation of perishable food, beverages and temperature sensitive cargo
- Ideal for on-site temperature controlled storage
- Strong, robust, insulated and repair friendly
- State-of-the-art design and low power consumption makes units highly efficient
- With HGSS roof end panels, vacuum valve, T-bar flooring and interior aluminum scuff lining
- Provisioned for track & trace feature
- Triton's industry leading new production testing and inspection criteria ensures the highest quality container
- Resistant to bacteria
- Low heat leakage values
- Low GWP refrigerants compatible
- Can be ordered with Carrier or Thermo King machinery, with 3 Phase Power and CFC friendly refrigerant. Both leading brands offer worldwide availability for parts and service
- Backed up by Triton's global network of supply locations and dedicated sales and support teams
- Available globally



DIMENSIONS (METRIC/IMPERIAL)

EXTERNAL DIMENSIONS

Length	13,813 mm	45 0.0"
Width	2,550 mm	8' 3.6"
Height	2,900 mm	9' 5.1"

INTERNAL DIMENSIONS

Length	13,261 mm	43' 0.0"
Width	2,440 mm	8' 0.0"
Height	2,570 mm	8' 4.3"

DOOR OPENING

Width	2,440 mm	8' 0.0"
Height	2,570 mm	8' 4.3"

CAPACITY & WEIGHTS

Inside Cubic Capacity	83.5 m ³	2,949 ft ³
Max Gross	35,000 kg	77,160 lbs
Payload	28,920 kg	63,760 lbs
Tare*	6,080 kg	13,400 lbs

*Tare can vary slightly based on reefer machine type.

NOTE: The dimensions and door openings of all containers correspond to ISO standards. However, due to production tolerances, a difference in measurement is possible.

DISCLAIMER: Every effort is made to ensure this information is accurate, however Triton does not assume any liability for the accuracy of the information and content provided in marketing or information materials, or for the consequences resulting from using the information and content provided. Triton does not guarantee or claim that said information and content is exhaustive. Claims as to the exhaustive nature of said information and content are excluded. The information and content is only provided for advertising purposes and is non-binding. No explicit or implied warranties or guarantees are made. The container displayed only represents a sample of the entire fleet.

The following items are registered or unregistered service marks in the United States and/or foreign jurisdictions pursuant to applicable intellectual property law and are the property of Triton International Limited and its subsidiaries: Triton® and TAL®.



20ft Used Refrigerated Container



CLASSIFICATION

For Sale: Used

Available via Triton's global network of supply locations.



FEATURES

- Available in a range of conditions to suit all needs
- Refrigerated and insulated shipping containers
- Ideal for on-site temperature controlled storage
- Designed for safe transportation of perishable food, beverages and temperature sensitive cargo
- State-of-the-art design makes units highly efficient
- Most units have stainless steel lined interiors and T-bar flooring
- Most machinery comes with 3 Phase power and CFC friendly refrigerant
- Backed up by Triton's global network of supply locations and dedicated sales and support teams
- Available globally



REEFER ROOF



REEFER FRONT



REEFER SIDE



REEFER REAR

DIMENSIONS (METRIC/IMPERIAL)

EXTERNAL DIMENSIONS

Length	6,058 mm	19' 10.5"
Width	2,438 mm	8' 0.0"
Height	2,591 mm	8' 6.0"

INTERNAL DIMENSIONS

Length	5,454 mm	17' 10.7"
Width	2,290 mm	7' 6.2"
Height	2,276 mm	7' 5.6"

DOOR OPENING

Width	2,294 mm	7' 6.3"
Height	2,264 mm	7' 5.1"

CAPACITY & WEIGHTS

Inside Cubic Capacity	28.4 m ³	1003 ft ³
Max Gross	30,480 kg	67,200 lbs
Payload	27,650 kg	60,960 lbs
Tare*	2,830 kg	6,240 lbs

*Tare can vary slightly based on reefer machine type.

NOTE: The dimensions and door openings of all containers correspond to ISO standards. However, due to production tolerances, a difference in measurement is possible.

DISCLAIMER: Every effort is made to ensure this information is accurate, however Triton does not assume any liability for the accuracy of the information and content provided in marketing or information materials, or for the consequences resulting from using the information and content provided. Triton does not guarantee or claim that said information and content is exhaustive. Claims as to the exhaustive nature of said information and content are excluded. The information and content is only provided for advertising purposes and is non-binding. No explicit or implied warranties or guarantees are made. The container displayed only represents a sample of the entire fleet.

The following items are registered or unregistered service marks in the United States and/or foreign jurisdictions pursuant to applicable intellectual property law and are the property of Triton International Limited and its subsidiaries: Triton® and TAL®.



CLASSIFICATION

For Sale: Used

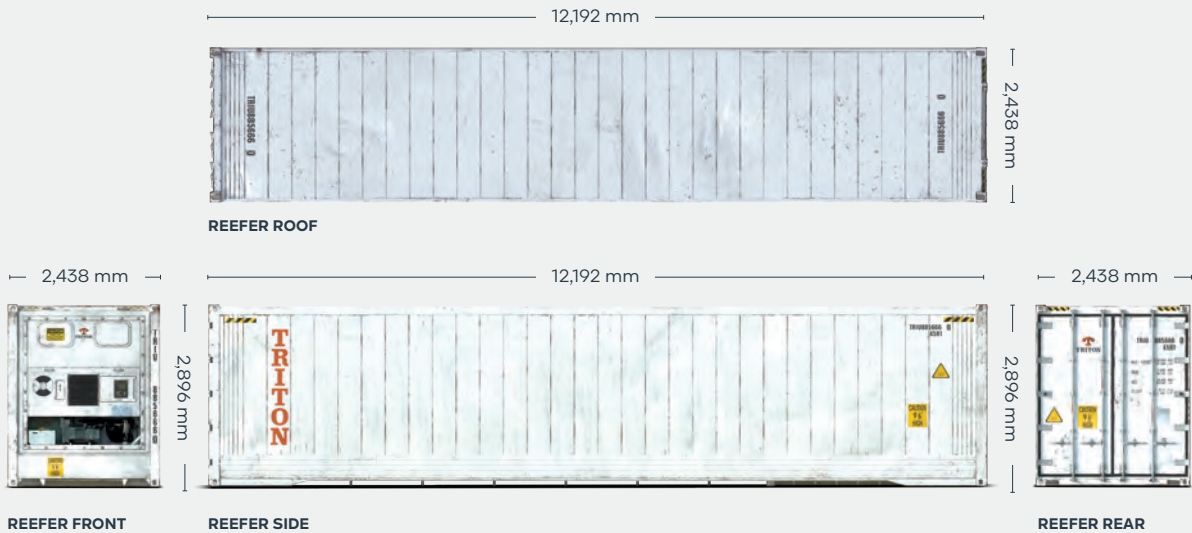
Available via Triton's global network of supply locations.

40ft Used High Cube Refrigerated Container



FEATURES

- Additional height provides extra internal cubic capacity, which means greater interior stacking capacity for your goods
- Designed for safe transportation of perishable food, beverage and temperature sensitive cargo
- Ideal for on-site temperature controlled storage
- Strong, robust, insulated and repair friendly
- State-of-the-art design and low power consumption makes units highly efficient
- Provisioned for track & trace feature
- With HGSS roof end panels, vacuum valve, T-bar flooring and interior aluminum scuff lining
- Resistant to bacteria
- Low heat leakage values
- Low GWP refrigerants compatible
- Can be ordered with Carrier or Thermo King machinery, with 3 Phase Power and CFC friendly refrigerant. Both leading brands offer worldwide availability for parts and service
- Backed up by Triton's global network of supply locations and dedicated sales and support teams
- Available globally



DIMENSIONS (METRIC/IMPERIAL)

EXTERNAL DIMENSIONS

Length	12,192 mm	40' 0.0"
Width	2,438 mm	8' 0.0"
Height	2,896 mm	9' 6.0"

INTERNAL DIMENSIONS

Length	11,588 mm	38' 0.2"
Width	2,290 mm	7' 6.2"
Height	2,547.5 mm	8' 4.3"

DOOR OPENING

Width	2,294 mm	7' 6.3"
Height	2,569 mm	8' 5.1"

CAPACITY & WEIGHTS

Inside Cubic Capacity	67.6 m ³	2,387 ft ³
Max Gross	35,000 kg	77,160 lbs
Payload	30,440 kg	67,110 lbs
Tare*	4,560 kg	10,050 lbs

*Tare can vary slightly based on reefer machine type.

NOTE: The dimensions and door openings of all containers correspond to ISO standards. However, due to production tolerances, a difference in measurement is possible.

DISCLAIMER: Every effort is made to ensure this information is accurate, however Triton does not assume any liability for the accuracy of the information and content provided in marketing or information materials, or for the consequences resulting from using the information and content provided. Triton does not guarantee or claim that said information and content is exhaustive. Claims as to the exhaustive nature of said information and content are excluded. The information and content is only provided for advertising purposes and is non-binding. No explicit or implied warranties or guarantees are made. The container displayed only represents a sample of the entire fleet.

The following items are registered or unregistered service marks in the United States and/or foreign jurisdictions pursuant to applicable intellectual property law and are the property of Triton International Limited and its subsidiaries: Triton® and TAL®.



45ft Used High Cube Pallet Wide Refrigerated Container



CLASSIFICATION

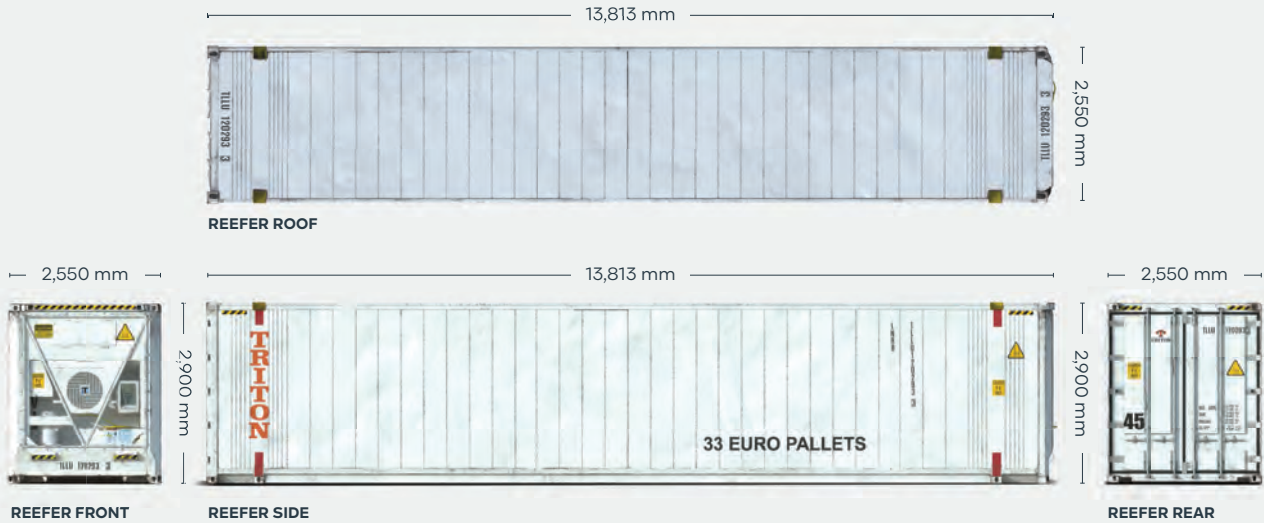
For Sale: Used

Available via Triton's global network of supply locations.



FEATURES

- Available in a range of conditions to suit all needs
- Additional height and length provides extra internal cubic capacity, which means greater interior stacking capacity for your goods
- Refrigerated and insulated shipping containers
- Designed for safe transportation of perishable food, beverages and temperature sensitive cargo
- Ideal for on-site temperature controlled storage
- State of the art design makes units highly efficient
- Most units have stainless steel lined interiors and T-bar flooring
- Most machinery comes with 3 Phase power and CFC friendly refrigerant
- Backed up by Triton's global network of supply locations and dedicated sales and support teams
- Available globally



DIMENSIONS (METRIC/IMPERIAL)

EXTERNAL DIMENSIONS

Length	13,813 mm	45' 0.0"
Width	2,550 mm	8' 3.6"
Height	2,900 mm	9' 5.1"

INTERNAL DIMENSIONS

Length	13,261 mm	43' 0.0"
Width	2,440 mm	8' 0.0"
Height	2,570 mm	8' 4.3"

DOOR OPENING

Width	2,440 mm	8' 0.0"
Height	2,570 mm	8' 4.3"

CAPACITY & WEIGHTS

Inside Cubic Capacity	83.5 m ³	2,949 ft ³
Max Gross	35,000 kg	77,160 lbs
Payload	28,920 kg	63,760 lbs
Tare*	6,080 kg	13,400 lbs

*Tare can vary slightly based on reefer machine type.

NOTE: The dimensions and door openings of all containers correspond to ISO standards. However, due to production tolerances, a difference in measurement is possible.

DISCLAIMER: Every effort is made to ensure this information is accurate, however Triton does not assume any liability for the accuracy of the information and content provided in marketing or information materials, or for the consequences resulting from using the information and content provided. Triton does not guarantee or claim that said information and content is exhaustive. Claims as to the exhaustive nature of said information and content are excluded. The information and content is only provided for advertising purposes and is non-binding. No explicit or implied warranties or guarantees are made. The container displayed only represents a sample of the entire fleet.

The following items are registered or unregistered service marks in the United States and/or foreign jurisdictions pursuant to applicable intellectual property law and are the property of Triton International Limited and its subsidiaries: Triton® and TAL®.

10ft Domestic Refrigerated Container



STANDARD FEATURES

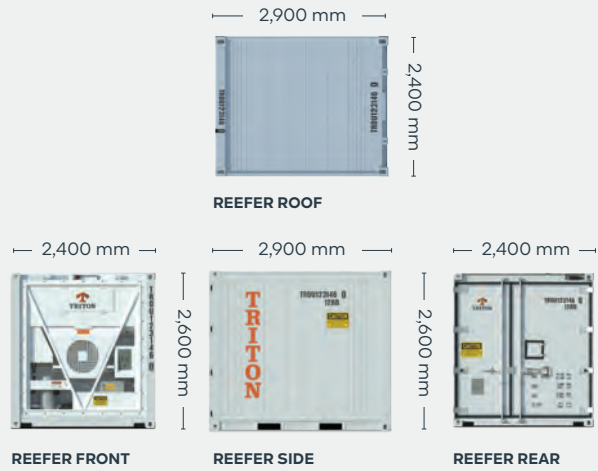
- Temperature range from -30°C to +30°C
- Easy open double doors (fully lockable)
- Flat flooring for easy maneuver of trolleys
- Aluminium loading ramp
- Internal lighting including emergency internal lighting in the event of a power failure
- Man trap panic alarm
- Plastic strip curtains

OPTIONAL FEATURES

- Remote monitoring system (can be accessed via mobile phone, tablet or PC anywhere in the world)
- Can be ordered with Carrier, Starcool, Daikin or Thermo King machinery, with 3 Phase Power. These leading brands offer worldwide availability for parts and service

TEMPERATURE CONTROLLED STORAGE IDEAL FOR:

- Food and drink
 - Fresh fruit
 - Ice cream
 - Dairy
 - Meat
 - Fish
- Pharmaceutical / medical equipment
- Many other products that require a controlled environment



DIMENSIONS (METRIC/IMPERIAL)

EXTERNAL DIMENSIONS

Length	2,900 mm	10' 0"
Width	2,400 mm	8' 0"
Height	2,600 mm	8' 6"

INTERNAL DIMENSIONS

Length	2,000 mm	6' 4"
Width	2,300 mm	7' 6"
Height	2,300 mm	7' 6"

DOOR OPENING

Width	2,100 mm	7' 2"
Height	2,200 mm	7' 4"

CAPACITY & WEIGHTS

Inside Cubic Capacity	12.5 m ³	440 ft ³
Max Gross	10,160 kg	22,400 lbs
Payload	8,100 kg	17,860 lbs
Tare*	2,060 kg	4,540 lbs

*Tare can vary slightly based on reefer machine type.

NOTE: The dimensions and door openings of all containers correspond to ISO standards. However, due to production tolerances, a difference in measurement is possible.

DISCLAIMER: Every effort is made to ensure this information is accurate, however Triton does not assume any liability for the accuracy of the information and content provided in marketing or information materials, or for the consequences resulting from using the information and content provided. Triton does not guarantee or claim that said information and content is exhaustive. Claims as to the exhaustive nature of said information and content are excluded. The information and content is only provided for advertising purposes and is non-binding. No explicit or implied warranties or guarantees are made. The container displayed only represents a sample of the entire fleet. The following items are registered or unregistered service marks in the United States and/or foreign jurisdictions pursuant to applicable intellectual property law and are the property of Triton International Limited and its subsidiaries: Triton® and TAL®.

20ft Domestic Refrigerated Container



STANDARD FEATURES

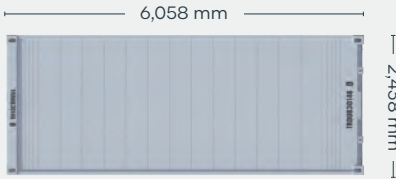
- Temperature range from -35°C to +30°C
- 3 phase machinery
- Easy open double doors (fully lockable)
- Flat flooring for easy maneuver of trolleys
- Aluminium loading ramp
- Internal lighting including emergency internal lighting in the event of a power failure
- Man trap panic alarm
- Plastic strip curtains

OPTIONAL FEATURES

- Remote monitoring system (can be accessed via mobile phone, tablet or PC anywhere in the world)
- Can be ordered with Carrier, Starcool, Daikin or Thermo King machinery, with 3 Phase Power. These leading brands offer worldwide availability for parts and service

TEMPERATURE CONTROLLED STORAGE IDEAL FOR:

- Food and drink
 - Fresh fruit
 - Ice cream
 - Dairy
 - Meat
 - Fish
- Pharmaceutical / medical equipment
- Many other products that require a controlled environment



REEFER ROOF



REEFER FRONT



REEFER SIDE



REEFER REAR

DIMENSIONS (METRIC/IMPERIAL)

EXTERNAL DIMENSIONS

Length	6,058 mm	19' 10.5"
Width	2,438 mm	8' 0.0"
Height	2,591 mm	8' 6.0"

INTERNAL DIMENSIONS

Length	5,462 mm	17' 9.1"
Width	2,290 mm	7' 6.2"
Height	2,286 mm	7' 5.0"

DOOR OPENING

Width	2,294 mm	7' 6.3"
Height	2,238 mm	7' 3.4"

CAPACITY & WEIGHTS

Inside Cubic Capacity	28.6 m ³	1010 ft ³
Max Gross	30,480 kg	67,197 lbs
Payload	27,650 kg	60,960 lbs
Tare*	2,830 kg	6,240 lbs

*Tare can vary slightly based on reefer machine type.

NOTE: The dimensions and door openings of all containers correspond to ISO standards. However, due to production tolerances, a difference in measurement is possible.

DISCLAIMER: Every effort is made to ensure this information is accurate, however Triton does not assume any liability for the accuracy of the information and content provided in marketing or information materials, or for the consequences resulting from using the information and content provided. Triton does not guarantee or claim that said information and content is exhaustive. Claims as to the exhaustive nature of said information and content are excluded. The information and content is only provided for advertising purposes and is non-binding. No explicit or implied warranties or guarantees are made. The container displayed only represents a sample of the entire fleet.

The following items are registered or unregistered service marks in the United States and/or foreign jurisdictions pursuant to applicable intellectual property law and are the property of Triton International Limited and its subsidiaries: Triton® and TAL®.



Used ISO Fluid Tank Container



CLASSIFICATION

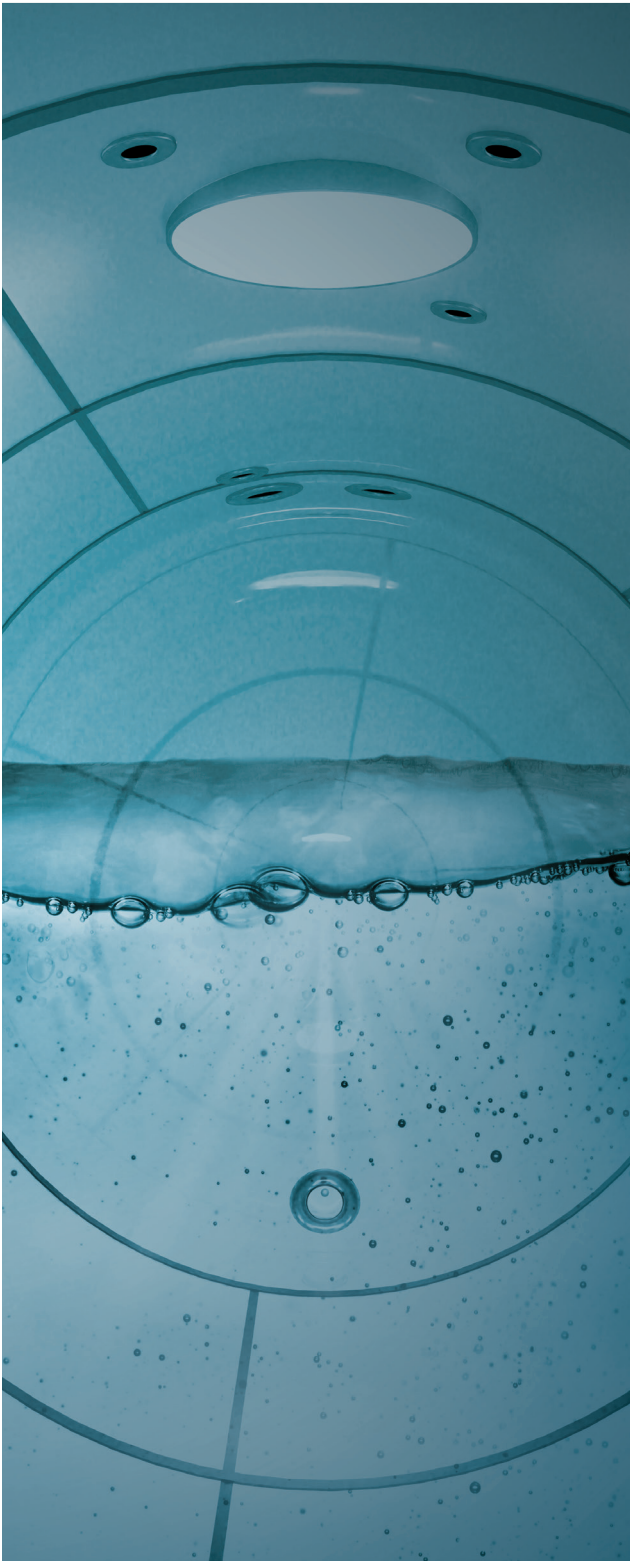
For Sale: Used

Available via Triton's global network of supply locations.



FEATURES

- UN Portable Tank: Type T11 and T14
- Capacities ranging from 21000l to 35000l
- Approved for ADR/RID/IMDG transportation
- Suitable for the carriage of most bulk liquids
- General specs include a high quality stainless steel tank barrel
- Full frame type design with B-style walkway
- Internationally recognized fittings
- Insulation with steam heating capability
- Rigorous quality control of our 3rd party production facilities
- Backed up by Triton's global network of supply locations and dedicated sales and support teams
- Available globally in all hub locations



DIMENSIONS (METRIC/IMPERIAL)

FRAME DIMENSIONS (20' Equivalent)

Length	6,058 mm	19' 10.5"
Width	2,438 mm	8' 0.0"
Height	2,591 mm	8' 6.0"

WEIGHT, PRESSURE & TEMPERATURE

Maximum Gross Weight	36,000 kg
Tare Weight	3,500–3,910 kg
Payload	32,090–32,500 kg
Maximum Allowable Working Pressure	4.00 bar
Design Temperature (frame & tank)	–40°C to +130°C

NOTE: The dimensions and door openings of all containers correspond to ISO standards. However, due to production tolerances, a difference in measurement is possible.

DISCLAIMER: Every effort is made to ensure this information is accurate, however Triton does not assume any liability for the accuracy of the information and content provided in marketing or information materials, or for the consequences resulting from using the information and content provided. Triton does not guarantee or claim that said information and content is exhaustive. Claims as to the exhaustive nature of said information and content are excluded. The information and content is only provided for advertising purposes and is non-binding. No explicit or implied warranties or guarantees are made. The container displayed only represents a sample of the entire fleet.

The following items are registered or unregistered service marks in the United States and/or foreign jurisdictions pursuant to applicable intellectual property law and are the property of Triton International Limited and its subsidiaries: Triton® and TAL®.

OPTIONS

AVAILABLE ISO TANKS T11 TYPES

20ft	21,000 litre
20ft	25,000 litre
20ft	26,000 litre

AVAILABLE NON-ISO T11 TYPES

7.82m Swap Body	35,000 litre
-----------------	--------------

HERE. THERE. EVERYWHERE

We supply the world

Triton is the largest lessor of intermodal containers in the world with over 7 million TEU of containers. Our services are available in 89 countries around the globe. So, no matter where you need containers, we'll have them nearby. To find your nearest Triton Container Sales manager visit www.tritoncontainer.com.



**Global inventory of
cargoworthy containers
for lease and sale.**



**Unrivalled container
supply at competitive
prices.**



**Outstanding and
highly responsive
customer services.**



**Global network of 20 offices
and 3 independent agencies
across 16 countries.**



**Equipment
built to the
highest quality.**



**Our size, strength and reliability
make us the go-to supplier of
intermodal shipping containers.**



We're the biggest for a reason, contact our friendly experts and experience Triton's world-leading service and cost savings today. Imagine what we can do together.

www.tritoncontainer.com