



## CLASSIFICATION

### Lease

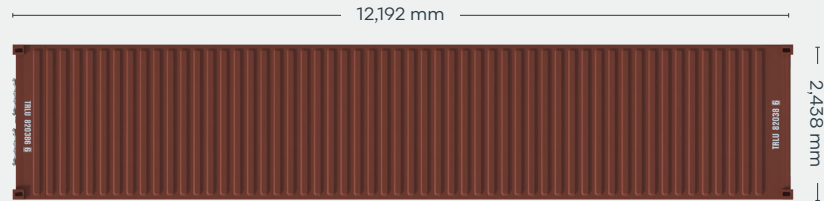
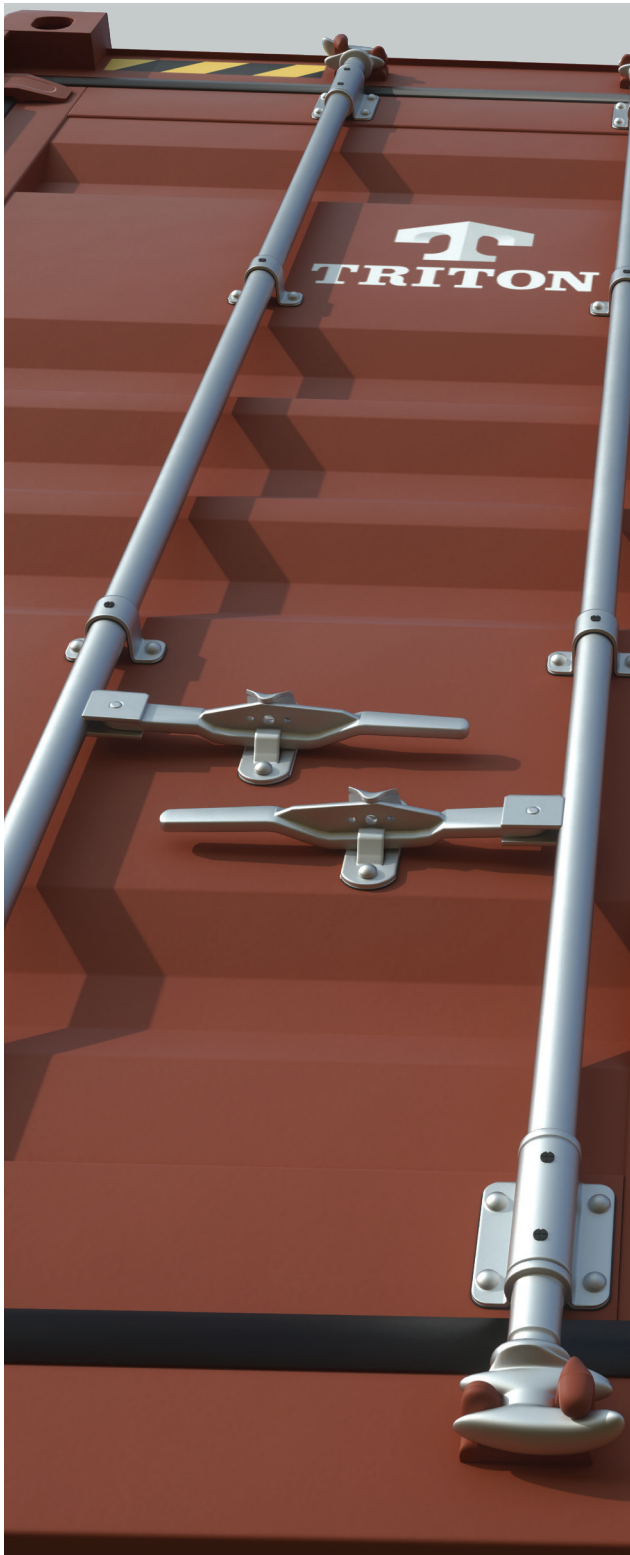
Available via Triton's global network of supply locations.

# 40ft High Cube Dry Container

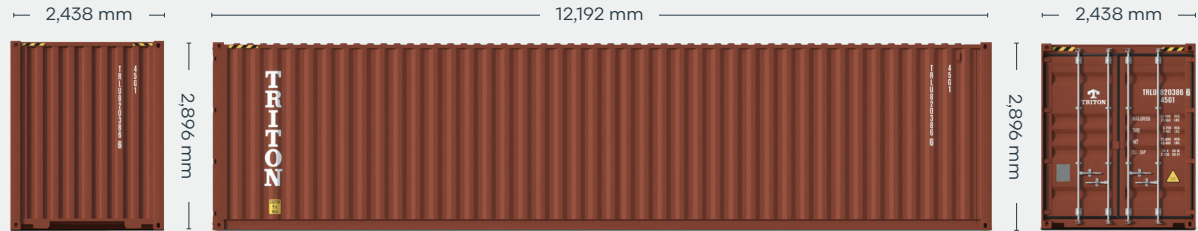


## FEATURES

- Additional height provides extra internal cubic capacity, which means greater interior stacking capacity for your goods
- Manufactured with rust resistant corten steel
- Superior paint systems
- Resistant to damage and corrosion
- Secure and weatherproof, with vents to allow airflow
- Incredibly versatile
- Triton's industry leading new production testing and inspection criteria ensures the highest quality container
- Backed up by Triton's global network of supply locations and dedicated leasing and support teams
- Available globally
- IICL-6 repair criteria saves cost at off-hire
- Damage Protection Plan available to reduce costs and time at off-hire
- Flexible lease terms to meet your company needs



CONTAINER ROOF



CONTAINER FRONT

CONTAINER SIDE

CONTAINER REAR

## DIMENSIONS (METRIC/IMPERIAL)

### EXTERNAL DIMENSIONS

|               |           |          |
|---------------|-----------|----------|
| <b>Length</b> | 12,192 mm | 40' 0.0" |
| <b>Width</b>  | 2,438 mm  | 8' 0.0"  |
| <b>Height</b> | 2,896 mm  | 9' 6.0"  |

### INTERNAL DIMENSIONS

|               |           |          |
|---------------|-----------|----------|
| <b>Length</b> | 12,032 mm | 39' 5.7" |
| <b>Width</b>  | 2,352 mm  | 7' 8.6"  |
| <b>Height</b> | 2,698 mm  | 8' 10.2" |

### DOOR OPENING

|               |          |         |
|---------------|----------|---------|
| <b>Width</b>  | 2,340 mm | 7' 8.1" |
| <b>Height</b> | 2,585 mm | 8' 5.8" |

### CAPACITY & WEIGHTS

|                              |                     |                       |
|------------------------------|---------------------|-----------------------|
| <b>Inside Cubic Capacity</b> | 76.4 m <sup>3</sup> | 2,700 ft <sup>3</sup> |
| <b>Max Gross</b>             | 32,500 kg           | 71,650 lbs            |
| <b>Payload</b>               | 28,800 kg           | 63,490 lbs            |
| <b>Tare</b>                  | 3,700 kg            | 8,160 lbs             |

**NOTE:** The dimensions and door openings of all containers correspond to ISO standards. However, due to production tolerances, a difference in measurement is possible.

**DISCLAIMER:** Every effort is made to ensure this information is accurate, however Triton does not assume any liability for the accuracy of the information and content provided in marketing or information materials, or for the consequences resulting from using the information and content provided. Triton does not guarantee or claim that said information and content is exhaustive. Claims as to the exhaustive nature of said information and content are excluded. The information and content is only provided for advertising purposes and is non-binding. No explicit or implied warranties or guarantees are made. The container displayed only represents a sample of the entire fleet.

The following items are registered or unregistered service marks in the United States and/or foreign jurisdictions pursuant to applicable intellectual property law and are the property of Triton International Limited and its subsidiaries: Triton® and TAL®.