



TRITON

OUR SECTORS

Ro/Ro operators

We understand the challenges Ro/Ro vessel operators frequently face when transporting heavy or out of gauge cargo.



OUR SECTORS – RO/RO OPERATORS

Specialist equipment where and when it's needed

Ro/Ro operators rely on our specialized equipment to transport oversized and heavy cargo.

Our range of Flatracks and Roll Trailers facilitates the worldwide transportation of a wide range of oversized and heavy loads, including vehicles on tracks, large reels, boats, pipes, trucks, and farm or construction machinery.

Triton Roll Trailers

Modern and durable, Triton Roll Trailers are designed to mitigate the risk of damage to cargo during transport. We provide access to extensive stock which is available for lease globally.

Triton Flush Folding Flatracks

Available in a range of sizes and conditions, Triton Flatracks are equipped with thick plank floors, heavy-duty steel frames, and lashing rings.

At Triton, we can offer equipment on a long-term or short-term lease with flexible terms to meet the specific needs of our Ro/Ro operator customers. In addition, we ensure our leased containers always remain in optimum

condition and supply Roll Trailers and Flush Folding Flatracks through more than 400 third-party-owned depots globally.

We also sell used Flatracks in various conditions. Please contact your local Triton Container Sales manager for further information.

PLEASE NOTE: The following pages showcase a small sample of products in the Triton global inventory. We stock a wide range of products for lease and sale in various conditions. Get in touch with your local Triton representative for more information.



20ft Flush Folding Flatracks



CLASSIFICATION

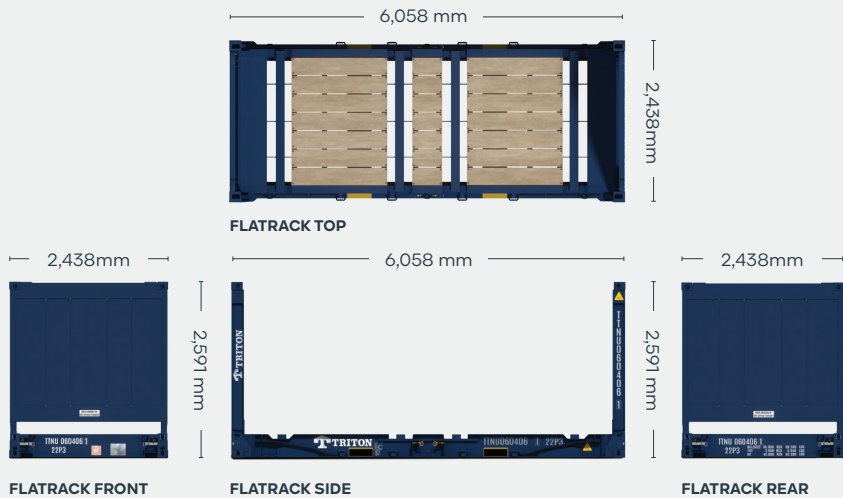
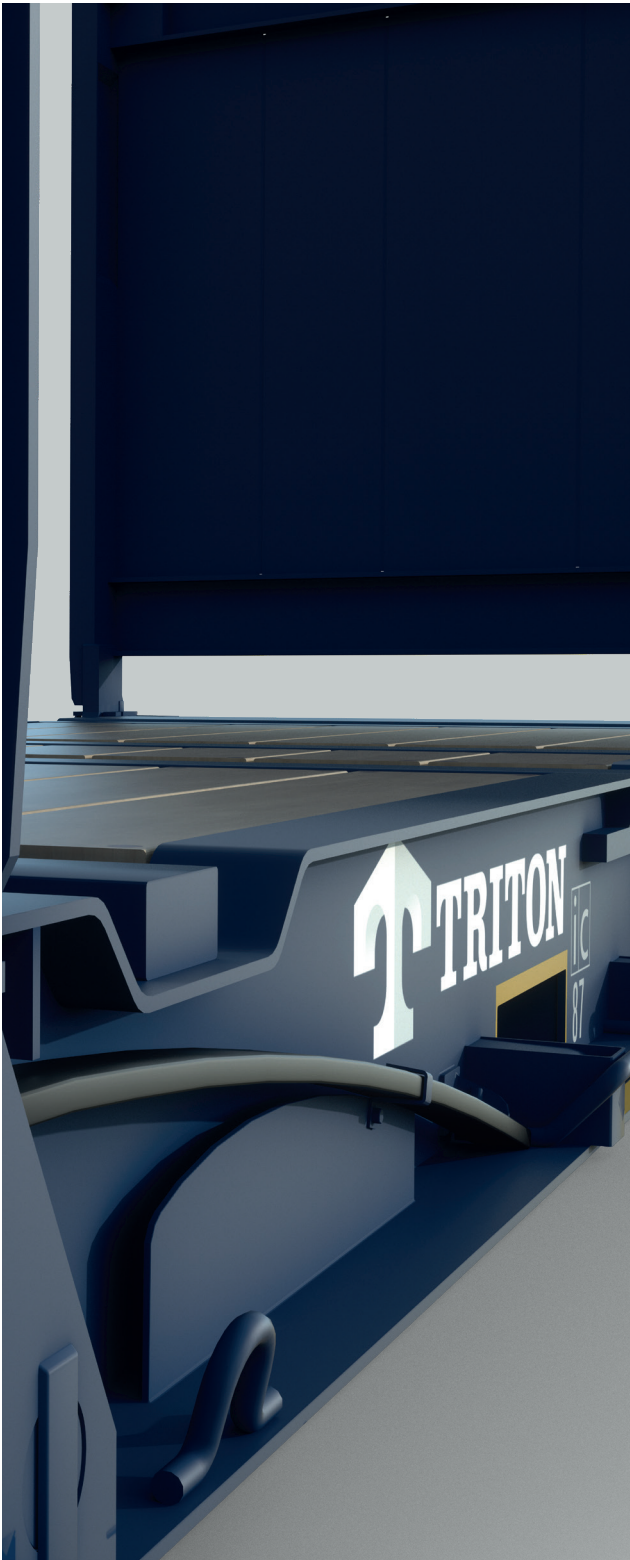
Lease

Available via Triton's global network of supply locations.



FEATURES

- Built to carry heavy or oversized cargoes
- Great for specialized shipments of steel, pipes, drums and machinery
- Forklift pockets for easy empty handling
- Heavy duty steel frames and thick plank floors and lashing rings all around
- With flush folding end frames to allow for efficient stacking and repositioning
- Triton's industry leading new production testing and inspection criteria ensures the highest quality container
- Available in the high demand hub ports
- Backed up by Triton's global network of supply locations and dedicated leasing and support teams
- Flexible lease terms to meet your company needs



DIMENSIONS (METRIC/IMPERIAL)

EXTERNAL DIMENSIONS

| | | |
|-------------------------------------|----------|-----------|
| Length (Base bottom casting) | 6,058 mm | 19' 10.5" |
| Width (Base bottom casting) | 2,438 mm | 8' 0.0" |
| Height (End frame up) | 2,591 mm | 8' 6.0" |
| Height (End frame down) | 370 mm | 1' 2.6" |

INTERNAL DIMENSIONS

| | | |
|---|----------|----------|
| Length (Between end panels) | 6,038 mm | 19' 9.7" |
| Width (Over bottom side rail) | 2,194 mm | 7' 2.4" |
| Height (Side rail to top castings) | 2,233 mm | 7' 3.9" |

NOTE: The dimensions of containers correspond to ISO standards.
However, due to production tolerances, a difference in measurement is possible.


DISCLAIMER: Every effort is made to ensure this information is accurate, however Triton does not assume any liability for the accuracy of the information and content provided in marketing or information materials, or for the consequences resulting from using the information and content provided. Triton does not guarantee or claim that said information and content is exhaustive. Claims as to the exhaustive nature of said information and content are excluded. The information and content is only provided for advertising purposes and is non-binding. No explicit or implied warranties or guarantees are made. The container displayed only represents a sample of the entire fleet.

The following items are registered or unregistered service marks in the United States and/or foreign jurisdictions pursuant to applicable intellectual property law and are the property of Triton International Limited and its subsidiaries: Triton® and TAL®.

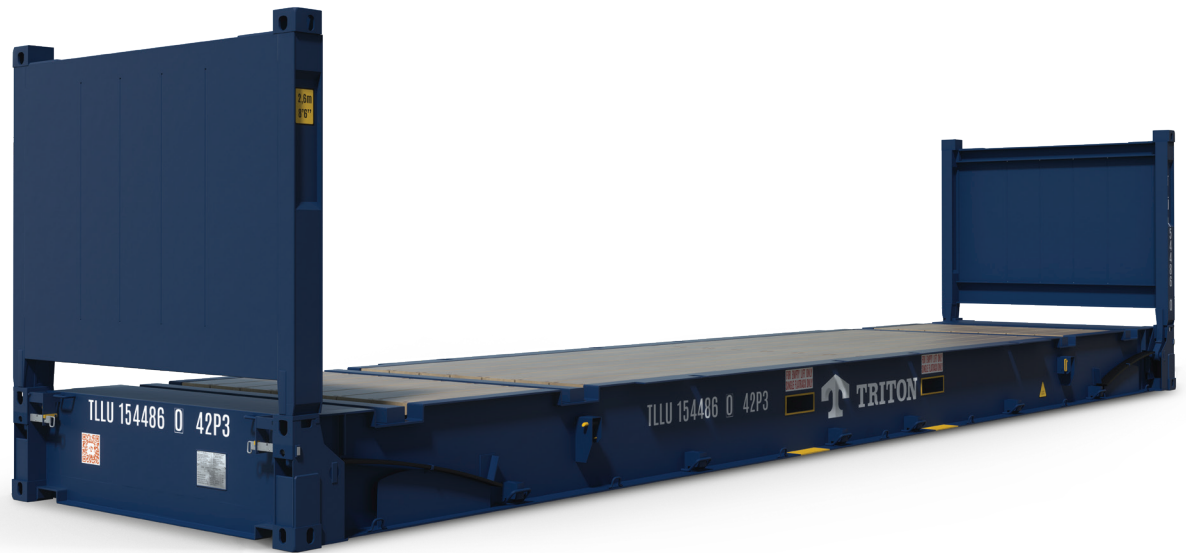
CAPACITY & WEIGHTS

| | | |
|------------------|-----------|------------|
| Max Gross | 45,000 kg | 99,200 lbs |
| Payload | 42,000 kg | 92,590 lbs |
| Tare | 3,000 kg | 6,640 lbs |



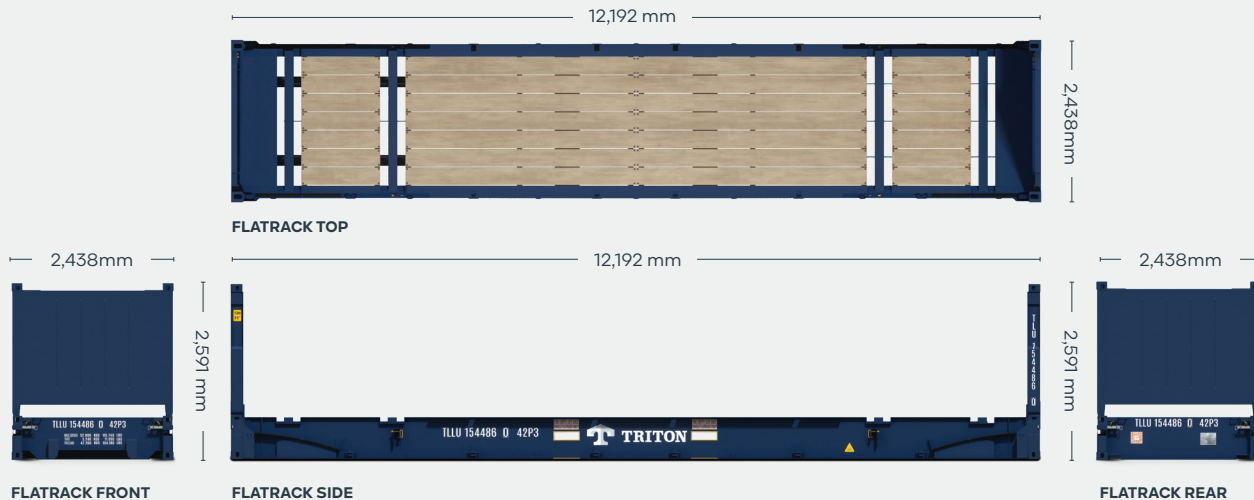
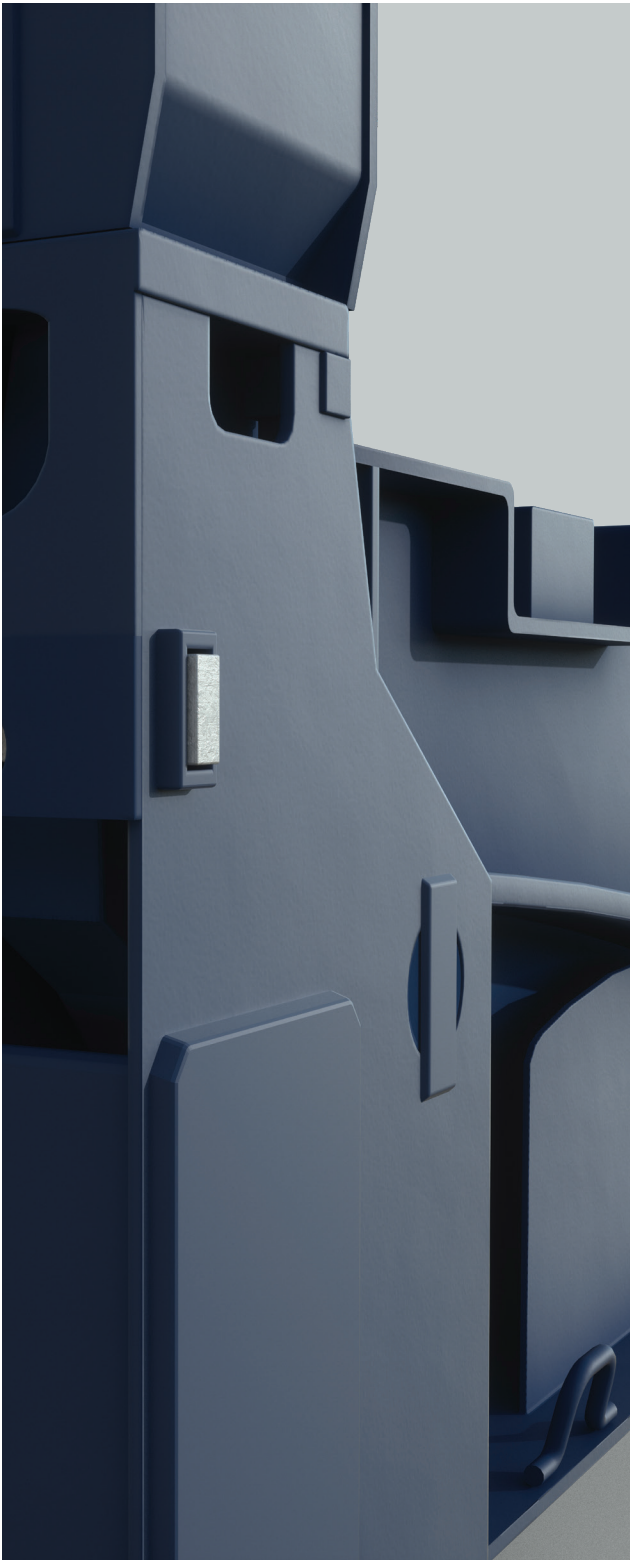

CLASSIFICATION
Lease
Available via Triton's
global network of supply
locations.

40ft Flush Folding Flatracks



FEATURES

- Built to carry heavy or oversized cargoes
- Great for specialized shipments of steel, pipes, drums and machinery
- Forklift pockets for easy empty handling
- Heavy duty steel frames and thick plank floors and lashing rings all around
- With flush folding end frames to allow for efficient stacking and repositioning
- Triton's industry leading new production testing and inspection criteria ensures the highest quality container
- Available in the high demand hub ports
- Backed up by Triton's global network of supply locations and dedicated leasing and support teams
- Flexible lease terms to meet your company needs



DIMENSIONS (METRIC/IMPERIAL)

EXTERNAL DIMENSIONS

| | | |
|-------------------------------------|-----------|----------|
| Length (Base bottom casting) | 12,192 mm | 40' 0.0" |
| Width (Base bottom casting) | 2,438 mm | 8' 0.0" |
| Height (End frame up) | 2,591 mm | 8' 6.0" |
| Height (End frame down) | 648 mm | 2' 1.5" |

INTERNAL DIMENSIONS

| | | |
|---|-----------|-----------|
| Length (Between end panels) | 12,182 mm | 39' 11.6" |
| Width (Over bottom side rail) | 2,374 mm | 7' 9.5" |
| Height (Side rail to top castings) | 1,959 mm | 6' 5.1" |

CAPACITY & WEIGHTS

| | | |
|------------------|-----------|-------------|
| Max Gross | 52,500 kg | 115,740 lbs |
| Payload | 47,260 kg | 104,190 lbs |
| Tare | 5,240 kg | 11,550 lbs |


NOTE: The dimensions of containers correspond to ISO standards.

However, due to production tolerances, a difference in measurement is possible.

DISCLAIMER: Every effort is made to ensure this information is accurate, however Triton does not assume any liability for the accuracy of the information and content provided in marketing or information materials, or for the consequences resulting from using the information and content provided. Triton does not guarantee or claim that said information and content is exhaustive. Claims as to the exhaustive nature of said information and content are excluded. The information and content is only provided for advertising purposes and is non-binding. No explicit or implied warranties or guarantees are made. The container displayed only represents a sample of the entire fleet.

The following items are registered or unregistered service marks in the United States and/or foreign jurisdictions pursuant to applicable intellectual property law and are the property of Triton International Limited and its subsidiaries: Triton® and TAL®.



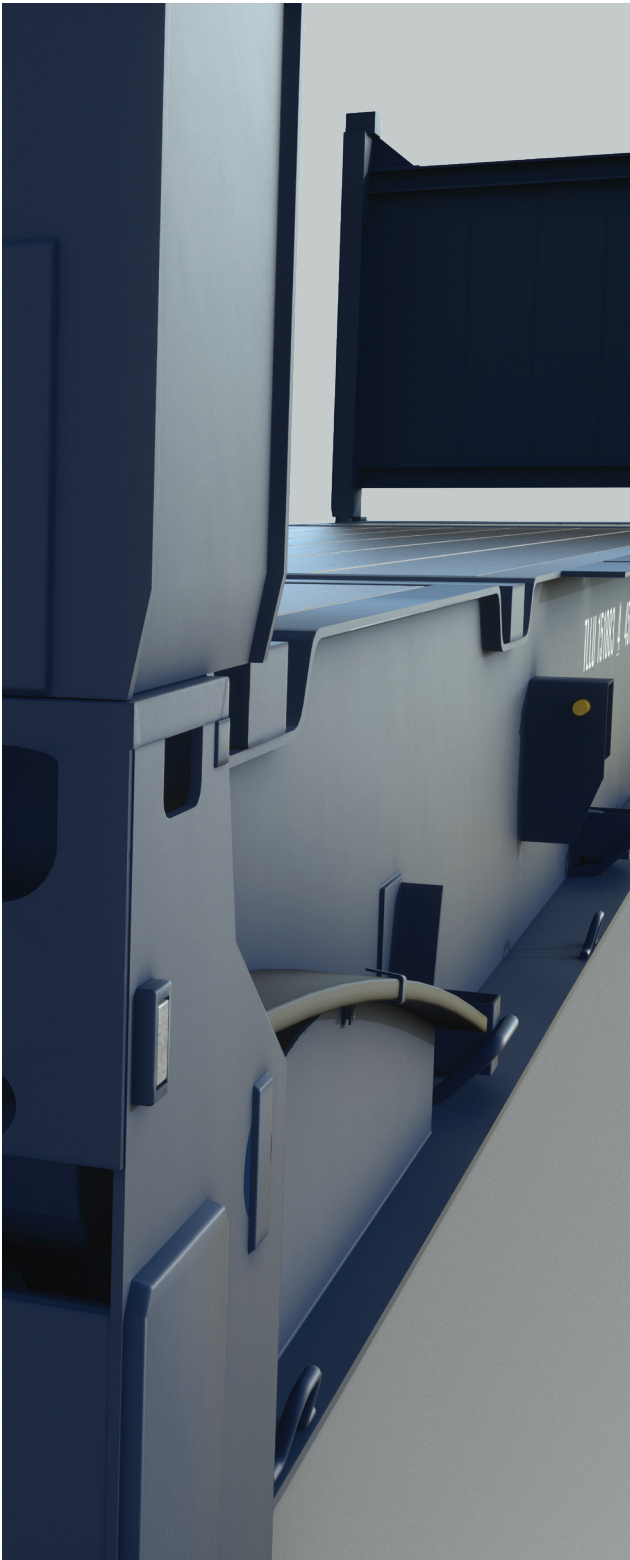

CLASSIFICATION
Lease
Available via Triton's
global network of supply
locations.

40ft High Cube Flush Folding Flatracks



FEATURES

- Additional height provides extra capacity for your goods
- Built to carry heavy or out of gauge cargoes
- Heavy duty steel frames and thick plank floors
- Great for specialized shipments of steel, pipes, drums and machinery
- With flush folding end frames to allow for efficient stacking
- Triton's industry leading new production testing and inspection criteria ensures the highest quality container
- Backed up by Triton's global network of supply locations and dedicated leasing and support teams
- Flexible lease terms to meet your company needs



DIMENSIONS (METRIC/IMPERIAL)

EXTERNAL DIMENSIONS

| | | |
|-------------------------------------|-----------|----------|
| Length (Base bottom casting) | 12,192 mm | 40' 0.0" |
| Width (Base bottom casting) | 2,438 mm | 8' 0.0" |
| Height (End frame up) | 2,896 mm | 9' 6.0" |
| Height (End frame down) | 648 mm | 2' 1.5" |

INTERNAL DIMENSIONS

| | | |
|---|-----------|-----------|
| Length (Between end panels) | 12,182 mm | 39' 11.6" |
| Width (Over bottom side rail) | 2,374 mm | 7' 9.5" |
| Height (Side rail to top castings) | 2,264 mm | 7' 5.1" |

CAPACITY & WEIGHTS

| | | |
|------------------|-----------|-------------|
| Max Gross | 52,500 kg | 115,740 lbs |
| Payload | 47,220 kg | 104,100 lbs |
| Tare | 5,280 kg | 11,640 lbs |

NOTE: The dimensions of containers correspond to ISO standards.

However, due to production tolerances, a difference in measurement is possible.

DISCLAIMER: Every effort is made to ensure this information is accurate, however Triton does not assume any liability for the accuracy of the information and content provided in marketing or information materials, or for the consequences resulting from using the information and content provided. Triton does not guarantee or claim that said information and content is exhaustive. Claims as to the exhaustive nature of said information and content are excluded. The information and content is only provided for advertising purposes and is non-binding. No explicit or implied warranties or guarantees are made. The container displayed only represents a sample of the entire fleet.

The following items are registered or unregistered service marks in the United States and/or foreign jurisdictions pursuant to applicable intellectual property law and are the property of Triton International Limited and its subsidiaries: Triton® and TAL®.



CLASSIFICATION

Lease

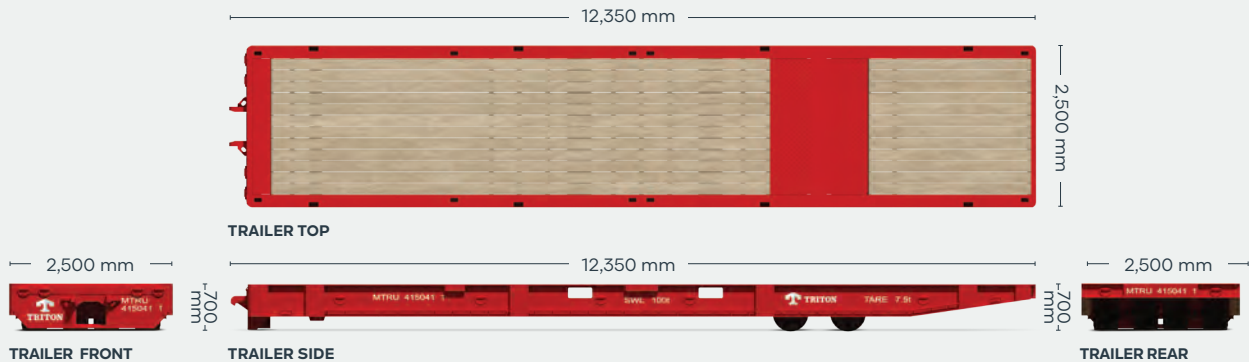
Available via Triton's global network of supply locations.

40ft Roll Trailer



FEATURES

- Available in 40ft length
- Tonnage rating from 60 to 120 tons
- Payload is specifically designed for the movement of products such as high-value cargo such as yachts, rail carriages, steel and cables.
- Triton's industry leading new production testing and inspection criteria ensures the highest quality unit.
- Available globally.
- Flexible lease terms to meet your company needs.
- Backed up by Triton's global network of supply locations and dedicated leasing and support teams.



DIMENSIONS (METRIC/IMPERIAL)

EXTERNAL DIMENSIONS

| | | |
|--------------------|-----------|----------|
| Length | 12,350 mm | 40' 6.2" |
| Width | 2,500 mm | 8' 2.4" |
| Height | 700 mm | 2' 3.6" |
| Over the wheel set | 730 mm | 2' 4.7" |
| Ground clearance | 218 mm | 0' 8.6" |

CAPACITY & WEIGHTS

| | |
|----------|----------|
| Capacity | 100 tons |
| Tare | 7.5 tons |

DISCLAIMER: Every effort is made to ensure this information is accurate, however Triton does not assume any liability for the accuracy of the information and content provided in marketing or information materials, or for the consequences resulting from using the information and content provided. Triton does not guarantee or claim that said information and content is exhaustive. Claims as to the exhaustive nature of said information and content are excluded. The information and content is only provided for advertising purposes and is non-binding. No explicit or implied warranties or guarantees are made. The container displayed only represents a sample of the entire fleet. The following items are registered or unregistered service marks in the United States and/or foreign jurisdictions pursuant to applicable intellectual property law and are the property of Triton International Limited and its subsidiaries: Triton® and TAL®.



CLASSIFICATION

Lease

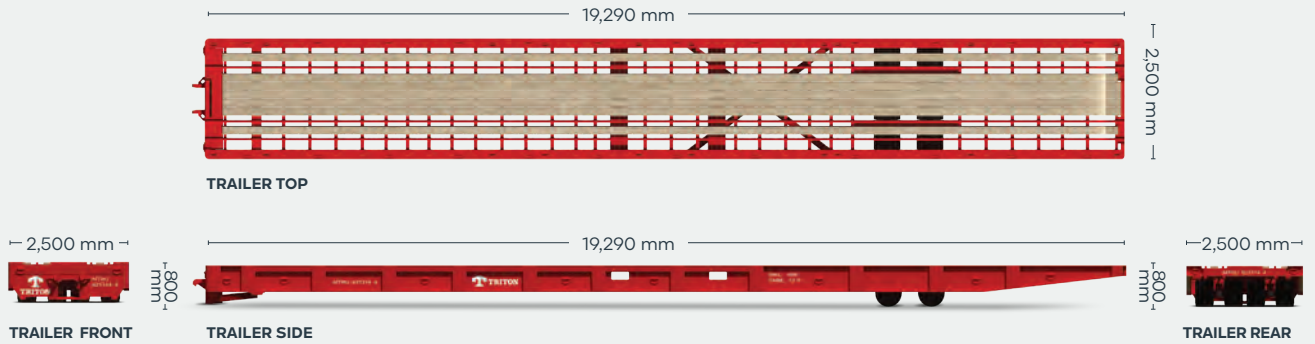
Available via Triton's global network of supply locations.

62ft Roll Trailer



FEATURES

- Available in 62ft length
- Supplied with or without 3 rails
- Designed to handle 2 track gauges: Standard Gauge (1,435mm track) and Three Foot Six Inch Gauge (1,067mm track)
- Tonnage rating from 90 to 100 tons
- Payload is specifically designed for the movement of products such as rail-cars and over length cargo
- Triton's industry leading new production testing and inspection criteria ensures the highest quality unit
- Backed up by Triton's global network of supply locations and dedicated leasing and support teams
- Available globally
- Flexible lease terms to meet your company needs



DIMENSIONS (METRIC/IMPERIAL)

EXTERNAL DIMENSIONS

| | | |
|--------------------|-----------|----------|
| Length | 19,290 mm | 63' 3.4" |
| Width | 2,500 mm | 8' 2.4" |
| Height | 800 mm | 2' 7.5" |
| Over the wheel set | 850 mm | 2' 9.4" |
| Ground clearance | 282 mm | 11.1" |

CAPACITY & WEIGHTS

| | |
|-------------------------|-----------|
| Capacity (with 3 rails) | 100 tons |
| Tare (with 3 rails) | 12.9 tons |

DISCLAIMER: Every effort is made to ensure this information is accurate, however Triton does not assume any liability for the accuracy of the information and content provided in marketing or information materials, or for the consequences resulting from using the information and content provided. Triton does not guarantee or claim that said information and content is exhaustive. Claims as to the exhaustive nature of said information and content are excluded. The information and content is only provided for advertising purposes and is non-binding. No explicit or implied warranties or guarantees are made. The container displayed only represents a sample of the entire fleet.

The following items are registered or unregistered service marks in the United States and/or foreign jurisdictions pursuant to applicable intellectual property law and are the property of Triton International Limited and its subsidiaries: Triton® and TAL®.

HERE. THERE. EVERYWHERE

We supply the world

Triton is the largest lessor of intermodal containers in the world with over 7 million TEU of containers. Our services are available in 89 countries around the globe. So, no matter where you need containers, we'll have them nearby. To find your nearest Triton Container Sales manager visit www.tritoncontainer.com.



**Global inventory of
cargoworthy containers
for lease and sale.**



**Unrivalled container
supply at competitive
prices.**



**Outstanding and
highly responsive
customer services.**



**Global network of 20 offices
and 3 independent agencies
across 16 countries.**



**Equipment
built to the
highest quality.**



**Our size, strength and reliability
make us the go-to supplier of
intermodal shipping containers.**



We're the biggest for a reason, contact our friendly experts and experience Triton's world-leading service and cost savings today. Imagine what we can do together.

www.tritoncontainer.com