



TRITON

OUR SECTORS

Humanitarian aid

Triton Containers can transport and store essential aid or be repurposed into critical facilities.



OUR SECTORS – HUMANITARIAN AID

Transport and store critical supplies in emergencies

Triton Containers are ideal for large scale aid operations. We provide cost effective on-site storage for critical aid supplies with flexible redelivery options globally.

Fast access to our global inventory

Humanitarian action saves lives and helps alleviate suffering in countries devastated by life-changing crises such as hurricanes, famines, epidemics, and wars. In emergency and relief scenarios, Triton Containers can be used to move humanitarian cargo to the places that need it most.

Dry and Refrigerated Shipping Containers can safely transport vast amounts of critical goods across the world, including medical equipment, food, clean water, educational supplies, clothing, blankets, and donated goods. In

addition, repurposing our portable containers into storage facilities located within a short distance of affected areas can help volunteers provide beneficiaries with supplies quickly.

Triton Dry Containers have durable and simple construction and are built to withstand the most extreme conditions. As a result, it is possible to convert them into a wide range of facilities, including fully functional clinics to help provide much-needed health care.

Supporting Doctors Without Borders

We are proud to support Doctors Without Borders/Médecins Sans Frontières'. As a global industry leader, we are committed to supporting this worthy cause in their effort to provide lifesaving medical humanitarian aid programs across the world. To help raise awareness and funds, we created a social media campaign #Triton4MSF which

encourages people to snap and share images of our special edition MSF containers using our hashtag. In return, we donate \$100 to MSF up to a maximum of \$50,000 per year. Please view our corporate website for more information.

PLEASE NOTE: The following pages showcase a small sample of products in the Triton global inventory. We stock a wide range of products for lease and sale in various conditions. Get in touch with your local Triton representative for more information.



20ft Dry Container



CLASSIFICATION

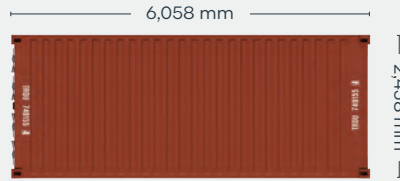
Lease

Available via Triton's global network of supply locations.



FEATURES

- Manufactured with rust resistant corten steel
- Secure and weatherproof, with vents to allow airflow
- Resistant to damage and corrosion
- Superior paint systems
- Triton's industry leading new production testing and inspection criteria ensures the highest quality container
- Incredibly versatile
- Backed up by Triton's global network of supply locations and dedicated leasing and support teams
- Available globally
- IICL-6 repair criteria saves cost at off-hire
- Damage Protection Plan available to reduce costs and time at off-hire
- Flexible lease terms to meet your company needs



CONTAINER ROOF



CONTAINER FRONT

CONTAINER SIDE

CONTAINER REAR

DIMENSIONS (METRIC/IMPERIAL)

EXTERNAL DIMENSIONS

Length	6,058 mm	19' 10.5"
Width	2,438 mm	8' 0.0"
Height	2,591 mm	8' 6.0"

INTERNAL DIMENSIONS

Length	5,898 mm	19' 4.2"
Width	2,352 mm	7' 8.6"
Height	2,393 mm	7' 10.2"

DOOR OPENING

Width	2,340 mm	7' 8.1"
Height	2,280 mm	7' 5.8"

CAPACITY & WEIGHTS

Inside Cubic Capacity	33.2 m ³	1172 ft ³
Max Gross	30,480 kg	67,200 lbs
Payload	28,380 kg	62,570 lbs
Tare	2,100 kg	4,630 lbs

NOTE: The dimensions and door openings of all containers correspond to ISO standards. However, due to production tolerances, a difference in measurement is possible.

DISCLAIMER: Every effort is made to ensure this information is accurate, however Triton does not assume any liability for the accuracy of the information and content provided in marketing or information materials, or for the consequences resulting from using the information and content provided. Triton does not guarantee or claim that said information and content is exhaustive. Claims as to the exhaustive nature of said information and content are excluded. The information and content is only provided for advertising purposes and is non-binding. No explicit or implied warranties or guarantees are made. The container displayed only represents a sample of the entire fleet.

The following items are registered or unregistered service marks in the United States and/or foreign jurisdictions pursuant to applicable intellectual property law and are the property of Triton International Limited and its subsidiaries: Triton® and TAL®.



CLASSIFICATION

Lease

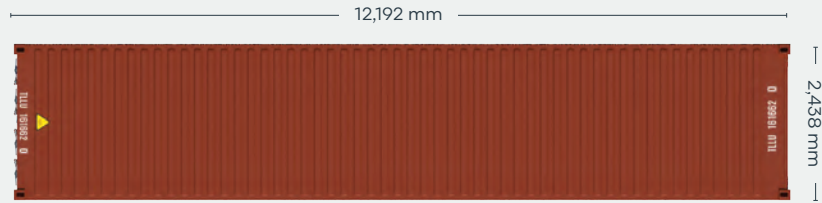
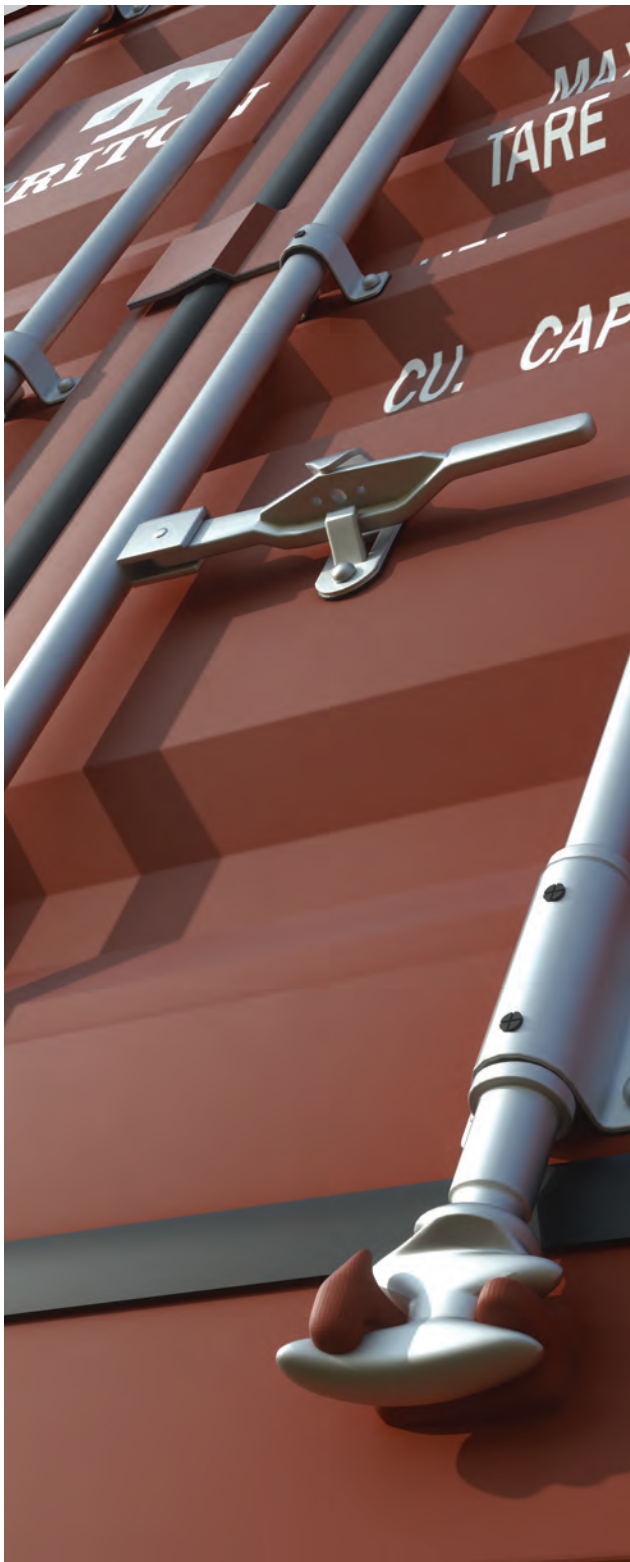
Available via Triton's global network of supply locations.

40ft Dry Container

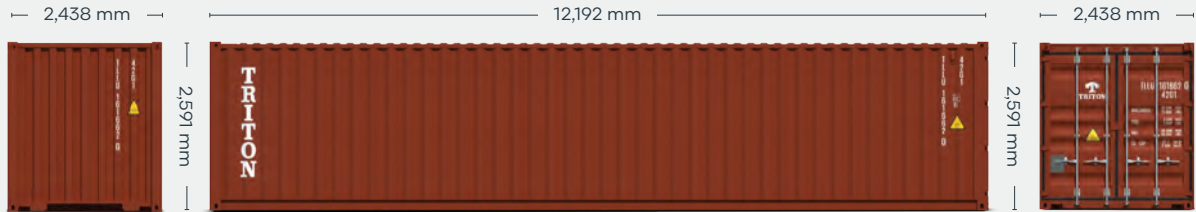


FEATURES

- Manufactured with rust resistant corten steel
- Secure and weatherproof, with vents to allow airflow
- Resistant to damage and corrosion
- Superior paint systems
- Triton's industry leading new production testing and inspection criteria ensures the highest quality container
- Incredibly versatile
- Backed up by Triton's global network of supply locations and dedicated leasing and support teams
- Available globally
- IICL-6 repair criteria saves cost at off-hire
- Damage Protection Plan available to reduce costs and time at off-hire
- Flexible lease terms to meet your company needs



CONTAINER ROOF



CONTAINER FRONT

CONTAINER SIDE

CONTAINER REAR

DIMENSIONS (METRIC/IMPERIAL)

EXTERNAL DIMENSIONS

Length	12,192 mm	40' 0.0"
Width	2,438 mm	8' 0.0"
Height	2,591 mm	8' 6.0"

INTERNAL DIMENSIONS

Length	12,032 mm	39' 5.7"
Width	2,352 mm	7' 8.6"
Height	2,393 mm	7' 10.2"

DOOR OPENING

Width	2,340 mm	7' 8.1"
Height	2,280 mm	7' 5.8"

CAPACITY & WEIGHTS

Inside Cubic Capacity	67.7 m ³	2,390 ft ³
Max Gross	32,500 kg	71,650 lbs
Payload	28,960 kg	63,850 lbs
Tare	3,540 kg	7,800 lbs

NOTE: The dimensions and door openings of all containers correspond to ISO standards. However, due to production tolerances, a difference in measurement is possible.

DISCLAIMER: Every effort is made to ensure this information is accurate, however Triton does not assume any liability for the accuracy of the information and content provided in marketing or information materials, or for the consequences resulting from using the information and content provided. Triton does not guarantee or claim that said information and content is exhaustive. Claims as to the exhaustive nature of said information and content are excluded. The information and content is only provided for advertising purposes and is non-binding. No explicit or implied warranties or guarantees are made. The container displayed only represents a sample of the entire fleet.

The following items are registered or unregistered service marks in the United States and/or foreign jurisdictions pursuant to applicable intellectual property law and are the property of Triton International Limited and its subsidiaries: Triton® and TAL®.



CLASSIFICATION

Lease

Available via Triton's global network of supply locations.

40ft High Cube Dry Container



FEATURES

- Additional height provides extra internal cubic capacity, which means greater interior stacking capacity for your goods
- Manufactured with rust resistant corten steel
- Superior paint systems
- Resistant to damage and corrosion
- Secure and weatherproof, with vents to allow airflow
- Incredibly versatile
- Triton's industry leading new production testing and inspection criteria ensures the highest quality container
- Backed up by Triton's global network of supply locations and dedicated leasing and support teams
- Available globally
- IICL-6 repair criteria saves cost at off-hire
- Damage Protection Plan available to reduce costs and time at off-hire
- Flexible lease terms to meet your company needs



CONTAINER ROOF



CONTAINER FRONT

CONTAINER SIDE

CONTAINER REAR

DIMENSIONS (METRIC/IMPERIAL)

EXTERNAL DIMENSIONS

Length	12,192 mm	40' 0.0"
Width	2,438 mm	8' 0.0"
Height	2,896 mm	9' 6.0"

INTERNAL DIMENSIONS

Length	12,032 mm	39' 5.7"
Width	2,352 mm	7' 8.6"
Height	2,698 mm	8' 10.2"

DOOR OPENING

Width	2,340 mm	7' 8.1"
Height	2,585 mm	8' 5.8"

CAPACITY & WEIGHTS

Inside Cubic Capacity	76.4 m ³	2,700 ft ³
Max Gross	32,500 kg	71,650 lbs
Payload	28,800 kg	63,490 lbs
Tare	3,700 kg	8,160 lbs

NOTE: The dimensions and door openings of all containers correspond to ISO standards. However, due to production tolerances, a difference in measurement is possible.

DISCLAIMER: Every effort is made to ensure this information is accurate, however Triton does not assume any liability for the accuracy of the information and content provided in marketing or information materials, or for the consequences resulting from using the information and content provided. Triton does not guarantee or claim that said information and content is exhaustive. Claims as to the exhaustive nature of said information and content are excluded. The information and content is only provided for advertising purposes and is non-binding. No explicit or implied warranties or guarantees are made. The container displayed only represents a sample of the entire fleet.

The following items are registered or unregistered service marks in the United States and/or foreign jurisdictions pursuant to applicable intellectual property law and are the property of Triton International Limited and its subsidiaries: Triton® and TAL®.



CLASSIFICATION

For Sale: Used

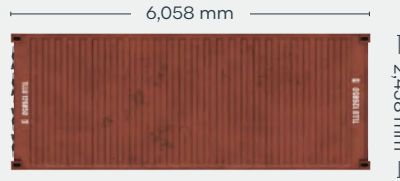
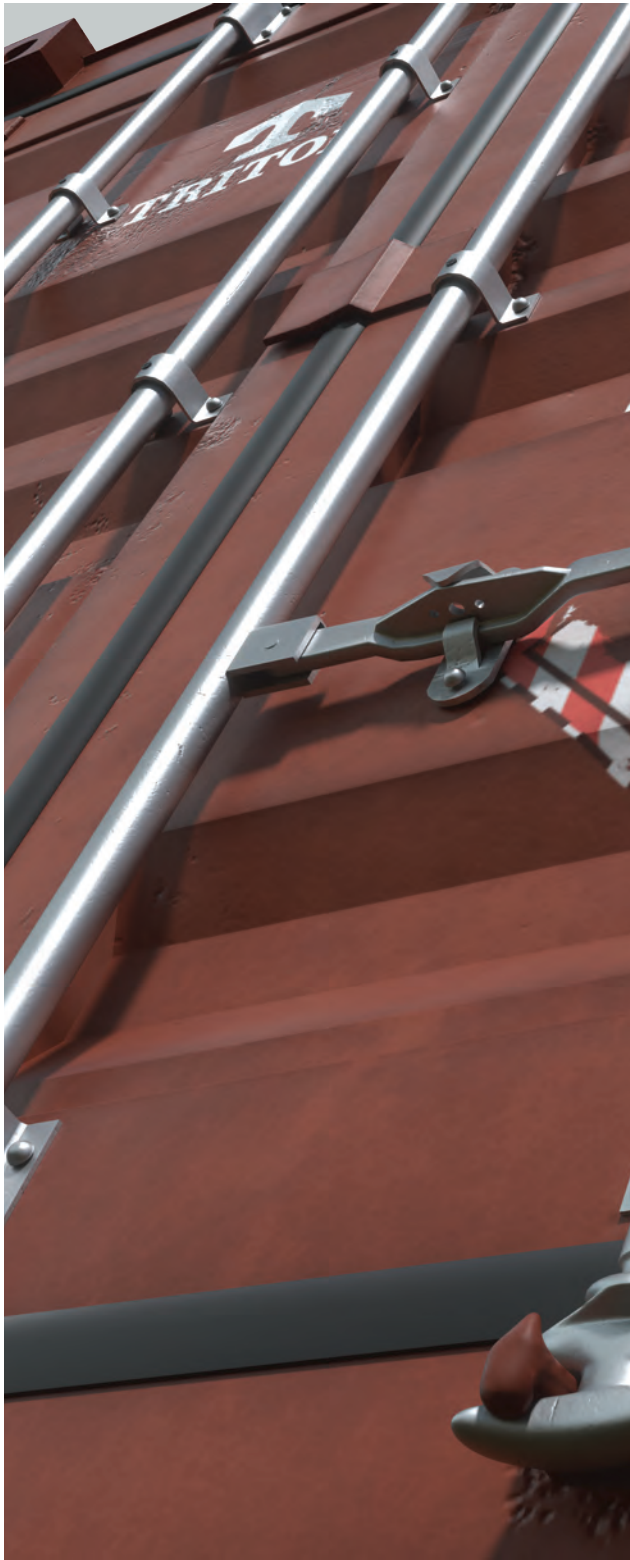
Available via Triton's global network of supply locations.

20ft Used Dry Container



FEATURES

- Available in a range of conditions to suit all needs, from cargo transportation to secure domestic storage
- Generally 11-15 years old when retired from service
- Constructed from rugged corten steel
- Durable and secure, with vents to allow airflow
- Resistant to damage and corrosion
- A variety of options available
- Incredibly versatile and suitable for customers to modify into a wide range of applications
- Available globally
- Backed up by Triton's global network of supply locations and dedicated sales and support teams
- Also available for Direct Delivery to buyer's facilities, providing significant cost savings on transport



CONTAINER ROOF



CONTAINER FRONT

CONTAINER SIDE

CONTAINER REAR

DIMENSIONS (METRIC/IMPERIAL)

EXTERNAL DIMENSIONS

Length	6,058 mm	19' 10.5"
Width	2,438 mm	8' 0.0"
Height	2,591 mm	8' 6.0"

INTERNAL DIMENSIONS

Length	5,898 mm	19' 4.2"
Width	2,352 mm	7' 8.6"
Height	2,393 mm	7' 10.2"

DOOR OPENING

Width	2,340 mm	7' 8.1"
Height	2,280 mm	7' 5.8"

CAPACITY & WEIGHTS

Inside Cubic Capacity	33.2 m ³	1172 ft ³
Max Gross	30,480 kg	67,200 lbs
Payload	28,090–28,580 kg	61,931–63,011 lbs
Tare	1,900–2,390 kg	4,189–5,269 lbs

NOTE: The dimensions and door openings of all containers correspond to ISO standards. However, due to production tolerances, a difference in measurement is possible.

DISCLAIMER: Every effort is made to ensure this information is accurate, however Triton does not assume any liability for the accuracy of the information and content provided in marketing or information materials, or for the consequences resulting from using the information and content provided. Triton does not guarantee or claim that said information and content is exhaustive. Claims as to the exhaustive nature of said information and content are excluded. The information and content is only provided for advertising purposes and is non-binding. No explicit or implied warranties or guarantees are made. The container displayed only represents a sample of the entire fleet.

The following items are registered or unregistered service marks in the United States and/or foreign jurisdictions pursuant to applicable intellectual property law and are the property of Triton International Limited and its subsidiaries: Triton® and TAL®.



CLASSIFICATION

For Sale: Used

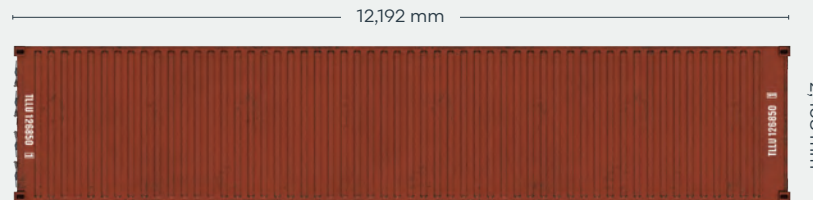
Available via Triton's global network of supply locations.

40ft Used Dry Container



FEATURES

- Available in a range of conditions to suit all needs, from cargo transportation to secure domestic storage
- Generally 11-15 years old when retired from service
- Constructed from rugged corten steel
- Durable and secure, with vents to allow airflow
- Resistant to damage and corrosion
- A variety of options available
- Incredibly versatile and suitable for customers to modify into a wide range of applications
- Available globally
- Backed up by Triton's global network of supply locations and dedicated sales and support teams
- Also available for direct delivery to buyer's facilities, providing significant cost savings on transport



CONTAINER ROOF



CONTAINER FRONT

CONTAINER SIDE

CONTAINER REAR

DIMENSIONS (METRIC/IMPERIAL)

EXTERNAL DIMENSIONS

Length	12,192 mm	40' 0.0"
Width	2,438 mm	8' 0.0"
Height	2,591 mm	8' 6.0"

INTERNAL DIMENSIONS

Length	12,032 mm	39' 5.7"
Width	2,352 mm	7' 8.6"
Height	2,393 mm	7' 10.2"

DOOR OPENING

Width	2,340 mm	7' 8.1"
Height	2,280 mm	7' 5.8"

CAPACITY & WEIGHTS

Inside Cubic Capacity	67.7 m ³	2390 ft ³
Max Gross	30,480–32,500 kg	67,200–71,650 lbs
Payload	26,980–29,070 kg	59,484–64,090 lbs
Tare	3,430–3,920 kg	7,560–8,640 lbs

NOTE: The dimensions and door openings of all containers correspond to ISO standards. However, due to production tolerances, a difference in measurement is possible.

DISCLAIMER: Every effort is made to ensure this information is accurate, however Triton does not assume any liability for the accuracy of the information and content provided in marketing or information materials, or for the consequences resulting from using the information and content provided. Triton does not guarantee or claim that said information and content is exhaustive. Claims as to the exhaustive nature of said information and content are excluded. The information and content is only provided for advertising purposes and is non-binding. No explicit or implied warranties or guarantees are made. The container displayed only represents a sample of the entire fleet.

The following items are registered or unregistered service marks in the United States and/or foreign jurisdictions pursuant to applicable intellectual property law and are the property of Triton International Limited and its subsidiaries: Triton® and TAL®.



CLASSIFICATION

For Sale: New

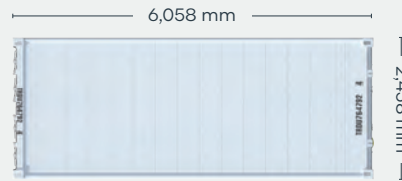
Available via Triton's global network of supply locations.

20ft Refrigerated Container

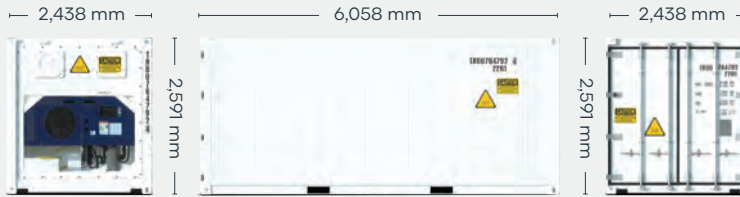


FEATURES

- Designed for safe transportation of perishable food, beverages and temperature sensitive cargo
- Ideal for on-site temperature controlled storage
- Strong, robust, insulated and repair friendly
- Resistant to bacteria
- Low heat leakage values
- Low GWP refrigerants compatible
- State-of-the-art design and low power consumption makes units highly efficient
- With HGSS roof end panels, vacuum valve, T-bar flooring and interior aluminum scuff lining
- Provisioned for track & trace feature
- Triton's industry leading new production testing and inspection criteria ensures the highest quality container
- Can be ordered with Carrier or Thermo King machinery, with 3 Phase Power and CFC friendly refrigerant
- Backed up by Triton's global network of supply locations and dedicated sales and support teams
- Available globally



REEFER ROOF



REEFER FRONT

REEFER SIDE

REEFER REAR

DIMENSIONS (METRIC/IMPERIAL)

EXTERNAL DIMENSIONS

Length	6,058 mm	19' 10.5"
Width	2,438 mm	8' 0.0"
Height	2,591 mm	8' 6.0"

INTERNAL DIMENSIONS

Length	5,454 mm	17' 10.7"
Width	2,290 mm	7' 6.2"
Height	2,276 mm	7' 5.6"

DOOR OPENING

Width	2,294 mm	7' 6.3"
Height	2,264 mm	7' 5.1"

CAPACITY & WEIGHTS

Inside Cubic Capacity	28.4 m ³	1003 ft ³
Max Gross	30,480 kg	67,200 lbs
Payload	27,650 kg	60,960 lbs
Tare*	2,830 kg	6,240 lbs

*Tare can vary slightly based on reefer machine type.

NOTE: The dimensions and door openings of all containers correspond to ISO standards. However, due to production tolerances, a difference in measurement is possible.

DISCLAIMER: Every effort is made to ensure this information is accurate, however Triton does not assume any liability for the accuracy of the information and content provided in marketing or information materials, or for the consequences resulting from using the information and content provided. Triton does not guarantee or claim that said information and content is exhaustive. Claims as to the exhaustive nature of said information and content are excluded. The information and content is only provided for advertising purposes and is non-binding. No explicit or implied warranties or guarantees are made. The container displayed only represents a sample of the entire fleet.

The following items are registered or unregistered service marks in the United States and/or foreign jurisdictions pursuant to applicable intellectual property law and are the property of Triton International Limited and its subsidiaries: Triton® and TAL®.



40ft High Cube Refrigerated Container



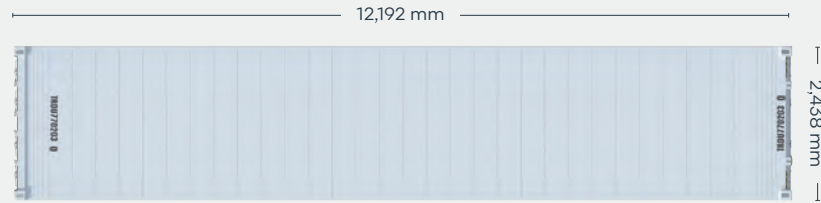
CLASSIFICATION

Lease

Available via Triton's global network of supply locations.

FEATURES

- Additional height provides extra internal cubic capacity, which means greater interior stacking capacity for your goods
- Designed for safe transportation of temperature sensitive cargo and frozen and perishable goods. (Food-grade approved)
- Ideal for on-site temperature controlled storage
- Strong, robust, insulated and repair friendly
- State-of-the-art design and low power consumption makes units highly efficient
- Standard features: HGSS roof end panels, T-bar flooring and interior aluminum scuff lining
- Provisioned for track & trace feature
- Triton's industry leading new production testing and inspection criteria ensures the highest quality container
- Resistant to bacteria
- Low heat leakage values
- Low GWP refrigerants compatible
- Can be ordered with Carrier, Starcool, Daikin or Thermo King machinery, with 3 Phase Power. These leading brands offer worldwide availability for parts and service
- Backed up by Triton's global network of supply locations and dedicated leasing and support teams
- Available globally



REEFER ROOF



REEFER FRONT

REEFER SIDE

REEFER REAR

DIMENSIONS (METRIC/IMPERIAL)

EXTERNAL DIMENSIONS

Length	12,192 mm	40' 0.0"
Width	2,438 mm	8' 0.0"
Height	2,896 mm	9' 6.0"

INTERNAL DIMENSIONS

Length	11,588 mm	38' 0.2"
Width	2,290 mm	7' 6.2"
Height	2,547.5 mm	8' 4.3"

DOOR OPENING

Width	2,294 mm	7' 6.3"
Height	2,569 mm	8' 5.1"

CAPACITY & WEIGHTS

Inside Cubic Capacity	67.6 m ³	2,387 ft ³
Max Gross	35,000 kg	77,160 lbs
Payload	30,440 kg	67,110 lbs
Tare*	4,560 kg	10,050 lbs

*Tare can vary slightly based on reefer machine type.

NOTE: The dimensions and door openings of all containers correspond to ISO standards. However, due to production tolerances, a difference in measurement is possible.

DISCLAIMER: Every effort is made to ensure this information is accurate, however Triton does not assume any liability for the accuracy of the information and content provided in marketing or information materials, or for the consequences resulting from using the information and content provided. Triton does not guarantee or claim that said information and content is exhaustive. Claims as to the exhaustive nature of said information and content are excluded. The information and content is only provided for advertising purposes and is non-binding. No explicit or implied warranties or guarantees are made. The container displayed only represents a sample of the entire fleet.

The following items are registered or unregistered service marks in the United States and/or foreign jurisdictions pursuant to applicable intellectual property law and are the property of Triton International Limited and its subsidiaries: Triton® and TAL®.

HERE. THERE. EVERYWHERE

We supply the world

Triton is the largest lessor of intermodal containers in the world with over 7 million TEU of containers. Our services are available in 89 countries around the globe. So, no matter where you need containers, we'll have them nearby. To find your nearest Triton Container Sales manager visit www.tritoncontainer.com.



**Global inventory of
cargoworthy containers
for lease and sale.**



**Unrivalled container
supply at competitive
prices.**



**Outstanding and
highly responsive
customer services.**



**Global network of 20 offices
and 3 independent agencies
across 16 countries.**



**Equipment
built to the
highest quality.**



**Our size, strength and reliability
make us the go-to supplier of
intermodal shipping containers.**



TRITON

We're the biggest for a reason, contact our friendly experts and experience Triton's world-leading service and cost savings today. Imagine what we can do together.

www.tritoncontainer.com