



# TRITON

OUR SECTORS

## Mining

Efficiently and reliably  
providing durable equipment.



## OUR SECTORS – MINING

# Efficient, reliable, and durable equipment

Our durable equipment is designed to withstand even the harshest climates and conditions. At Triton, we appreciate that mining is an asset-intensive industry that often utilizes bulky, oversized equipment, and big machinery.

We work with customers to overcome logistical challenges by leasing and selling a wide range of Flatracks, Tank Containers, Open Top Containers, and Dry Containers. Our customers' interests are at the heart of everything we do. The Triton Container Sales team includes 45 sales and service specialists, supported by our best-in-class operational infrastructure. This experienced team sells new and used containers to companies operating in the mining sector for storage and one-way shipment. Additionally, our global network can assist in selling containers when they are discharged at their final destination.

### Buy or lease Dry Containers

Triton Dry Containers are frequently utilized in remote mining locations to deliver mission-critical supplies. Upon arrival, they are often repurposed as cost-effective storage or facilities.

Their simple design makes them incredibly versatile, and when purchased, customers can modify them into contemporary spaces by inserting air conditioning, plumbing, and partitions to create rooms.

### Buy or lease ISO Tank Containers

ISO Tank Containers are used as a safe, flexible, and cost-effective means to ship and store the chemicals used in the mining process directly to where they are needed, including, but not limited to, the mine itself.

### Buy or lease Refrigerated Containers

Constructed to comply with mine site and offshore safety standards, Triton Refrigerated Containers will keep food and heat-sensitive items safe and at consistent temperatures at all times.

**PLEASE NOTE:** The following pages showcase a small sample of products in the Triton global inventory. We stock a wide range of products for lease and sale in various conditions. Get in touch with your local Triton representative for more information.



## CLASSIFICATION

### For Sale: New

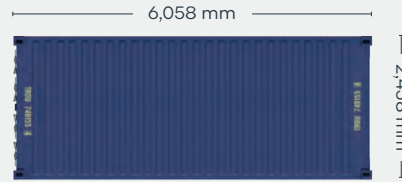
Available via Triton's global network of supply locations.

# 20ft Dry Container



## FEATURES

- Manufactured with rust resistant corten steel
- Secure and weatherproof, with vents to allow airflow
- Resistant to damage and corrosion
- Superior paint systems
- Great options including 80 micron floor coating, lock boxes, waist-high door locking handles
- Incredibly versatile and suitable for customers to modify into a wide range of applications
- Advance orders in your preferred color (minimum volume required)
- Triton's industry leading new production testing and inspection criteria ensures the highest quality container
- Moved from factory to most major ports in the world
- Backed up by Triton's global network of supply locations and dedicated sales and support teams
- Available globally



CONTAINER ROOF



CONTAINER FRONT

CONTAINER SIDE

CONTAINER REAR

## DIMENSIONS (METRIC/IMPERIAL)

### EXTERNAL DIMENSIONS

<b>Length</b>	6,058 mm	19' 10.5"
<b>Width</b>	2,438 mm	8' 0.0"
<b>Height</b>	2,591 mm	8' 6.0"

### INTERNAL DIMENSIONS

<b>Length</b>	5,898 mm	19' 4.2"
<b>Width</b>	2,352 mm	7' 8.6"
<b>Height</b>	2,393 mm	7' 10.2"

### DOOR OPENING

<b>Width</b>	2,343 mm	7' 8.2"
<b>Height</b>	2,280 mm	7' 5.8"

### CAPACITY & WEIGHTS

<b>Inside Cubic Capacity</b>	33 m <sup>3</sup>	1165.4 ft <sup>3</sup>
<b>Max Gross</b>	30,480 kg	67,200 lbs
<b>Payload</b>	28,450 kg	62,721 lbs
<b>Tare</b>	2,030 kg	4475 lbs

**NOTE:** The dimensions and door openings of all containers correspond to ISO standards. However, due to production tolerances, a difference in measurement is possible.

**DISCLAIMER:** Every effort is made to ensure this information is accurate, however Triton does not assume any liability for the accuracy of the information and content provided in marketing or information materials, or for the consequences resulting from using the information and content provided. Triton does not guarantee or claim that said information and content is exhaustive. Claims as to the exhaustive nature of said information and content are excluded. The information and content is only provided for advertising purposes and is non-binding. No explicit or implied warranties or guarantees are made. The container displayed only represents a sample of the entire fleet.

The following items are registered or unregistered service marks in the United States and/or foreign jurisdictions pursuant to applicable intellectual property law and are the property of Triton International Limited and its subsidiaries: Triton® and TAL®.



#### CLASSIFICATION

#### For Sale: Used

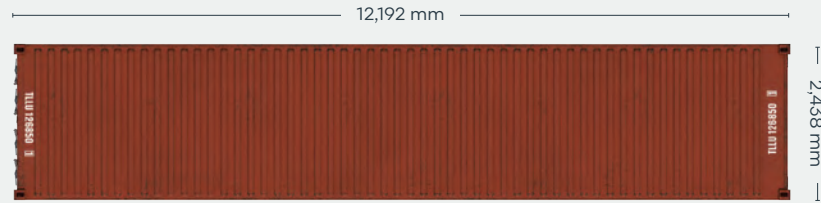
Available via Triton's global network of supply locations.

# 40ft Used Dry Container

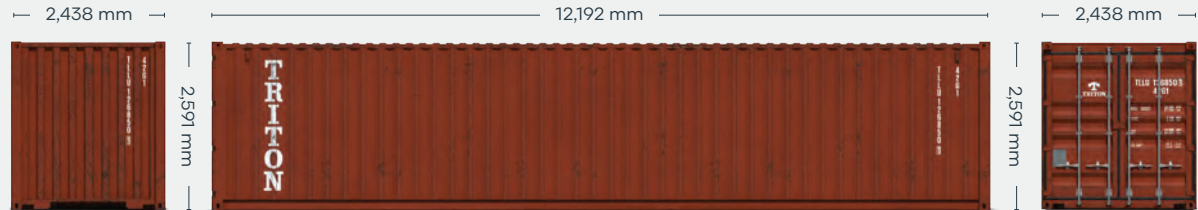


#### FEATURES

- Available in a range of conditions to suit all needs, from cargo transportation to secure domestic storage
- Generally 11-15 years old when retired from service
- Constructed from rugged corten steel
- Durable and secure, with vents to allow airflow
- Resistant to damage and corrosion
- A variety of options available
- Incredibly versatile and suitable for customers to modify into a wide range of applications
- Available globally
- Backed up by Triton's global network of supply locations and dedicated sales and support teams
- Also available for direct delivery to buyer's facilities, providing significant cost savings on transport



CONTAINER ROOF



CONTAINER FRONT

CONTAINER SIDE

CONTAINER REAR

## DIMENSIONS (METRIC/IMPERIAL)

### EXTERNAL DIMENSIONS

<b>Length</b>	12,192 mm	40' 0.0"
<b>Width</b>	2,438 mm	8' 0.0"
<b>Height</b>	2,591 mm	8' 6.0"

### INTERNAL DIMENSIONS

<b>Length</b>	12,032 mm	39' 5.7"
<b>Width</b>	2,352 mm	7' 8.6"
<b>Height</b>	2,393 mm	7' 10.2"

### DOOR OPENING

<b>Width</b>	2,340 mm	7' 8.1"
<b>Height</b>	2,280 mm	7' 5.8"

### CAPACITY & WEIGHTS

<b>Inside Cubic Capacity</b>	67.7 m <sup>3</sup>	2390 ft <sup>3</sup>
<b>Max Gross</b>	30,480–32,500 kg	67,200–71,650 lbs
<b>Payload</b>	26,980–29,070 kg	59,484–64,090 lbs
<b>Tare</b>	3,430–3,920 kg	7,560–8,640 lbs

**NOTE:** The dimensions and door openings of all containers correspond to ISO standards. However, due to production tolerances, a difference in measurement is possible.

**DISCLAIMER:** Every effort is made to ensure this information is accurate, however Triton does not assume any liability for the accuracy of the information and content provided in marketing or information materials, or for the consequences resulting from using the information and content provided. Triton does not guarantee or claim that said information and content is exhaustive. Claims as to the exhaustive nature of said information and content are excluded. The information and content is only provided for advertising purposes and is non-binding. No explicit or implied warranties or guarantees are made. The container displayed only represents a sample of the entire fleet.

The following items are registered or unregistered service marks in the United States and/or foreign jurisdictions pursuant to applicable intellectual property law and are the property of Triton International Limited and its subsidiaries: Triton® and TAL®.



## CLASSIFICATION

### Lease

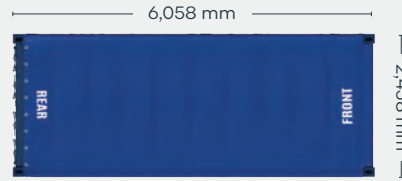
Available via Triton's global network of supply locations.

# 20ft Open Top Container



## FEATURES

- Corrugated steel panels with strong wooden floor to protect the cargo
- Designed for cargos that require special loading dimensions
- Removable door header
- Removable roof bows and durable tarpaulin with customs approved cable to cover the topside
- Two swingable doors with custom approved closures
- 1 1/8" thick marine wooden floors with center dividers
- Several lashing rings and bars inside the container to secure the cargo
- Forklift pockets for easy empty handling
- Triton's industry leading new production testing and inspection criteria ensures the highest quality container
- Backed up by Triton's global network of supply locations and dedicated leasing and support teams
- Available in the high demand hub ports
- Flexible lease terms to meet your company needs



CONTAINER ROOF



CONTAINER FRONT



CONTAINER SIDE



CONTAINER REAR

## DIMENSIONS (METRIC/IMPERIAL)

### EXTERNAL DIMENSIONS

<b>Length</b>	6,058 mm	19' 10.5"
<b>Width</b>	2,438 mm	8' 0.0"
<b>Height</b>	2,591 mm	8' 6.0"

### INTERNAL DIMENSIONS

<b>Length</b>	5,895 mm	19' 4.2"
<b>Width</b> (Between side panels)	2,352 mm	7' 8.6"
<b>Height</b>	2,348 mm	7' 8.4"

### DOOR OPENING

<b>Width</b>	2,340 mm	7' 8.1"
<b>Height</b>	2,280 mm	7' 5.8"

### CAPACITY & WEIGHTS

<b>Inside Cubic Capacity</b>	32.5 m <sup>3</sup>	1,150 ft <sup>3</sup>
<b>Max Gross</b>	30,480 kg	67,200 lbs
<b>Payload</b>	28,320 kg	62,440 lbs
<b>Tare</b>	2,160 kg	4,760 lbs

**NOTE:** The dimensions and door openings of all containers correspond to ISO standards. However, due to production tolerances, a difference in measurement is possible.

**DISCLAIMER:** Every effort is made to ensure this information is accurate, however Triton does not assume any liability for the accuracy of the information and content provided in marketing or information materials, or for the consequences resulting from using the information and content provided. Triton does not guarantee or claim that said information and content is exhaustive. Claims as to the exhaustive nature of said information and content are excluded. The information and content is only provided for advertising purposes and is non-binding. No explicit or implied warranties or guarantees are made. The container displayed only represents a sample of the entire fleet.

The following items are registered or unregistered service marks in the United States and/or foreign jurisdictions pursuant to applicable intellectual property law and are the property of Triton International Limited and its subsidiaries: Triton® and TAL®.





## CLASSIFICATION

### Lease

Available via Triton's global network of supply locations.

# 40ft Open Top Container

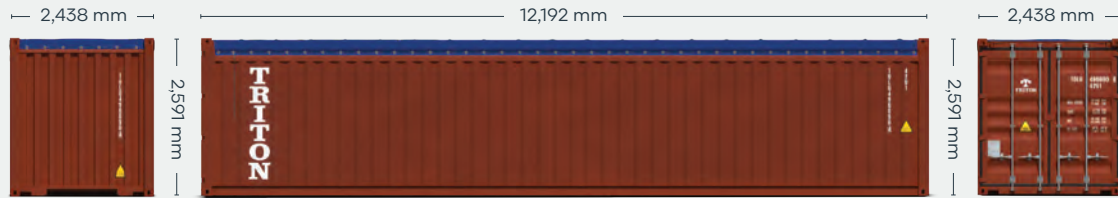


## FEATURES

- Corrugated steel panels with strong wooden floor to protect the cargo
- Designed for cargos that require special loading dimensions
- Removable door header
- Removable roof bows and durable tarpaulin with customs approved cable to cover the topside.
- Two swingable doors with custom approved closures
- 1 1/8" thick marine wooden floors with center dividers
- Several lashing rings and bars inside the container to secure the cargo
- Triton's industry leading new production testing and inspection criteria ensures the highest quality container
- Backed up by Triton's global network of supply locations and dedicated leasing and support teams
- Available in the high demand hub ports
- Flexible lease terms to meet your company needs



CONTAINER ROOF



CONTAINER FRONT

CONTAINER SIDE

CONTAINER REAR

## DIMENSIONS (METRIC/IMPERIAL)

### EXTERNAL DIMENSIONS

<b>Length</b>	12,192 mm	40' 0.0"
<b>Width</b>	2,438 mm	8' 0.0"
<b>Height</b>	2,591 mm	8' 6.0"

### INTERNAL DIMENSIONS

<b>Length</b>	12,032 mm	39' 5.7"
<b>Width</b>	2,352 mm	7' 8.6"
<b>Height</b>	2,348 mm	7' 8.4"

### DOOR OPENING

<b>Width</b>	2,340 mm	7' 8.1"
<b>Height</b>	2,280 mm	7' 5.8"

### CAPACITY & WEIGHTS

<b>Inside Cubic Capacity</b>	65.9 m <sup>3</sup>	2330 ft <sup>3</sup>
<b>Max Gross</b>	32,500 kg	71,650 lbs
<b>Payload</b>	28,760 kg	63,400 lbs
<b>Tare</b>	3,740 kg	8,250 lbs

**NOTE:** The dimensions and door openings of all containers correspond to ISO standards. However, due to production tolerances, a difference in measurement is possible.

**DISCLAIMER:** Every effort is made to ensure this information is accurate, however Triton does not assume any liability for the accuracy of the information and content provided in marketing or information materials, or for the consequences resulting from using the information and content provided. Triton does not guarantee or claim that said information and content is exhaustive. Claims as to the exhaustive nature of said information and content are excluded. The information and content is only provided for advertising purposes and is non-binding. No explicit or implied warranties or guarantees are made. The container displayed only represents a sample of the entire fleet.

The following items are registered or unregistered service marks in the United States and/or foreign jurisdictions pursuant to applicable intellectual property law and are the property of Triton International Limited and its subsidiaries: Triton® and TAL®.



# 40ft High Cube Open Top Container



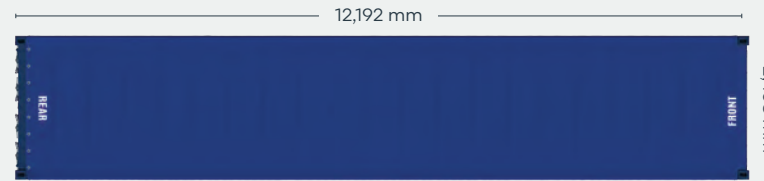
## CLASSIFICATION

### Lease

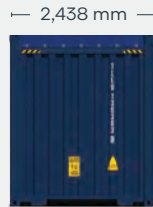
Available via Triton's global network of supply locations.

## FEATURES

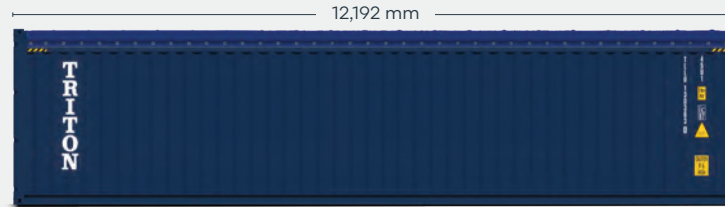
- Corrugated steel panels with strong wooden floor to protect the cargo
- Designed for cargos that require special loading dimensions
- Removable door header
- Removable roof bows and durable tarpaulin with customs approved cable to cover the topside.
- Two swingable doors with custom approved closures
- 1 1/8" thick marine wooden floors with center dividers
- Several lashing rings and bars inside the container to secure the cargo
- Triton's industry leading new production testing and inspection criteria ensures the highest quality container
- Backed up by Triton's global network of supply locations and dedicated leasing and support teams
- Available in the high demand hub ports
- Flexible lease terms to meet your company needs



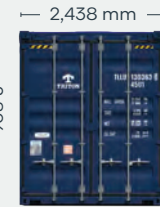
CONTAINER ROOF



CONTAINER FRONT



CONTAINER SIDE



CONTAINER REAR

## DIMENSIONS (METRIC/IMPERIAL)

### EXTERNAL DIMENSIONS

<b>Length</b>	12,192 mm	40' 0.0"
<b>Width</b>	2,438 mm	8' 0.0"
<b>Height</b>	2,896 mm	9' 6.0"

### INTERNAL DIMENSIONS

<b>Length</b>	12,032 mm	39' 5.7"
<b>Width</b>	2,352 mm	7' 8.6"
<b>Height</b>	2,653 mm	8' 8.4"

### DOOR OPENING

<b>Width</b>	2,340 mm	7' 8.1"
<b>Height</b>	2,585 mm	8' 5.8"

### CAPACITY & WEIGHTS

<b>Max Gross</b>	32,500 kg	71,650 lbs
<b>Payload</b>	28,590 kg	63,030 lbs
<b>Tare</b>	3,910 kg	8,620 lbs

**NOTE:** The dimensions and door openings of all containers correspond to ISO standards. However, due to production tolerances, a difference in measurement is possible.

**DISCLAIMER:** Every effort is made to ensure this information is accurate, however Triton does not assume any liability for the accuracy of the information and content provided in marketing or information materials, or for the consequences resulting from using the information and content provided. Triton does not guarantee or claim that said information and content is exhaustive. Claims as to the exhaustive nature of said information and content are excluded. The information and content is only provided for advertising purposes and is non-binding. No explicit or implied warranties or guarantees are made. The container displayed only represents a sample of the entire fleet.

The following items are registered or unregistered service marks in the United States and/or foreign jurisdictions pursuant to applicable intellectual property law and are the property of Triton International Limited and its subsidiaries: Triton® and TAL®.



# 20ft Used Open Top Container



## CLASSIFICATION

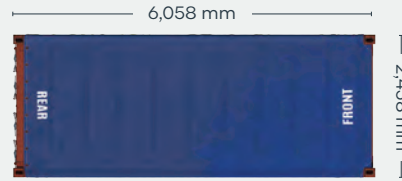
### For Sale: Used

Available via Triton's global network of supply locations.



## FEATURES

- Rugged corrugated steel exterior panels with a thick wooden floor
- Designed for cargos that require special loading dimensions
- Removable roof bows and heavy duty tarpaulin
- Swivel-out door header
- 14 gauge corrugated steel sides and 14 gauge locking steel double-end swing doors
- 1½" thick marine plywood floors, forklift tested to 16,000 lbs per 44 square inches
- Tie down steel lashing rings, 4000 lbs. cap. each
- (2) way laden fork lift pockets
- Security roof tarpaulin locking cable
- Backed up by Triton's global network of supply locations and dedicated sales and support teams
- Available globally



CONTAINER ROOF



CONTAINER FRONT

CONTAINER SIDE

CONTAINER REAR

## DIMENSIONS (METRIC/IMPERIAL)

### EXTERNAL DIMENSIONS

<b>Length</b>	6,058 mm	19' 10.5"
<b>Width</b>	2,438 mm	8' 0.0"
<b>Height</b>	2,591 mm	8' 6.0"

### INTERNAL DIMENSIONS

<b>Length</b>	5,895 mm	19' 4.2"
<b>Width</b> (Between side panels)	2,352 mm	7' 8.6"
<b>Height</b>	2,348 mm	7' 8.4"

### DOOR OPENING

<b>Width</b>	2,340 mm	7' 8.1"
<b>Height</b>	2,280 mm	7' 5.8"

### CAPACITY & WEIGHTS

<b>Inside Cubic Capacity</b>	32.5 m <sup>3</sup>	1,150 ft <sup>3</sup>
<b>Max Gross</b>	30,480 kg	67,200 lbs
<b>Payload</b>	27,780–28,320 kg	61,250–62,440 lbs
<b>Tare</b>	2,160–2,700 kg	4,760–5,950 lbs

**NOTE:** The dimensions and door openings of all containers correspond to ISO standards. However, due to production tolerances, a difference in measurement is possible.

**DISCLAIMER:** Every effort is made to ensure this information is accurate, however Triton does not assume any liability for the accuracy of the information and content provided in marketing or information materials, or for the consequences resulting from using the information and content provided. Triton does not guarantee or claim that said information and content is exhaustive. Claims as to the exhaustive nature of said information and content are excluded. The information and content is only provided for advertising purposes and is non-binding. No explicit or implied warranties or guarantees are made. The container displayed only represents a sample of the entire fleet.

The following items are registered or unregistered service marks in the United States and/or foreign jurisdictions pursuant to applicable intellectual property law and are the property of Triton International Limited and its subsidiaries: Triton® and TAL®.



# 20ft Flush Folding Flatracks



## CLASSIFICATION

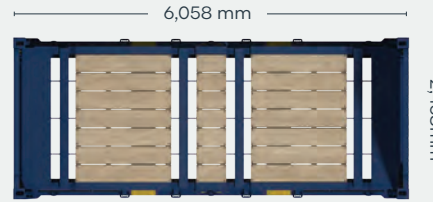
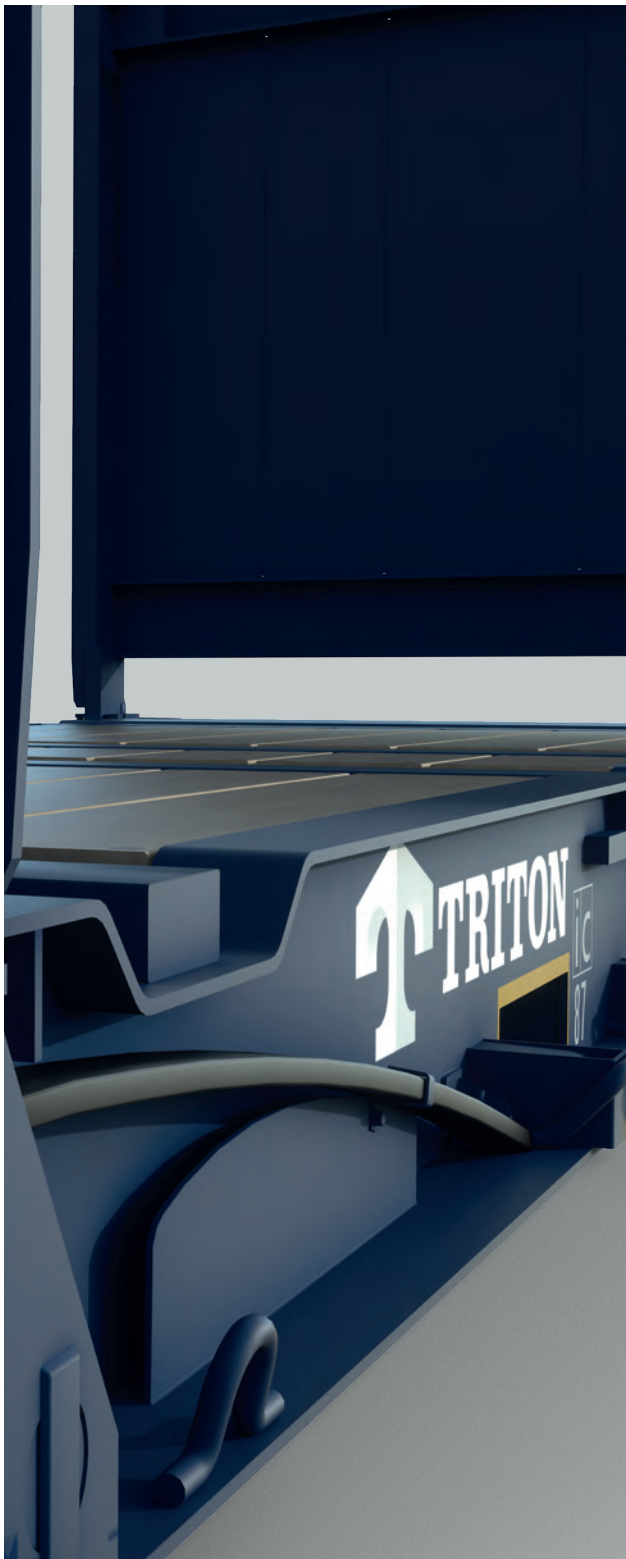
### Lease

Available via Triton's global network of supply locations.



## FEATURES

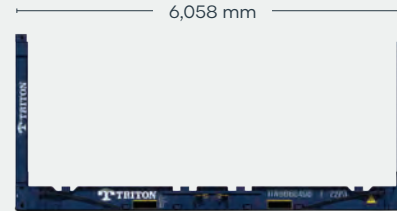
- Built to carry heavy or oversized cargoes
- Great for specialized shipments of steel, pipes, drums and machinery
- Forklift pockets for easy empty handling
- Heavy duty steel frames and thick plank floors and lashing rings all around
- With flush folding end frames to allow for efficient stacking and repositioning
- Triton's industry leading new production testing and inspection criteria ensures the highest quality container
- Available in the high demand hub ports
- Backed up by Triton's global network of supply locations and dedicated leasing and support teams
- Flexible lease terms to meet your company needs



FLATRACK TOP



FLATRACK FRONT



FLATRACK SIDE



FLATRACK REAR

## DIMENSIONS (METRIC/IMPERIAL)

### EXTERNAL DIMENSIONS

<b>Length</b> (Base bottom casting)	6,058 mm	19' 10.5"
<b>Width</b> (Base bottom casting)	2,438 mm	8' 0.0"
<b>Height</b> (End frame up)	2,591 mm	8' 6.0"
<b>Height</b> (End frame down)	370 mm	1' 2.6"

### INTERNAL DIMENSIONS

<b>Length</b> (Between end panels)	6,038 mm	19' 9.7"
<b>Width</b> (Over bottom side rail)	2,194 mm	7' 2.4"
<b>Height</b> (Side rail to top castings)	2,233 mm	7' 3.9"

### CAPACITY & WEIGHTS

<b>Max Gross</b>	45,000 kg	99,200 lbs
<b>Payload</b>	42,000 kg	92,590 lbs
<b>Tare</b>	3,000 kg	6,640 lbs

**NOTE:** The dimensions of containers correspond to ISO standards.

However, due to production tolerances, a difference in measurement is possible.

**DISCLAIMER:** Every effort is made to ensure this information is accurate, however Triton does not assume any liability for the accuracy of the information and content provided in marketing or information materials, or for the consequences resulting from using the information and content provided. Triton does not guarantee or claim that said information and content is exhaustive. Claims as to the exhaustive nature of said information and content are excluded. The information and content is only provided for advertising purposes and is non-binding. No explicit or implied warranties or guarantees are made. The container displayed only represents a sample of the entire fleet.

The following items are registered or unregistered service marks in the United States and/or foreign jurisdictions pursuant to applicable intellectual property law and are the property of Triton International Limited and its subsidiaries: Triton® and TAL®.





## CLASSIFICATION

### Lease

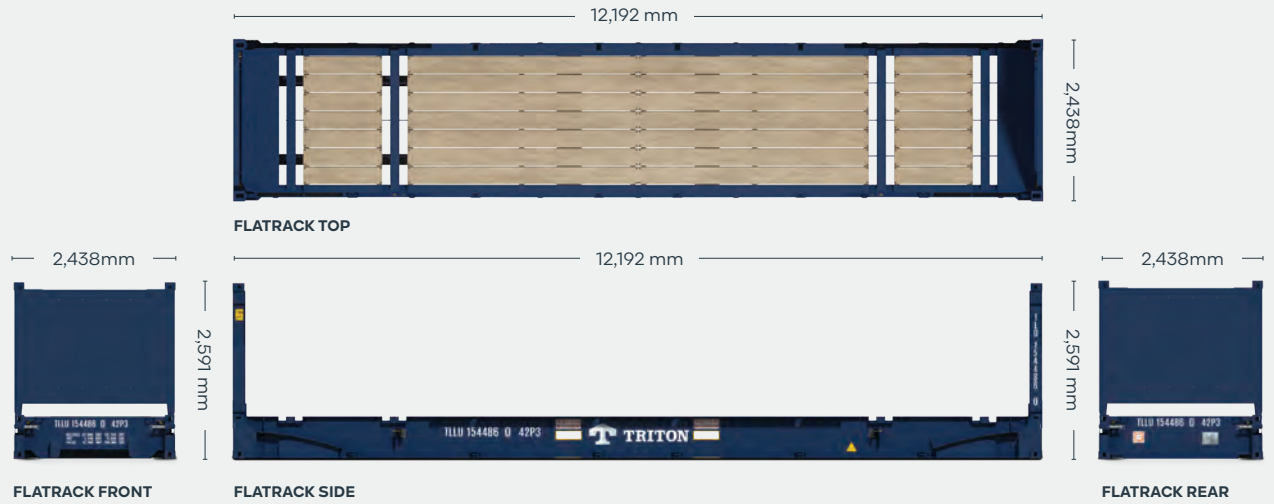
Available via Triton's global network of supply locations.

# 40ft Flush Folding Flatracks



## FEATURES

- Built to carry heavy or oversized cargoes
- Great for specialized shipments of steel, pipes, drums and machinery
- Forklift pockets for easy empty handling
- Heavy duty steel frames and thick plank floors and lashing rings all around
- With flush folding end frames to allow for efficient stacking and repositioning
- Triton's industry leading new production testing and inspection criteria ensures the highest quality container
- Available in the high demand hub ports
- Backed up by Triton's global network of supply locations and dedicated leasing and support teams
- Flexible lease terms to meet your company needs



## DIMENSIONS (METRIC/IMPERIAL)

### EXTERNAL DIMENSIONS

<b>Length</b> (Base bottom casting)	12,192 mm	40' 0.0"
<b>Width</b> (Base bottom casting)	2,438 mm	8' 0.0"
<b>Height</b> (End frame up)	2,591 mm	8' 6.0"
<b>Height</b> (End frame down)	648 mm	2' 1.5"

### INTERNAL DIMENSIONS

<b>Length</b> (Between end panels)	12,182 mm	39' 11.6"
<b>Width</b> (Over bottom side rail)	2,374 mm	7' 9.5"
<b>Height</b> (Side rail to top castings)	1,959 mm	6' 5.1"

### CAPACITY & WEIGHTS

<b>Max Gross</b>	52,500 kg	115,740 lbs
<b>Payload</b>	47,260 kg	104,190 lbs
<b>Tare</b>	5,240 kg	11,550 lbs

**NOTE:** The dimensions of containers correspond to ISO standards.

However, due to production tolerances, a difference in measurement is possible.

**DISCLAIMER:** Every effort is made to ensure this information is accurate, however Triton does not assume any liability for the accuracy of the information and content provided in marketing or information materials, or for the consequences resulting from using the information and content provided. Triton does not guarantee or claim that said information and content is exhaustive. Claims as to the exhaustive nature of said information and content are excluded. The information and content is only provided for advertising purposes and is non-binding. No explicit or implied warranties or guarantees are made. The container displayed only represents a sample of the entire fleet.

The following items are registered or unregistered service marks in the United States and/or foreign jurisdictions pursuant to applicable intellectual property law and are the property of Triton International Limited and its subsidiaries: Triton® and TAL®.



## CLASSIFICATION

### Lease

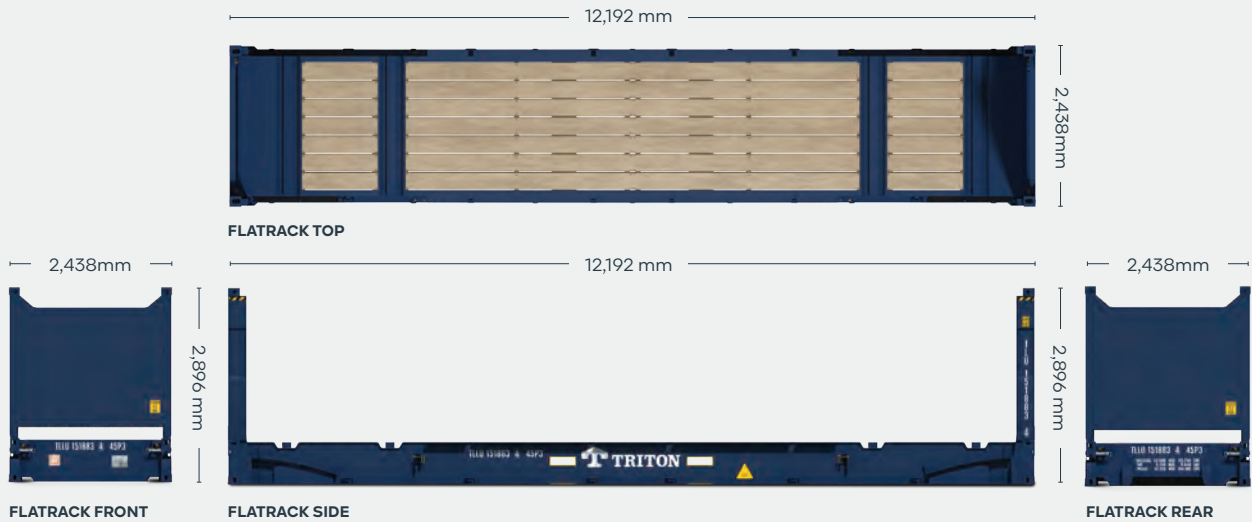
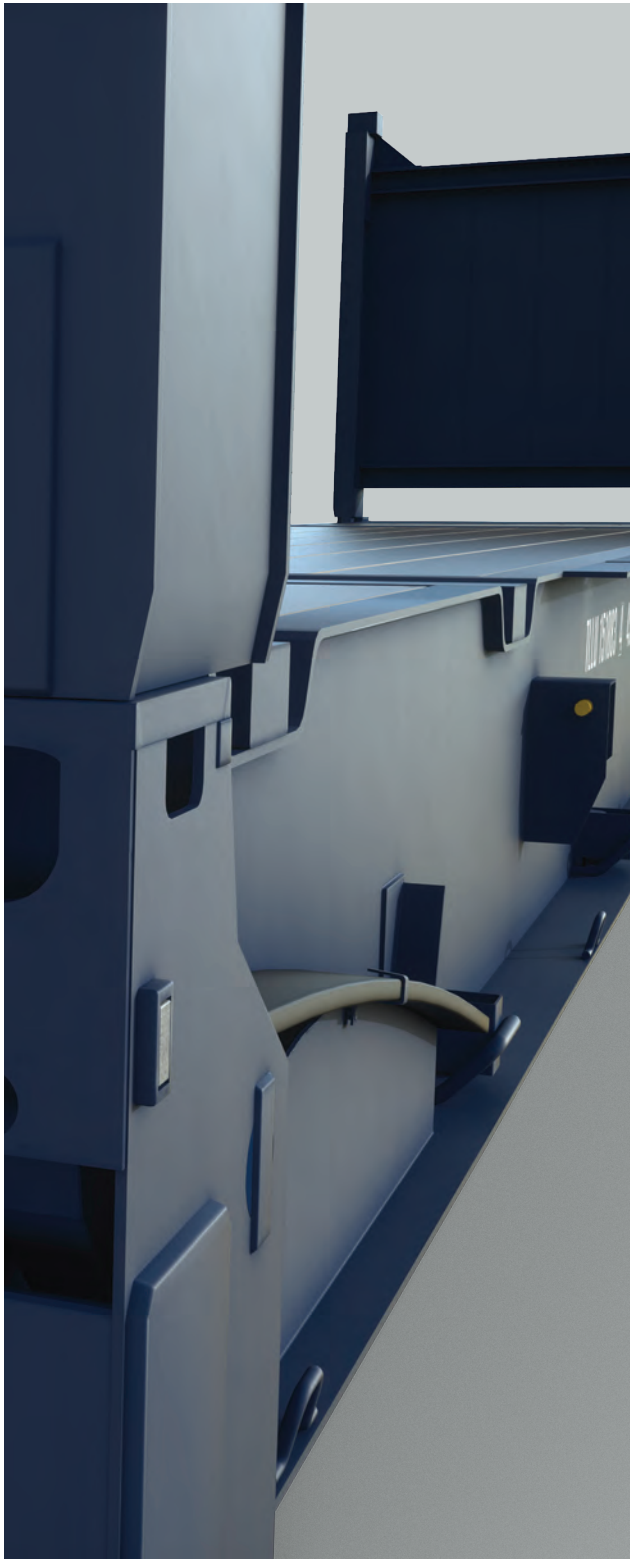
Available via Triton's global network of supply locations.

# 40ft High Cube Flush Folding Flatracks



## FEATURES

- Additional height provides extra capacity for your goods
- Built to carry heavy or out of gauge cargoes
- Heavy duty steel frames and thick plank floors
- Great for specialized shipments of steel, pipes, drums and machinery
- With flush folding end frames to allow for efficient stacking
- Triton's industry leading new production testing and inspection criteria ensures the highest quality container
- Backed up by Triton's global network of supply locations and dedicated leasing and support teams
- Flexible lease terms to meet your company needs



## DIMENSIONS (METRIC/IMPERIAL)

### EXTERNAL DIMENSIONS

<b>Length</b> (Base bottom casting)	12,192 mm	40' 0.0"
<b>Width</b> (Base bottom casting)	2,438 mm	8' 0.0"
<b>Height</b> (End frame up)	2,896 mm	9' 6.0"
<b>Height</b> (End frame down)	648 mm	2' 1.5"

### INTERNAL DIMENSIONS

<b>Length</b> (Between end panels)	12,182 mm	39' 11.6"
<b>Width</b> (Over bottom side rail)	2,374 mm	7' 9.5"
<b>Height</b> (Side rail to top castings)	2,264 mm	7' 5.1"

### CAPACITY & WEIGHTS

<b>Max Gross</b>	52,500 kg	115,740 lbs
<b>Payload</b>	47,220 kg	104,100 lbs
<b>Tare</b>	5,280 kg	11,640 lbs

**NOTE:** The dimensions of containers correspond to ISO standards.

However, due to production tolerances, a difference in measurement is possible.

**DISCLAIMER:** Every effort is made to ensure this information is accurate, however Triton does not assume any liability for the accuracy of the information and content provided in marketing or information materials, or for the consequences resulting from using the information and content provided. Triton does not guarantee or claim that said information and content is exhaustive. Claims as to the exhaustive nature of said information and content are excluded. The information and content is only provided for advertising purposes and is non-binding. No explicit or implied warranties or guarantees are made. The container displayed only represents a sample of the entire fleet.

The following items are registered or unregistered service marks in the United States and/or foreign jurisdictions pursuant to applicable intellectual property law and are the property of Triton International Limited and its subsidiaries: Triton® and TAL®.



# ISO Fluid Tank Container



## CLASSIFICATION

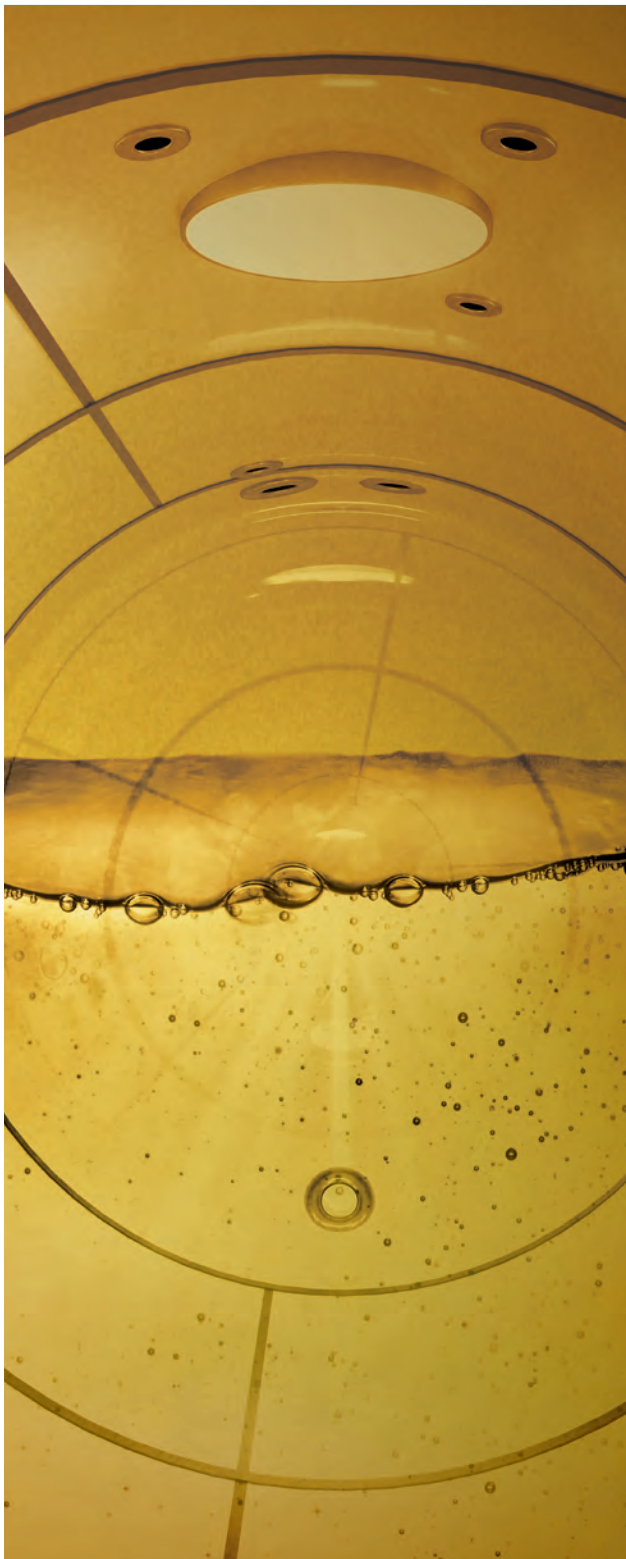
### Lease

Available via Triton's global network of supply locations.



## FEATURES

- UN portable tank: Type T11 and T14 available
- Capacities ranging from 21000l to 35000l
- Approved for ADR/RID/IMDG transportation
- Suitable for the carriage of most bulk liquids
- General specs include a high quality stainless steel tank barrel
- Full frame type design with B-style walkway
- Internationally recognized fittings
- Insulation with steam heating capability
- Rigorous quality control of our 3rd party production facilities
- Backed up by Triton's global network of supply locations and dedicated leasing and support teams
- Available globally
- Flexible lease terms to meet your company needs



TANK TOP



TANK FRONT

TANK SIDE

TANK REAR

## DIMENSIONS (METRIC/IMPERIAL)

### FRAME DIMENSIONS (20' Equivalent)

<b>Length</b>	6,058 mm	19' 10.5"
<b>Width</b>	2,438 mm	8' 0.0"
<b>Height</b>	2,591 mm	8' 6.0"

### WEIGHT, PRESSURE & TEMPERATURE

<b>Maximum Gross Weight</b>	36,000 kg
<b>Tare Weight</b>	3,710 kg
<b>Payload</b>	32,290 kg
<b>Maximum Allowable Working Pressure</b>	4.00 bar
<b>Design Temperature</b> (frame & tank)	-40°C to +130°C

## OPTIONS

### AVAILABLE ISO TANKS T11 TYPES

20ft	21,000 litre
20ft	25,000 litre
20ft	26,000 litre

### AVAILABLE NON-ISO T11 TYPES

7.82m Swap Body	35,000 litre
-----------------	--------------

**NOTE:** The dimensions and door openings of all containers correspond to ISO standards. However, due to production tolerances, a difference in measurement is possible.

**DISCLAIMER:** Every effort is made to ensure this information is accurate, however Triton does not assume any liability for the accuracy of the information and content provided in marketing or information materials, or for the consequences resulting from using the information and content provided. Triton does not guarantee or claim that said information and content is exhaustive. Claims as to the exhaustive nature of said information and content are excluded. The information and content is only provided for advertising purposes and is non-binding. No explicit or implied warranties or guarantees are made. The container displayed only represents a sample of the entire fleet.

The following items are registered or unregistered service marks in the United States and/or foreign jurisdictions pursuant to applicable intellectual property law and are the property of Triton International Limited and its subsidiaries: Triton® and TAL®.

HERE. THERE. EVERYWHERE

# We supply the world

Triton is the largest lessor of intermodal containers in the world with over 7 million TEU of containers. Our services are available in 89 countries around the globe. So, no matter where you need containers, we'll have them nearby. To find your nearest Triton Container Sales manager visit [www.tritoncontainer.com](http://www.tritoncontainer.com).



**Global inventory of  
cargoworthy containers  
for lease and sale.**



**Unrivalled container  
supply at competitive  
prices.**



**Outstanding and  
highly responsive  
customer services.**



**Global network of 20 offices  
and 3 independent agencies  
across 16 countries.**



**Equipment  
built to the  
highest quality.**



**Our size, strength and reliability  
make us the go-to supplier of  
intermodal shipping containers.**



**TRITON**

We're the biggest for a reason, contact our friendly experts and experience Triton's world-leading service and cost savings today. Imagine what we can do together.

[www.tritoncontainer.com](http://www.tritoncontainer.com)