



TRITON

OUR SECTORS

Construction

We have provided large international firms with specialist container equipment for decades.



OUR SECTORS – CONSTRUCTION

Best-in-class solutions for the construction industry

We understand the complex challenges global construction and engineering firms face to supply their projects with the necessary equipment.

Triton has provided large international firms with equipment for decades. Our experience and capability enable us to provide cargoworthy shipping containers globally. We sell a wide range of equipment, including Flatracks, Open Top Containers, Standard Dry Containers, High Cube Containers, Double Door Containers, and Pallet Wide Containers.

Infrastructure projects

Our global equipment sales and leasing operations include the acquisition, leasing, re-leasing, and ultimate sale of multiple types of intermodal transportation equipment. We support companies working on large-scale infrastructure projects such as highways, roads, streets, bridges, waste management, power, telecommunications, waste, and removal.

Offshore projects

We frequently supply equipment for offshore projects. Our Dry Shipping Containers are constructed using corten steel. They are resistant to corrosion and designed to withstand the extreme weather conditions commonly experienced on oil rigs and offshore wind farms.

PLEASE NOTE: The following pages showcase a small sample of products in the Triton global inventory. We stock a wide range of products for lease and sale in various conditions. Get in touch with your local Triton representative for more information.



CLASSIFICATION

For Sale: New

Available via Triton's global network of supply locations.

8ft Dry Container



FEATURES

- Manufactured with rust resistant corten steel
- Secure and weatherproof, with vents to allow airflow
- Incredibly versatile
- Ideal for smaller domestic applications such as the construction industry
- Superior paint systems
- Advance orders in your preferred color (minimum volume required)
- Great options including 80 micron floor coating, lock boxes, waist high door locking handles
- Triton's industry leading new production testing and inspection criteria ensures the highest quality container
- Minimize shipping costs by loading an 8' unit inside of a 10' unit
- Moved from factory to most major ports in the world
- Backed up by Triton's global network of supply locations and dedicated sales and support teams
- Available globally



— 2,438 mm —



— 2,200 mm —

CONTAINER ROOF

— 2,200 mm —



CONTAINER FRONT

— 2,438 mm —



CONTAINER SIDE

— 2,200 mm —



CONTAINER REAR

DIMENSIONS (METRIC/IMPERIAL)

EXTERNAL DIMENSIONS

Length	2,200 mm	7' 2.6"
Width	2,438 mm	8' 0.0"
Height	2,260 mm	7' 5.0"

INTERNAL DIMENSIONS

Length	2,112 mm	6' 11.1"
Width	2,287 mm	7' 6.0"
Height	2,062 mm	6' 9.2"

DOOR OPENING

Width	2,106 mm	6' 10.9"
Height	1,949 mm	6' 4.7"

CAPACITY & WEIGHTS

Inside Cubic Capacity	9.96 m ³	351.7 ft ³
Max Gross	6,000 kg	13,230 lbs
Payload	5,150 kg	11,350 lbs
Tare	850 kg	1,880 lbs

NOTE: The dimensions and door openings of all containers correspond to ISO standards. However, due to production tolerances, a difference in measurement is possible.

DISCLAIMER: Every effort is made to ensure this information is accurate, however Triton does not assume any liability for the accuracy of the information and content provided in marketing or information materials, or for the consequences resulting from using the information and content provided. Triton does not guarantee or claim that said information and content is exhaustive. Claims as to the exhaustive nature of said information and content are excluded. The information and content is only provided for advertising purposes and is non-binding. No explicit or implied warranties or guarantees are made. The container displayed only represents a sample of the entire fleet.

The following items are registered or unregistered service marks in the United States and/or foreign jurisdictions pursuant to applicable intellectual property law and are the property of Triton International Limited and its subsidiaries: Triton® and TAL®.



CLASSIFICATION

For Sale: New

Available via Triton's global network of supply locations.

10ft Dry Container



FEATURES

- Manufactured with rust resistant corten steel
- Secure and weatherproof, with vents to allow airflow
- Superior paint systems
- Incredibly versatile and suitable for customers to modify into a wide range of applications
- Advance orders in your preferred color (minimum volume required)
- Ideal for smaller domestic applications such as the construction industry
- Great options including 80 micron floor coating, lock boxes, waist high door locking handles
- Triton's industry leading new production testing and inspection criteria ensures the highest quality container
- Shipping costs can be minimized by loading 2x10' units joined together (using approved ISO certification method)
- Moved from factory to most major ports in the world
- Backed up by Triton's global network of supply locations and dedicated sales and support teams
- Available globally



CONTAINER ROOF



CONTAINER FRONT

CONTAINER SIDE

CONTAINER REAR

DIMENSIONS (METRIC/IMPERIAL)

EXTERNAL DIMENSIONS

Length	2,991 mm	9' 9.8"
Width	2,438 mm	8' 0.0"
Height	2,591 mm	8' 6.0"

INTERNAL DIMENSIONS

Length	2,831 mm	9' 3.5"
Width	2,352 mm	7' 8.6"
Height	2,393 mm	7' 10.2"

DOOR OPENING

Width	2,338 mm	7' 8.0"
Height	2,280 mm	7' 5.8"

CAPACITY & WEIGHTS

Inside Cubic Capacity	15.9 m ³	563 ft ³
Max Gross	10,160 kg	22,400 lbs
Payload	8,960 kg	19,755 lbs
Tare	1,200 kg	2,645 lbs

NOTE: The dimensions and door openings of all containers correspond to ISO standards. However, due to production tolerances, a difference in measurement is possible.

DISCLAIMER: Every effort is made to ensure this information is accurate, however Triton does not assume any liability for the accuracy of the information and content provided in marketing or information materials, or for the consequences resulting from using the information and content provided. Triton does not guarantee or claim that said information and content is exhaustive. Claims as to the exhaustive nature of said information and content are excluded. The information and content is only provided for advertising purposes and is non-binding. No explicit or implied warranties or guarantees are made. The container displayed only represents a sample of the entire fleet.

The following items are registered or unregistered service marks in the United States and/or foreign jurisdictions pursuant to applicable intellectual property law and are the property of Triton International Limited and its subsidiaries: Triton® and TAL®.



20ft Dry Container



CLASSIFICATION

Lease

Available via Triton's global network of supply locations.

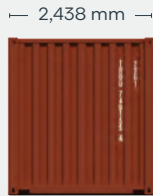


FEATURES

- Manufactured with rust resistant corten steel
- Secure and weatherproof, with vents to allow airflow
- Resistant to damage and corrosion
- Superior paint systems
- Triton's industry leading new production testing and inspection criteria ensures the highest quality container
- Incredibly versatile
- Backed up by Triton's global network of supply locations and dedicated leasing and support teams
- Available globally
- IICL-6 repair criteria saves cost at off-hire
- Damage Protection Plan available to reduce costs and time at off-hire
- Flexible lease terms to meet your company needs



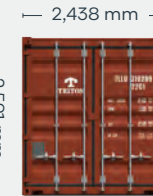
CONTAINER ROOF



CONTAINER FRONT



CONTAINER SIDE



CONTAINER REAR

DIMENSIONS (METRIC/IMPERIAL)

EXTERNAL DIMENSIONS

Length	6,058 mm	19' 10.5"
Width	2,438 mm	8' 0.0"
Height	2,591 mm	8' 6.0"

INTERNAL DIMENSIONS

Length	5,898 mm	19' 4.2"
Width	2,352 mm	7' 8.6"
Height	2,393 mm	7' 10.2"

DOOR OPENING

Width	2,340 mm	7' 8.1"
Height	2,280 mm	7' 5.8"

CAPACITY & WEIGHTS

Inside Cubic Capacity	33.2 m ³	1172 ft ³
Max Gross	30,480 kg	67,200 lbs
Payload	28,380 kg	62,570 lbs
Tare	2,100 kg	4,630 lbs

NOTE: The dimensions and door openings of all containers correspond to ISO standards. However, due to production tolerances, a difference in measurement is possible.

DISCLAIMER: Every effort is made to ensure this information is accurate, however Triton does not assume any liability for the accuracy of the information and content provided in marketing or information materials, or for the consequences resulting from using the information and content provided. Triton does not guarantee or claim that said information and content is exhaustive. Claims as to the exhaustive nature of said information and content are excluded. The information and content is only provided for advertising purposes and is non-binding. No explicit or implied warranties or guarantees are made. The container displayed only represents a sample of the entire fleet.

The following items are registered or unregistered service marks in the United States and/or foreign jurisdictions pursuant to applicable intellectual property law and are the property of Triton International Limited and its subsidiaries: Triton® and TAL®.



CLASSIFICATION

Lease

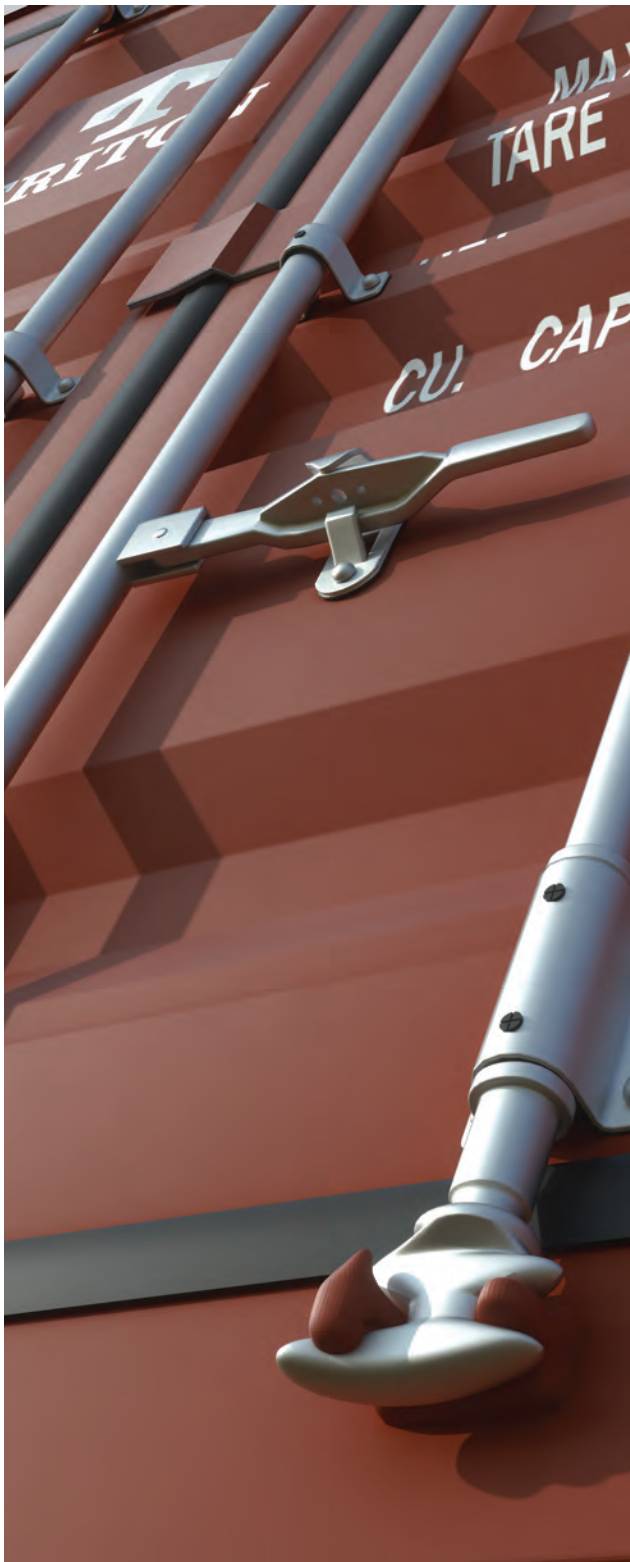
Available via Triton's global network of supply locations.

40ft Dry Container

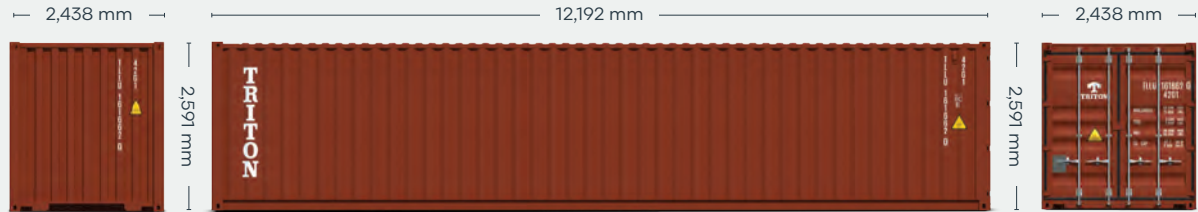


FEATURES

- Manufactured with rust resistant corten steel
- Secure and weatherproof, with vents to allow airflow
- Resistant to damage and corrosion
- Superior paint systems
- Triton's industry leading new production testing and inspection criteria ensures the highest quality container
- Incredibly versatile
- Backed up by Triton's global network of supply locations and dedicated leasing and support teams
- Available globally
- IICL-6 repair criteria saves cost at off-hire
- Damage Protection Plan available to reduce costs and time at off-hire
- Flexible lease terms to meet your company needs



CONTAINER ROOF



CONTAINER FRONT

CONTAINER SIDE

CONTAINER REAR

DIMENSIONS (METRIC/IMPERIAL)

EXTERNAL DIMENSIONS

Length	12,192 mm	40' 0.0"
Width	2,438 mm	8' 0.0"
Height	2,591 mm	8' 6.0"

INTERNAL DIMENSIONS

Length	12,032 mm	39' 5.7"
Width	2,352 mm	7' 8.6"
Height	2,393 mm	7' 10.2"

DOOR OPENING

Width	2,340 mm	7' 8.1"
Height	2,280 mm	7' 5.8"

CAPACITY & WEIGHTS

Inside Cubic Capacity	67.7 m ³	2,390 ft ³
Max Gross	32,500 kg	71,650 lbs
Payload	28,960 kg	63,850 lbs
Tare	3,540 kg	7,800 lbs

NOTE: The dimensions and door openings of all containers correspond to ISO standards. However, due to production tolerances, a difference in measurement is possible.

DISCLAIMER: Every effort is made to ensure this information is accurate, however Triton does not assume any liability for the accuracy of the information and content provided in marketing or information materials, or for the consequences resulting from using the information and content provided. Triton does not guarantee or claim that said information and content is exhaustive. Claims as to the exhaustive nature of said information and content are excluded. The information and content is only provided for advertising purposes and is non-binding. No explicit or implied warranties or guarantees are made. The container displayed only represents a sample of the entire fleet.

The following items are registered or unregistered service marks in the United States and/or foreign jurisdictions pursuant to applicable intellectual property law and are the property of Triton International Limited and its subsidiaries: Triton® and TAL®.



20ft High Cube Dry Container



CLASSIFICATION

For Sale: New

Available via Triton's global network of supply locations.



FEATURES

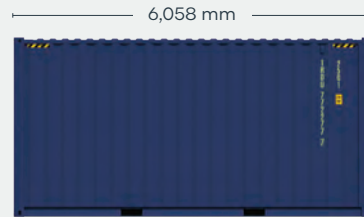
- Additional height provides extra internal cubic capacity, which means greater interior stacking capacity for your goods
- Incredibly versatile and suitable for customers to modify into a wide range of applications
- Manufactured with rust resistant corten steel
- Secure and weatherproof, with vents to allow airflow
- Resistant to damage and corrosion
- Advance orders in your preferred color (minimum volume required)
- Superior paint systems
- Great options including 80 micron floor coating, lock boxes, waist high door locking handles
- Triton's industry leading new production testing and inspection criteria ensures the highest quality container
- Moved from factory to most major ports in the world
- Backed up by Triton's global network of supply locations and dedicated sales and support teams
- Available globally



CONTAINER ROOF



CONTAINER FRONT



CONTAINER SIDE



CONTAINER REAR

DIMENSIONS (METRIC/IMPERIAL)

EXTERNAL DIMENSIONS

Length	6,058 mm	19' 10.5"
Width	2,438 mm	8' 0.0"
Height	2,896 mm	9' 6.0"

INTERNAL DIMENSIONS

Length	5,898 mm	19' 4.2"
Width	2,352 mm	7' 8.6"
Height	2,689 mm	8' 10.2"

DOOR OPENING

Width	2,343 mm	7' 8.2"
Height	2,585 mm	8' 5.8"

CAPACITY & WEIGHTS

Inside Cubic Capacity	32.9 m ³	1,162 ft ³
Max Gross	30,480 kg	67,200 lbs
Payload	28,340 kg	62,480 lbs
Tare	2,140 kg	4,720 lbs

NOTE: The dimensions and door openings of all containers correspond to ISO standards. However, due to production tolerances, a difference in measurement is possible.

DISCLAIMER: Every effort is made to ensure this information is accurate, however Triton does not assume any liability for the accuracy of the information and content provided in marketing or information materials, or for the consequences resulting from using the information and content provided. Triton does not guarantee or claim that said information and content is exhaustive. Claims as to the exhaustive nature of said information and content are excluded. The information and content is only provided for advertising purposes and is non-binding. No explicit or implied warranties or guarantees are made. The container displayed only represents a sample of the entire fleet.

The following items are registered or unregistered service marks in the United States and/or foreign jurisdictions pursuant to applicable intellectual property law and are the property of Triton International Limited and its subsidiaries: Triton® and TAL®.



CLASSIFICATION

For Sale: New

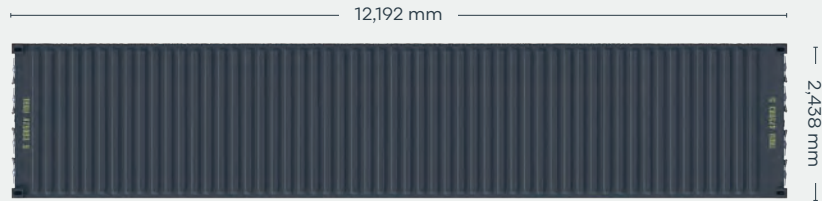
Available via Triton's global network of supply locations.

40ft Double Door Dry Container

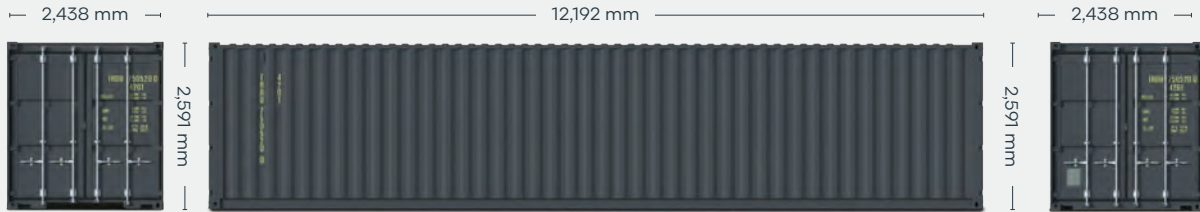


FEATURES

- Cargo doors on both ends provide easy access for stocking and retrieving stored goods
- Manufactured with rust resistant corten steel
- Secure and weatherproof, with vents to allow airflow
- Superior paint systems
- Resistant to damage and corrosion
- Advance orders in your preferred color (minimum volume required)
- Great options including 80 micron floor coating, lock boxes, waist high door locking handles
- Triton's industry leading new production testing and inspection criteria ensures the highest quality container
- Incredibly versatile and suitable for customers to modify into a wide range of applications
- Moved from factory to most major ports in the world
- Backed up by Triton's global network of supply locations and dedicated sales and support teams
- Available globally



CONTAINER ROOF



CONTAINER FRONT

CONTAINER SIDE

CONTAINER REAR

DIMENSIONS (METRIC/IMPERIAL)

EXTERNAL DIMENSIONS

Length	12,192 mm	40' 0.0"
Width	2,438 mm	8' 0.0"
Height	2,591 mm	8' 6.0"

INTERNAL DIMENSIONS

Length	11,978 mm	39' 3.6"
Width	2,352 mm	7' 8.6"
Height	2,393 mm	7' 10.2"

DOOR OPENING

Width	2,343 mm	7' 8.2"
Height	2,280 mm	7' 5.8"

CAPACITY & WEIGHTS

Inside Cubic Capacity	67.4 m ³	2380 ft ³
Max Gross	30,480 kg	67,200 lbs
Payload	26,900 kg	59,310 lbs
Tare	3,580 kg	7,890 lbs

NOTE: The dimensions and door openings of all containers correspond to ISO standards. However, due to production tolerances, a difference in measurement is possible.

DISCLAIMER: Every effort is made to ensure this information is accurate, however Triton does not assume any liability for the accuracy of the information and content provided in marketing or information materials, or for the consequences resulting from using the information and content provided. Triton does not guarantee or claim that said information and content is exhaustive. Claims as to the exhaustive nature of said information and content are excluded. The information and content is only provided for advertising purposes and is non-binding. No explicit or implied warranties or guarantees are made. The container displayed only represents a sample of the entire fleet.

The following items are registered or unregistered service marks in the United States and/or foreign jurisdictions pursuant to applicable intellectual property law and are the property of Triton International Limited and its subsidiaries: Triton® and TAL®.



CLASSIFICATION

Lease

Available via Triton's global network of supply locations.

40ft Open Top Container

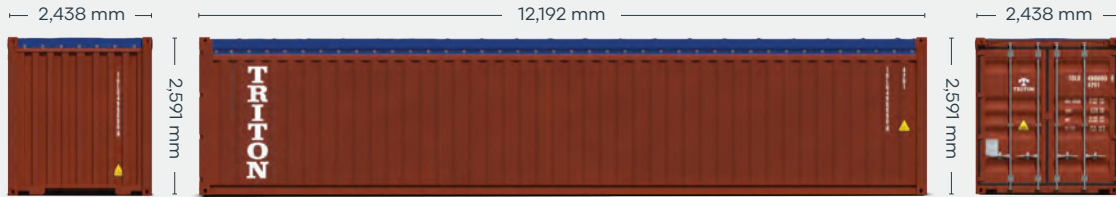


FEATURES

- Corrugated steel panels with strong wooden floor to protect the cargo
- Designed for cargos that require special loading dimensions
- Removable door header
- Removable roof bows and durable tarpaulin with customs approved cable to cover the topside.
- Two swingable doors with custom approved closures
- 1 1/8" thick marine wooden floors with center dividers
- Several lashing rings and bars inside the container to secure the cargo
- Triton's industry leading new production testing and inspection criteria ensures the highest quality container
- Backed up by Triton's global network of supply locations and dedicated leasing and support teams
- Available in the high demand hub ports
- Flexible lease terms to meet your company needs



CONTAINER ROOF



CONTAINER FRONT

CONTAINER SIDE

CONTAINER REAR

DIMENSIONS (METRIC/IMPERIAL)

EXTERNAL DIMENSIONS

Length	12,192 mm	40' 0.0"
Width	2,438 mm	8' 0.0"
Height	2,591 mm	8' 6.0"

INTERNAL DIMENSIONS

Length	12,032 mm	39' 5.7"
Width	2,352 mm	7' 8.6"
Height	2,348 mm	7' 8.4"

DOOR OPENING

Width	2,340 mm	7' 8.1"
Height	2,280 mm	7' 5.8"

CAPACITY & WEIGHTS

Inside Cubic Capacity	65.9 m ³	2330 ft ³
Max Gross	32,500 kg	71,650 lbs
Payload	28,760 kg	63,400 lbs
Tare	3,740 kg	8,250 lbs

NOTE: The dimensions and door openings of all containers correspond to ISO standards. However, due to production tolerances, a difference in measurement is possible.

DISCLAIMER: Every effort is made to ensure this information is accurate, however Triton does not assume any liability for the accuracy of the information and content provided in marketing or information materials, or for the consequences resulting from using the information and content provided. Triton does not guarantee or claim that said information and content is exhaustive. Claims as to the exhaustive nature of said information and content are excluded. The information and content is only provided for advertising purposes and is non-binding. No explicit or implied warranties or guarantees are made. The container displayed only represents a sample of the entire fleet.

The following items are registered or unregistered service marks in the United States and/or foreign jurisdictions pursuant to applicable intellectual property law and are the property of Triton International Limited and its subsidiaries: Triton® and TAL®.



20ft Flush Folding Flatracks



CLASSIFICATION

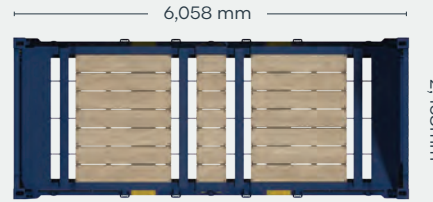
Lease

Available via Triton's global network of supply locations.



FEATURES

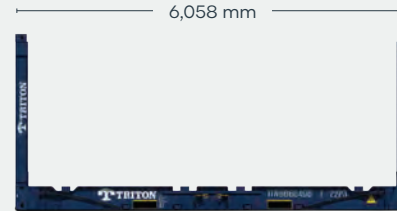
- Built to carry heavy or oversized cargoes
- Great for specialized shipments of steel, pipes, drums and machinery
- Forklift pockets for easy empty handling
- Heavy duty steel frames and thick plank floors and lashing rings all around
- With flush folding end frames to allow for efficient stacking and repositioning
- Triton's industry leading new production testing and inspection criteria ensures the highest quality container
- Available in the high demand hub ports
- Backed up by Triton's global network of supply locations and dedicated leasing and support teams
- Flexible lease terms to meet your company needs



FLATRACK TOP



FLATRACK FRONT



FLATRACK SIDE



FLATRACK REAR

DIMENSIONS (METRIC/IMPERIAL)

EXTERNAL DIMENSIONS

Length (Base bottom casting)	6,058 mm	19' 10.5"
Width (Base bottom casting)	2,438 mm	8' 0.0"
Height (End frame up)	2,591 mm	8' 6.0"
Height (End frame down)	370 mm	1' 2.6"

INTERNAL DIMENSIONS

Length (Between end panels)	6,038 mm	19' 9.7"
Width (Over bottom side rail)	2,194 mm	7' 2.4"
Height (Side rail to top castings)	2,233 mm	7' 3.9"

CAPACITY & WEIGHTS

Max Gross	45,000 kg	99,200 lbs
Payload	42,000 kg	92,590 lbs
Tare	3,000 kg	6,640 lbs

NOTE: The dimensions of containers correspond to ISO standards.

However, due to production tolerances, a difference in measurement is possible.

DISCLAIMER: Every effort is made to ensure this information is accurate, however Triton does not assume any liability for the accuracy of the information and content provided in marketing or information materials, or for the consequences resulting from using the information and content provided. Triton does not guarantee or claim that said information and content is exhaustive. Claims as to the exhaustive nature of said information and content are excluded. The information and content is only provided for advertising purposes and is non-binding. No explicit or implied warranties or guarantees are made. The container displayed only represents a sample of the entire fleet.

The following items are registered or unregistered service marks in the United States and/or foreign jurisdictions pursuant to applicable intellectual property law and are the property of Triton International Limited and its subsidiaries: Triton® and TAL®.



CLASSIFICATION

Lease

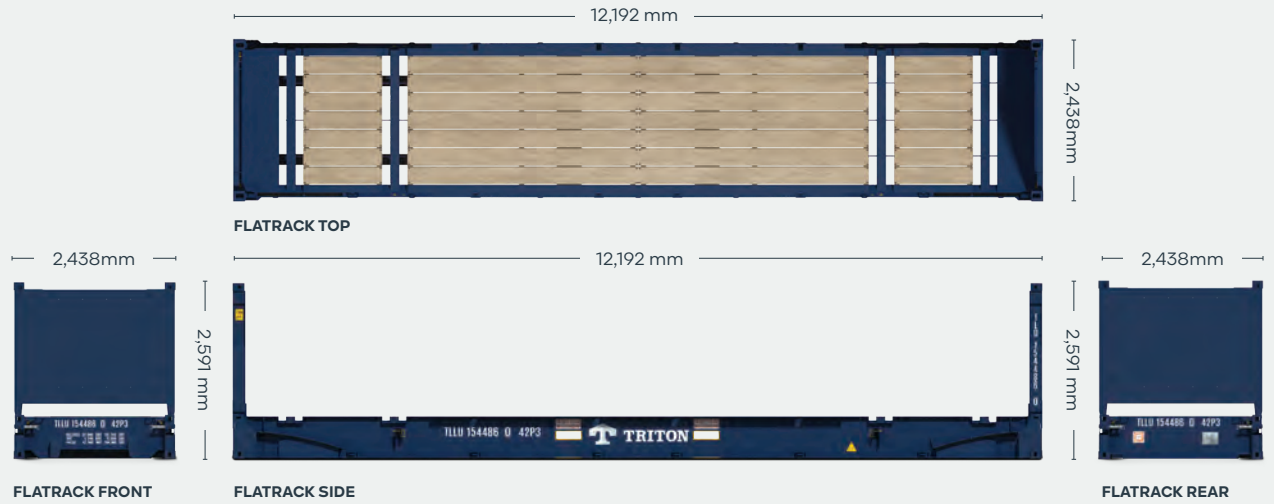
Available via Triton's global network of supply locations.

40ft Flush Folding Flatracks



FEATURES

- Built to carry heavy or oversized cargoes
- Great for specialized shipments of steel, pipes, drums and machinery
- Forklift pockets for easy empty handling
- Heavy duty steel frames and thick plank floors and lashing rings all around
- With flush folding end frames to allow for efficient stacking and repositioning
- Triton's industry leading new production testing and inspection criteria ensures the highest quality container
- Available in the high demand hub ports
- Backed up by Triton's global network of supply locations and dedicated leasing and support teams
- Flexible lease terms to meet your company needs



DIMENSIONS (METRIC/IMPERIAL)

EXTERNAL DIMENSIONS

Length (Base bottom casting)	12,192 mm	40' 0.0"
Width (Base bottom casting)	2,438 mm	8' 0.0"
Height (End frame up)	2,591 mm	8' 6.0"
Height (End frame down)	648 mm	2' 1.5"

INTERNAL DIMENSIONS

Length (Between end panels)	12,182 mm	39' 11.6"
Width (Over bottom side rail)	2,374 mm	7' 9.5"
Height (Side rail to top castings)	1,959 mm	6' 5.1"

CAPACITY & WEIGHTS

Max Gross	52,500 kg	115,740 lbs
Payload	47,260 kg	104,190 lbs
Tare	5,240 kg	11,550 lbs

NOTE: The dimensions of containers correspond to ISO standards.

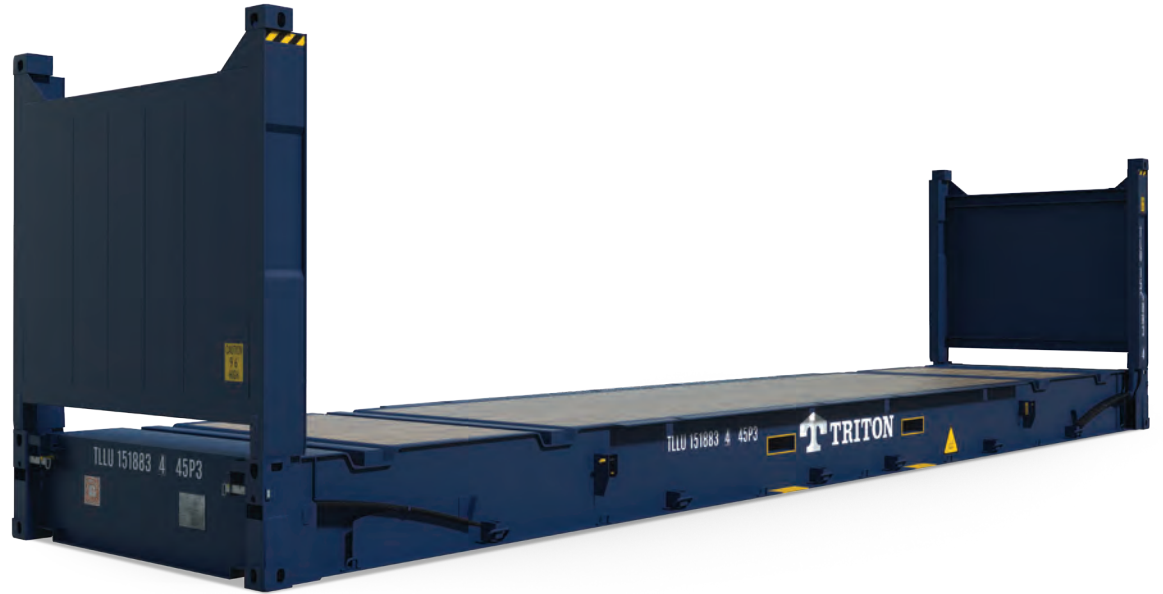
However, due to production tolerances, a difference in measurement is possible.

DISCLAIMER: Every effort is made to ensure this information is accurate, however Triton does not assume any liability for the accuracy of the information and content provided in marketing or information materials, or for the consequences resulting from using the information and content provided. Triton does not guarantee or claim that said information and content is exhaustive. Claims as to the exhaustive nature of said information and content are excluded. The information and content is only provided for advertising purposes and is non-binding. No explicit or implied warranties or guarantees are made. The container displayed only represents a sample of the entire fleet.

The following items are registered or unregistered service marks in the United States and/or foreign jurisdictions pursuant to applicable intellectual property law and are the property of Triton International Limited and its subsidiaries: Triton® and TAL®.



40ft High Cube Flush Folding Flatracks



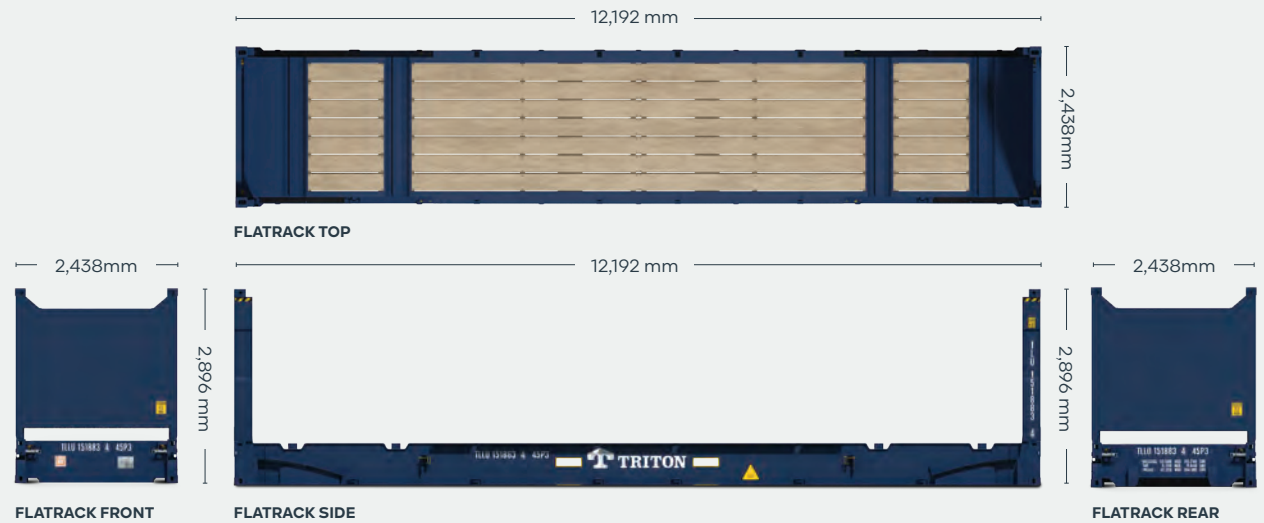
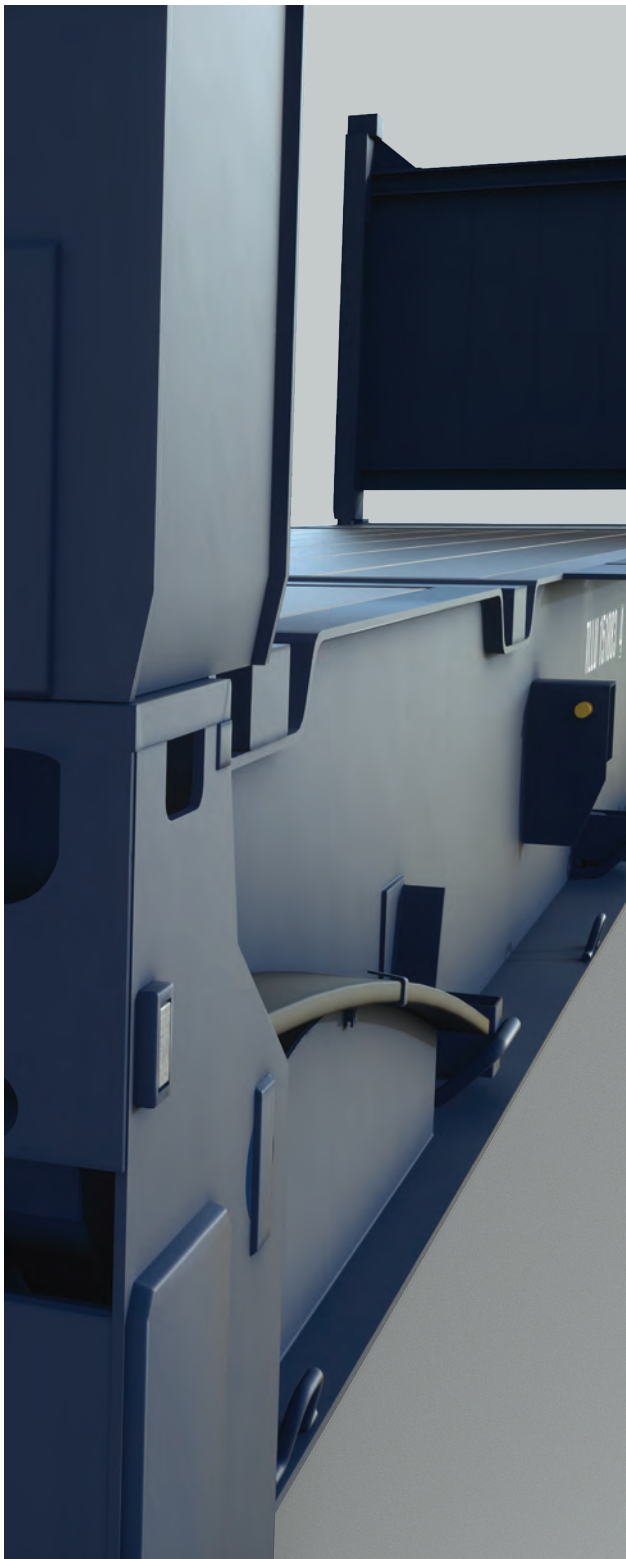
CLASSIFICATION

Lease

Available via Triton's global network of supply locations.

FEATURES

- Additional height provides extra capacity for your goods
- Built to carry heavy or out of gauge cargoes
- Heavy duty steel frames and thick plank floors
- Great for specialized shipments of steel, pipes, drums and machinery
- With flush folding end frames to allow for efficient stacking
- Triton's industry leading new production testing and inspection criteria ensures the highest quality container
- Backed up by Triton's global network of supply locations and dedicated leasing and support teams
- Flexible lease terms to meet your company needs



DIMENSIONS (METRIC/IMPERIAL)

EXTERNAL DIMENSIONS

Length (Base bottom casting)	12,192 mm	40' 0.0"
Width (Base bottom casting)	2,438 mm	8' 0.0"
Height (End frame up)	2,896 mm	9' 6.0"
Height (End frame down)	648 mm	2' 1.5"

INTERNAL DIMENSIONS

Length (Between end panels)	12,182 mm	39' 11.6"
Width (Over bottom side rail)	2,374 mm	7' 9.5"
Height (Side rail to top castings)	2,264 mm	7' 5.1"

CAPACITY & WEIGHTS

Max Gross	52,500 kg	115,740 lbs
Payload	47,220 kg	104,100 lbs
Tare	5,280 kg	11,640 lbs

NOTE: The dimensions of containers correspond to ISO standards.

However, due to production tolerances, a difference in measurement is possible.

DISCLAIMER: Every effort is made to ensure this information is accurate, however Triton does not assume any liability for the accuracy of the information and content provided in marketing or information materials, or for the consequences resulting from using the information and content provided. Triton does not guarantee or claim that said information and content is exhaustive. Claims as to the exhaustive nature of said information and content are excluded. The information and content is only provided for advertising purposes and is non-binding. No explicit or implied warranties or guarantees are made. The container displayed only represents a sample of the entire fleet.

The following items are registered or unregistered service marks in the United States and/or foreign jurisdictions pursuant to applicable intellectual property law and are the property of Triton International Limited and its subsidiaries: Triton® and TAL®.



CLASSIFICATION

For Sale: Used

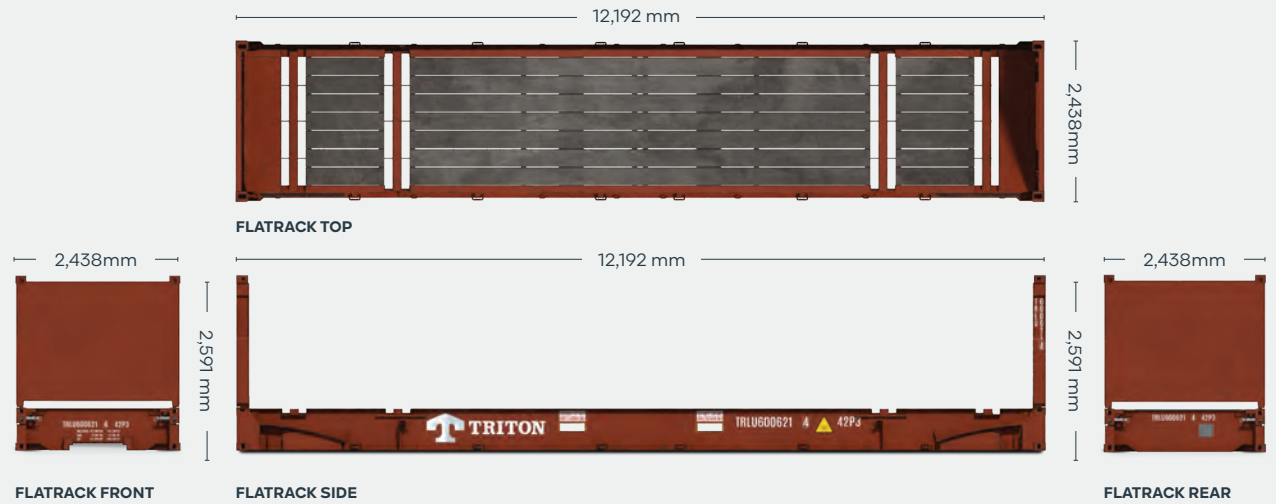
Available via Triton's global network of supply locations.

40ft Used Flush Folding Flatracks



FEATURES

- Built to carry heavy or out of gauge cargoes
- Heavy duty steel frames and thick plank floors
- Backed up by Triton's global network of supply locations and dedicated sales and support teams
- Great for specialized shipments of coiled steel, drums and machinery
- Many with flush folding end frames to allow for efficient stacking
- Available globally



DIMENSIONS (METRIC/IMPERIAL)

EXTERNAL DIMENSIONS

Length (Base bottom casting)	12,192 mm	40' 0.0"
Width (Base bottom casting)	2,438 mm	8' 0.0"
Height (End frame up)	2,591 mm	8' 6.0"
Height (End frame down)	648 mm	2' 1.5"

INTERNAL DIMENSIONS

Length (Between end panels)	12,182 mm	39' 11.6"
Width (Over bottom side rail)	2,374 mm	7' 9.5"
Height (Side rail to top castings)	1,959 mm	6' 5.1"

CAPACITY & WEIGHTS

Max Gross	45,000, 50,000 or 52,500kg 99,210, 110,230 or 115,740 lbs
Payload	39,200 – 47,520kg 86,421 – 104,764 lbs
Tare	4,780 kg – 5,800 kg 10,538 lbs – 12,787 lbs

NOTE: The dimensions of containers correspond to ISO standards.

However, due to production tolerances, a difference in measurement is possible.

DISCLAIMER: Every effort is made to ensure this information is accurate, however Triton does not assume any liability for the accuracy of the information and content provided in marketing or information materials, or for the consequences resulting from using the information and content provided. Triton does not guarantee or claim that said information and content is exhaustive. Claims as to the exhaustive nature of said information and content are excluded. The information and content is only provided for advertising purposes and is non-binding. No explicit or implied warranties or guarantees are made. The container displayed only represents a sample of the entire fleet.

The following items are registered or unregistered service marks in the United States and/or foreign jurisdictions pursuant to applicable intellectual property law and are the property of Triton International Limited and its subsidiaries: Triton® and TAL®.

HERE. THERE. EVERYWHERE

We supply the world

Triton is the largest lessor of intermodal containers in the world with over 7 million TEU of containers. Our services are available in 89 countries around the globe. So, no matter where you need containers, we'll have them nearby. To find your nearest Triton Container Sales manager visit www.tritoncontainer.com.



**Global inventory of
cargoworthy containers
for lease and sale.**



**Unrivaled container
supply at competitive
prices.**



**Outstanding and
highly responsive
customer services.**



**Global network of 20 offices
and 3 independent agencies
across 16 countries.**



**Equipment
built to the
highest quality.**



**Our size, strength and reliability
make us the go-to supplier of
intermodal shipping containers.**



TRITON

We're the biggest for a reason, contact our friendly experts and experience Triton's world-leading service and cost savings today. Imagine what we can do together.

www.tritoncontainer.com